

3D GRAPHIC ACCELERATION

PRO-PILOT '99

THE COMPLETE FLIGHT SIMULATOR

Quick Reference

Controls Quick Reference

Keyboard - Aircraft Controls

Flight Controls

Ailerons

Left	KEYPAD 4
Center	KEYPAD 5
Right	KEYPAD 6

Note: Aileron trim is available only on the King Air and the CitationJet.

Trim left	ALT + KEYPAD 4
Trim right	ALT + KEYPAD 6

Elevator

Nose up	KEYPAD 2
Nose down	KEYPAD 8
Trim up	KEYPAD 1
Trim down	KEYPAD 7

Rudder

Left	,
Center	L
Right	.

Note: Rudder trim is available only on the Baron, King Air and the CitationJet.

Trim left	ALT + ,
Trim right	ALT + .

Auto Coordination

Toggle auto-coordination on/off /

Flaps

Extend (one stage) KEYPAD +
Retract (one stage) KEYPAD -

Speed Brakes (CitationJet Only)

Toggle speed brakes: 7
deploy (up)/ retract (down)

Power Controls

Note: ALT key combinations are used for the right controls of the multiengine aircraft, unless synchronize multiengine controls is enabled.

Throttle / Power / Thrust Levers

Increase (single, left) =, or KEYPAD 9
Decrease (single, left) -, or KEYPAD 3
Cut (single, left) 0
Full (single, left) \, or BACKSPACE
Increase (right) ALT + =, or ALT + KEYPAD 9
Decrease (right) ALT + -, or ALT + KEYPAD 3
Cut (right) ALT + 0
Full (right) ALT + \, or ALT + BACKSPACE

Propeller Levers (Bonanza, Baron, and King Air Only)

Increase pitch (single, left) KEYPAD INS
Decrease pitch (single, left) KEYPAD DEL
Increase pitch (right) ALT + KEYPAD INS
Decrease pitch (right) ALT + KEYPAD DEL

Propeller/Thrust Reversing (King Air Only)

Reverse thrust (from idle, left) \
Reverse thrust (from idle, right) ALT + \

Propeller Synchronization (Baron and King Air Only)

Toggle prop synchron on/off 7

Fuel Mixture Levers (Skyhawk, Bonanza, and Baron Only)

Enrich (single, left) ALT + KEYPAD *
Lean (single, left) KEYPAD /
Enrich (right) KEYPAD *
Lean (right) ALT + KEYPAD /

Condition Levers (King Air Only)

Cycle condition lever (left): KEYPAD *
FUEL CUT-OFF/LOW IDLE/HIGH IDLE
Cycle condition lever (right): ALT + KEYPAD *
FUEL CUT-OFF/LOW IDLE/HIGH IDLE

Note: Use / and ALT + / to cycle levers in opposite direction.

Carburetor Heat (172P Only)

Toggle carburetor heat on/off H

Keyboard - Aircraft Controls/Navigation Controls

Engine Controls

Note: ALT key combinations are used for the right controls of the multiengine aircraft, unless synchronize multiengine controls is enabled.

Battery/Alternator Switch

Toggle Battery/Alternator switch on/off Z

Ignition Switch (Skyhawk, Bonanza, and Baron Only)

Off O

Right magneto W

Left magneto Q

Both magnetos E

Start S

Off (right engine) ALT + O

Right magneto (right engine) ALT + Q

Left magneto (right engine) ALT + W

Both magnetos (right engine) ALT + E

Start (right engine) ALT + S

Engine Start (King Air and CitationJet Only)

Off (left) O

Start (left) S

Off (right) ALT + O

Start (right) ALT + S

Fuel Selector

Cycle fuel switch: F

(OFF/LEFT/BOTH/RIGHT for Skyhawk)

(OFF/LEFT/RIGHT for Bonanza)

(OFF/ON/CROSSFEED for Baron, King Air, and CitationJet)

Cycle fuel switch (right engine): ALT + F

OFF/ON/CROSSFEED

Switches

Avionics Switch

Toggle avionics switch on/off X

Pitot Heat

Toggle pitot heat on/off 1

Lights

Toggle strobe light on/off 2

Toggle beacon light on/off 3

Toggle NAV light on/off 4

Toggle taxi light on/off 5

Toggle landing light on/off 6

Fuel Pump (172R only)

Toggle fuel pump on/off 8

Fuel Boost (Baron and CitationJet)

Toggle fuel boost (left) on/off 8

Toggle fuel boost (right) on/off 9

Note: Key will control both switches, unless engine controls are un-linked.

Standby Pumps (King Air only)

Toggle standby pumps (left) on/off 8

Toggle standby pumps (right) on/off 9

Note: Key will control both switches, unless engine controls are un-linked.

Autopilot

Autopilot

Toggle autopilot engage on/off SHIFT + C

Trim control up SHIFT + A

Trim control down SHIFT + Q

Cycle heading modes: SHIFT + X

HDG/NAV1/APR/BC

Toggle ALT hold on/off SHIFT + Z

Miscellaneous

Landing Gear Lever (Bonanza, Baron, King Air and CitationJet Only)

Toggle gear up/down G

Cowl Flaps (Bonanza and Baron Only)

Toggle cowl flaps open/close C

Brakes

Apply brakes (both) B

Apply brakes (left) N

Apply brakes (right) M

Toggle brakes (both) on/off CTRL + B

Toggle parking brakes on/off ALT + P

Joystick Control

Enable joystick control ALT + J

Keyboard Control

Enable keyboard control ALT + K

Synchronize Multiengine Controls (Baron, King Air, and CitationJet Only)

Toggle link/unlink multiengine controls ALT + L

Navigation Controls

Select NAV Gauge

Select NAV 1 SHIFT + 1

Select NAV 2 SHIFT + 2

Select DME SHIFT + 3

Keyboard - Miscellaneous Controls/Menu Hotkeys

Tower Camera

Toggle tower camera view SHIFT + F7

GPS Map Display

Toggle GPS map display on/off F8

Zoom in map display SHIFT + KEYPAD -

Zoom out map display SHIFT + KEYPAD +

Graphics Detail

Toggle graphics detail: F9

Main/alternate

Miscellaneous Controls

Altimeter

Decrease setting SHIFT + ,

Increase setting SHIFT + .

Clock

Toggle clock to elapsed timer SHIFT + T

Cycle elapsed timer: SHIFT + E

Reset and Start / Stop

Magnetic Compass

Toggle magnetic compass display ALT + M

Instrument Options

Digital instrument readout ALT + R

Note: Panel gauge swap is available only on the Baron.

Swap engine gauges TAB

Note: TAT temperature units is available only on the CitationJet.

Toggle temperature units T

Time Acceleration

Accelerate time ALT + KEYPAD +

Decelerate time ALT + KEYPAD -

Pause

Toggle pause simulation on/off P

Position Freeze

Toggle position freeze on/off SHIFT + F

Slew Mode

Toggle slew mode on/off ALT + X

Move forward / backward KEYPAD 8 / KEYPAD 2

Move left / right KEYPAD 4 / KEYPAD 6

Move up / down Q / A

Pitch up / down - / +

Bank left / right KEYPAD 7 / KEYPAD 9

Yaw left / right KEYPAD 1 / KEYPAD 3

Stop all motion KEYPAD 5

Reset pitch / bank / heading to 0 SPACEBAR

Display Brightness (Gamma)

Increase SHIFT + G

Decrease SHIFT + CTRL + G

Runway Lighting Intensity

Cycle runway lighting brightness ALT + B

Repair Aircraft

Repair aircraft damage ESC

Other Menu Hotkeys

Pilot-in-command

Resume pilot-in-command mode F2

Restart

Restart most currently loaded flight ALT + F2

Exit

Exit ProPilot ALT + F4

Pilot's Operating Handbook

Toggle POH on/off F3

Position Aircraft

Aircraft position map F4

ATC Communication

ATC communication options SHIFT + F4

Toggle "auto taxi to departure runway" option ALT + ~

Weather Briefing

Weather briefing for current flight plan F5

Flight Log

Flight log for current flight plan F6

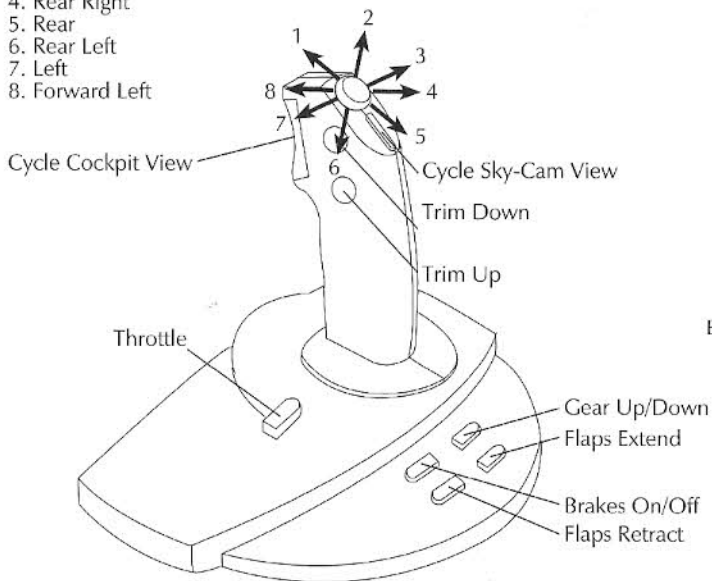
Save Flight

Save current flight SHIFT + F6

Joysticks - Microsoft® Sidewinder™ 3D Pro/Microsoft® Sidewinder™ Force Feedback

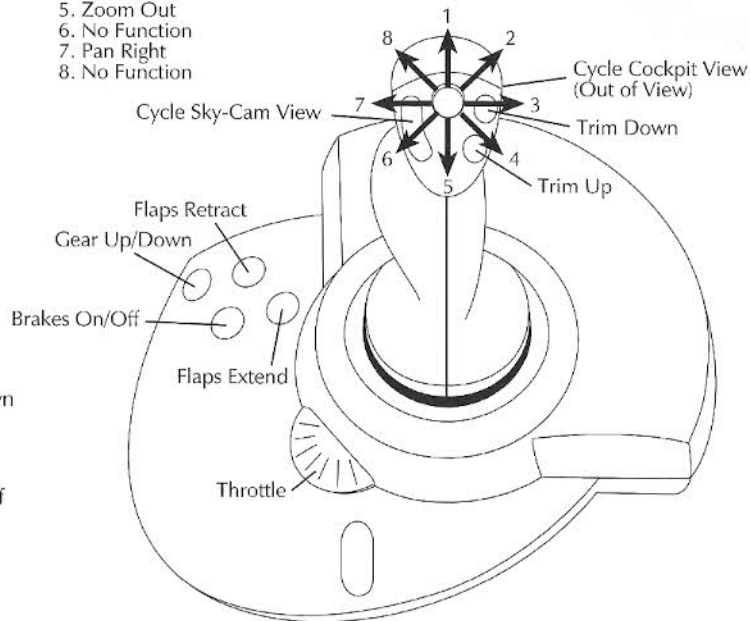
Cockpit View Directions:

1. Forward
2. Forward Right
3. Right
4. Rear Right
5. Rear
6. Rear Left
7. Left
8. Forward Left



Outside Cameras:

1. Zoom In
2. Pan Up (or SHIFT + Hat Up)
3. Pan Right
4. Pan Down (or SHIFT + Hat Down)
5. Zoom Out
6. No Function
7. Pan Right
8. No Function



Radio Stack/GPS

Distance Measuring Equipment

1. Nautical Miles to Station Display
2. Groundspeed Display
3. Minutes to Station Display

4. NAV1 Switch
5. Hold Switch
6. NAV2 Switch

Audio Panel

7. Marker Lights; Outer, Middle, Inner
8. COM Switches
9. NAV Switches

10. Distance Measuring Equipment Switch
11. Marker Switch
12. Automatic Direction Finder Switch

COMM1 Radio

13. Frequency Display and Standby Frequency
14. Frequency Transfer Switch

NAV1 Radio

15. Frequency Display and Standby Frequency
16. Frequency Transfer Switch
17. Identify Switch
18. Bearing Switch

COMM2 Radio

19. Frequency Display and Standby Frequency
20. Frequency Transfer Switch

NAV2 Radio

21. Frequency Display and Standby Frequency
22. Frequency Transfer Switch
23. Identify Switch
24. Bearing Switch

Automatic Direction Finder

25. Frequency Display and Standby Frequency
26. Frequency Transfer Switch
27. Identify Switch

Transponder

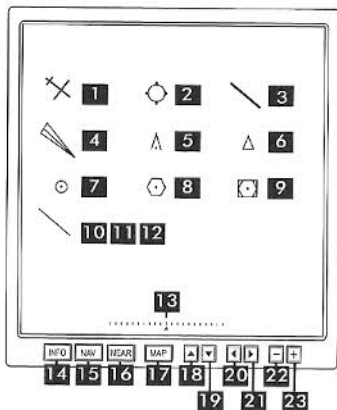
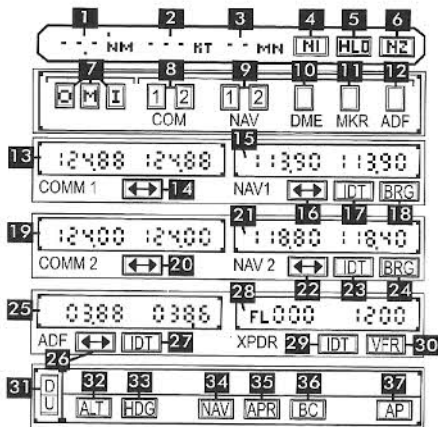
28. Flight Level and Squawk Display
29. Identify Switch
30. Squawk VFR Switch

Autopilot

31. Trim Rocker Switch
32. Altitude Switch
33. Heading Switch
34. NAV Switch
35. Approach Switch
36. Back Course Switch
37. Master Switch

GPS Unit

1. Airplane
2. Airport
3. Runway (Light Gray)
4. ILS
5. Obstacle
6. Intersection
7. NDB
8. VOR
9. VOR-DME
10. CDI (White)
11. Track Line (Yellow)
12. Victor Route (Lt. Blue)
13. CDI (Flight Plan Only)
14. Info Mode Button
15. Nav Mode Button
16. Near Mode Button
17. Map Button (toggles between Menu and Display Modes)
18. Up (Menu Choice Selection)
19. Down (Menu Choice Selection)
20. Left (Cycles Through Menus)
21. Right (Cycles Through Menus)
22. Zoom Out
23. Zoom In



Instruments Quick Reference

Cessna Skyhawk 172P

Instrument Panel

1. Airspeed Indicator
2. Attitude Indicator (AI)
3. Altimeter
4. VOR/LOC Indicator
5. Turn Coordinator and Inclinometer
6. Heading Indicator (HI)
7. Vertical Speed Indicator (VSI)
8. Automatic Direction Finder (ADF) (ALT+N toggles 2nd VOR/LOC in place of the ADF)
9. Fuel Tank Selector Switch
10. Ignition Switch
11. Battery/Alternator Switch
12. Avionics Power Switch
13. Pitot Heat Switch
14. External Light Switches; Strobe, Beacon, Navigation, Taxi, and Landing
15. Carburetor Heat Lever
16. Throttle Lever
17. Fuel Mixture Lever
18. Pitch Trim Wheel
19. Flaps Lever

20. Oil Temperature Gauge
21. Oil Pressure Gauge
22. Tachometer (RPM)
23. Fuel Gauges
24. Clock

25. Radio Stack (see Radio Stack/GPS diagram)

26. Magnetic Compass

