



System requirements:



IBM Display or TV



IBM PCjr
128KB of memory

© 1983
International Business
Machines Corporation
P.O. Box 1328-S
Boca Raton, Florida 33432

1502316
Printed in USA

Mine Shaft

Entertainment Series



IBM
IBM Software
for IBM Personal
Computers

Danger! Floodwaters have short-circuited your robot miners ...and now they're running berserk, threatening to collide with your mining car. How can you retrieve your fortune in gems... without being destroyed?

LIMITED WARRANTY

International Business Machines Corporation warrants this IBM Personal Computer Product including the medium upon which a copyrighted Program is stored to be in good working order for a period of one year from the date of purchase from IBM or an authorized IBM Personal Computer dealer. Should this Product fail to be in good working order at any time during this one-year warranty period, IBM will, at its option, repair or replace this Product at no additional charge except as set forth below. Repair parts and replacement Products will be furnished on an exchange basis and will be either reconditioned or new. All replaced parts and Products become the property of IBM. This limited warranty does not include service to repair damage to the Product resulting from accident, disaster, misuse, abuse, or non-IBM modification of the Product.

THE PROGRAM WHICH IS STORED ON A MEDIUM WITHIN THIS PRODUCT IS PROVIDED "AS IS" WITHOUT WARRANTY OF ANY KIND, EITHER EXPRESS OR IMPLIED, INCLUDING, BUT NOT LIMITED TO, THE IMPLIED WARRANTIES OF MERCHANTABILITY AND FITNESS FOR A PARTICULAR PURPOSE. THE ENTIRE RISK AS TO THE QUALITY AND PERFORMANCE OF THE PROGRAM IS WITH YOU. SHOULD THE PROGRAM PROVE DEFECTIVE, YOU (AND NOT IBM OR AN AUTHORIZED IBM PERSONAL COMPUTER DEALER) ASSUME THE ENTIRE COST OF CORRECTION. IBM does not warrant that the functions contained in the Program will meet your requirements or that the operation of the Program will be error free.

Limited Warranty service may be obtained by delivering the Product during the one-year warranty period to an authorized IBM Personal Computer dealer or IBM Service Center and providing proof of purchase date. If this Product is delivered by mail, you agree to insure the Product or assume the risk of loss or damage in transit, to prepay shipping charges to the warranty service location and to use the original shipping container or equivalent. Contact an authorized IBM Personal Computer dealer or write to IBM Personal Computer, Sales and Service, P.O. Box 1328-W, Boca Raton, Florida 33432, for further information.

ALL EXPRESS OR IMPLIED WARRANTIES FOR THIS PRODUCT, EXCEPT THE PROGRAM, INCLUDING THE WARRANTIES OF MERCHANTABILITY AND FITNESS FOR A PARTICULAR PURPOSE, ARE LIMITED IN DURATION TO A PERIOD OF ONE YEAR FROM THE DATE OF PURCHASE, AND NO WARRANTIES, WHETHER EXPRESS OR IMPLIED, WILL APPLY AFTER THIS PERIOD. SOME STATES DO NOT ALLOW LIMITATIONS ON HOW LONG AN IMPLIED WARRANTY LASTS, SO THE ABOVE LIMITATIONS MAY NOT APPLY TO YOU.

IF THIS PRODUCT, EXCEPT THE PROGRAM, IS NOT IN GOOD WORKING ORDER AS WARRANTED ABOVE, YOUR SOLE REMEDY SHALL BE REPAIR OR REPLACEMENT AS PROVIDED ABOVE. IN NO EVENT WILL IBM BE LIABLE TO YOU FOR ANY DAMAGES, INCLUDING ANY LOST PROFITS, LOST SAVINGS OR OTHER INCIDENTAL OR CONSEQUENTIAL DAMAGES ARISING OUT OF THE USE OF OR INABILITY TO USE SUCH PRODUCT, EVEN IF IBM OR AN AUTHORIZED IBM PERSONAL COMPUTER DEALER HAS BEEN ADVISED OF THE POSSIBILITY OF SUCH DAMAGES, OR FOR ANY CLAIM BY ANY OTHER PARTY.

SOME STATES DO NOT ALLOW THE EXCLUSION OR LIMITATION OF INCIDENTAL OR CONSEQUENTIAL DAMAGES OR IMPLIED WARRANTIES FOR CONSUMER PRODUCTS, SO THE ABOVE LIMITATIONS OR EXCLUSIONS MAY NOT APPLY TO YOU.

This warranty gives you specific legal rights, and you may also have other rights which may vary from state to state.



*Personal Computer
Entertainment Series*

Mine Shaft

by Sierra On-Line, Inc.

First Edition (August 1983)

This product could include technical inaccuracies or typographical errors. Changes are periodically made to the information herein; these changes will be incorporated in new editions of the publication.

The following paragraph applies only to the United States and Puerto Rico: International Business Machines Corporation provides this manual "as is," without warranty of any kind, either expressed or implied, including, but not limited to, the particular purpose. IBM may make improvements and/or changes in the product(s) and/or the program(s) described in this manual at any time.

Products are not stocked at the address below. Requests for copies of this product and for technical information about the system should be made to your authorized IBM Personal Computer dealer.

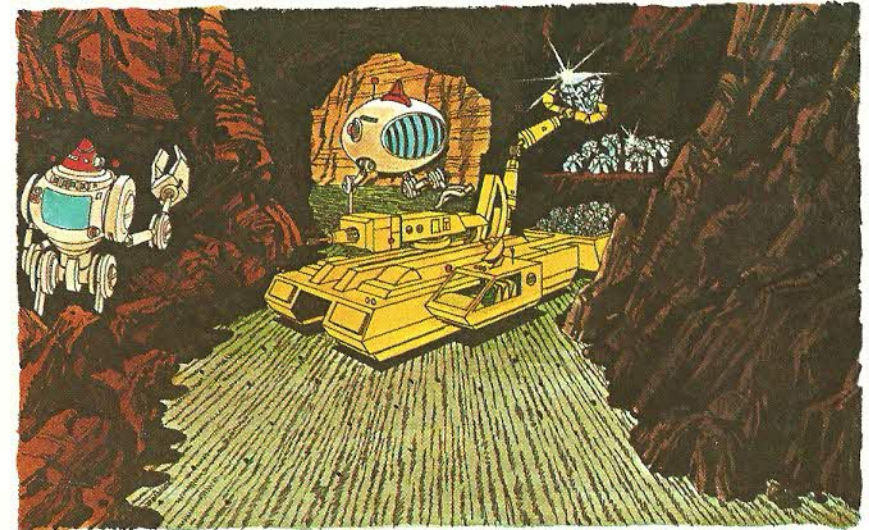
A Reader's Comment Form is provided at the back of this publication. If the form has been removed, address comments to: IBM Corp., Personal Computer, P.O. Box 1328-C, Boca Raton, Florida 33432. IBM may use or distribute any of the information you supply in any way it believes appropriate without incurring any obligations whatever.

© Copyright International Business Machines Corporation 1983

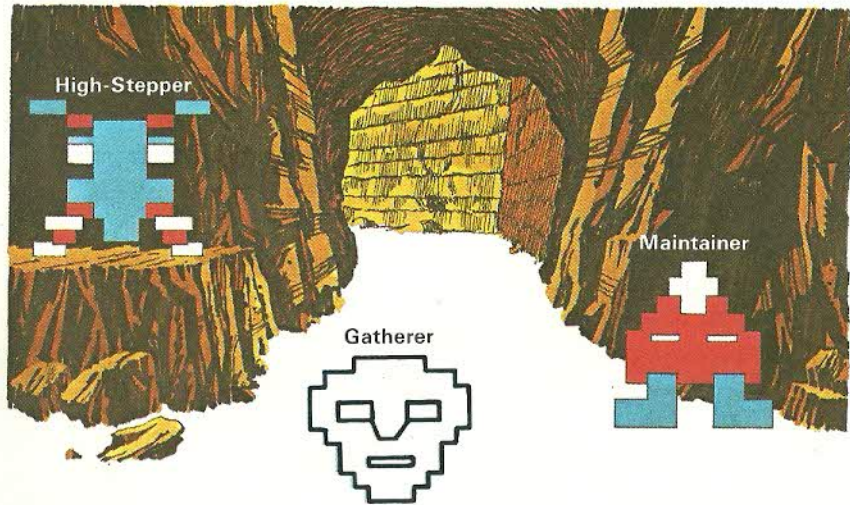
Mine Shaft

About the Game

Trouble! This mine has been nothing but trouble! Ever since your mining car drilled into that underground stream, everything seems to have gone wrong. Your team of robot miners, which were once untiring, dependable workers, have been short-circuited by the floodwaters. The "Gatherers," the first robots to be damaged, were clearing the debris left in front of your laser-equipped mining car when the flood began. The "Maintainers," automated service and repair robots, arrived promptly only to become the next victims. The floodwaters rose to such a high level that even the long-legged "High-Steppers," whose purpose is to reach out-of-the-way places, were short-circuited.



Now that the mine seems dry again, you decide to venture back in to retrieve the lost fortune in gems. As you enter the mine, you see it is not safe. The short-circuited robots are running around aimlessly and may very well collide with your mining car. The High-Steppers and Maintainers are easily disabled using the laser drill mounted on the front of your mining car. The Gatherers, however, remain a problem. Designed to work in front of the laser, the Gatherers are made of a special metal, and cannot be disabled.



The object of Mine Shaft is to score points by collecting gems and disabling robots in each level of the mine. Each time you collect all of the gems or disable all of the robots in a given level, a door appears on the screen. You then can enter to the next level. For a maximum score, you may remain at any one level until all gems are collected and all robots are disabled before entering through the door to the next level. You cannot reenter any level that you have exited, so you may want to score as many points as possible in each level.

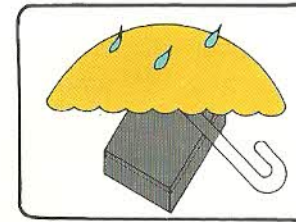
Getting Started

How to Center a Joystick

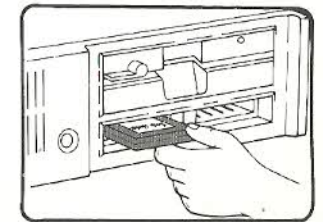
When using joystick control, refer to the testing section of your IBM PCjr *Guide to Operations* to center the joystick.

How to Handle Cartridges

DO

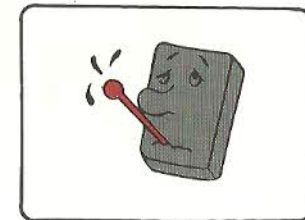


Keep them dry



Insert them with the label side up

DON'T



Don't get them too hot

