



# HALF-LIFE

B L U E S H I F T



gearbox  
software

SIERRA  
STUDIOS

VALVE



# HALF-LIFE®

Thank you for purchasing **Half-Life: Blue Shift**.

This title contains the following:

**Half-Life: Blue Shift** - An all-new episode in the Half-Life saga where players take on the role of Black Mesa security guard Barney Calhoun.

**Half-Life: Opposing Force** - This 2000 Academy of Interactive Arts and Sciences PC Action Game of the Year is a complete Half-Life adventure where players take on the role of Corporal Adrian Shephard.

**OpFor: On-Line** - A robust collection of multiplayer game modes including Team Play, Deathmatch and Capture the Flag featuring levels created by the most renowned designers in the game industry - including the Levelord.

**Half-Life HD Pack** - Enhance all three Half-Life episodes (Half-Life, Opposing Force and Blue Shift) with High Definition content that brings Half-Life to the next generation in graphics quality.

*The Half-Life HD Pack is recommended only for PC's with a Intel Pentium III or AMD Athlon processor, 64 MB ram and a TNT, Voodoo 3, GeForce or similar 3d video accelerator).*

# BLUE SHIFT

## CONTENTS

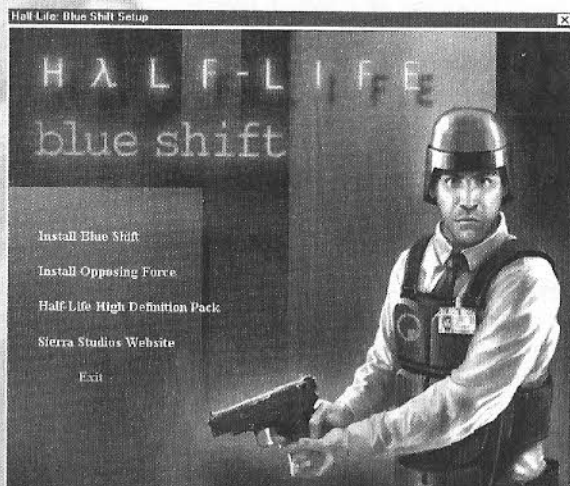
Getting Started	4
The Main Menu Screens	5
Main Menu Options	6
Hazard Course and Boot Camp	6
Configuration	6
Controls	6
Load Game / Save Game	8
Controlling the Action	9
On-Screen Information	11
Blue Shift	13
Opposing Force	19
Multiplayer	24
Deathmatch	25
Half-Life: Opposing Force CTF	26
Credits	28
Contact Information	30

# HALF-LIFE®

## GETTING STARTED

### Installation

Insert the game CD into your CD-ROM drive. If your CD-ROM drive has AutoPlay enabled, the Blue Shift installation menu will appear once your computer has had a moment to examine the contents of the CD.



If AutoPlay is not enabled on your computer, double-click the "My Computer" icon on your desktop. Double-click the CD-ROM drive icon. If the Blue Shift installation menu does not appear, double-click "autorun.exe" (found on the Blue Shift CD).

Follow the on-screen instructions to install Blue Shift, Opposing Force or the Half-Life HD Pack (High Definition content for all Half-Life games).

(NOTE: Half-Life HD Pack only supports Half-Life, Half-Life: Opposing Force and Half-Life: Blue Shift. It does not support Team Fortress or Counter Strike.)

### Minimum System Requirements

Windows 95, Windows 98, Windows Me, Windows 2000 or Windows NT(with service pack 4)  
Intel Pentium 233 or AMD K6-2  
32 MB ram  
400 MB HD  
2x CD-Rom drive  
SVGA, high-color (16-bit)  
Win-compatible sound card  
32-bit Internet service provider with 28.8+ modem or LAN (for multiplayer modes)

### Recommended System Requirements (For Half-Life HD Pack)

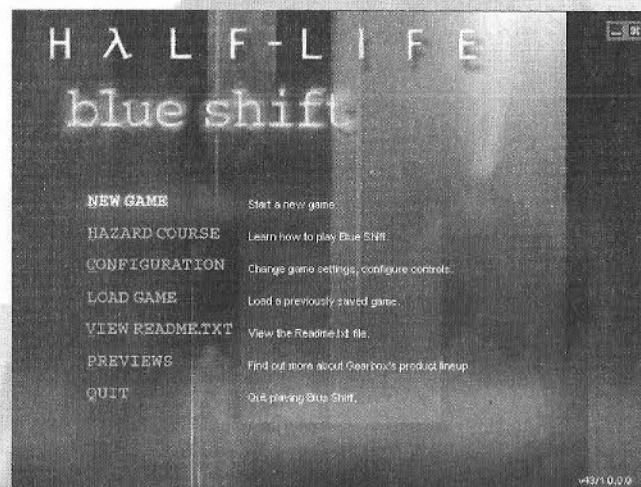
Intel Pentium III or AMD Athlon  
64 MB ram  
3D video card (OpenGL or Direct 3D)

# BLUE SHIFT

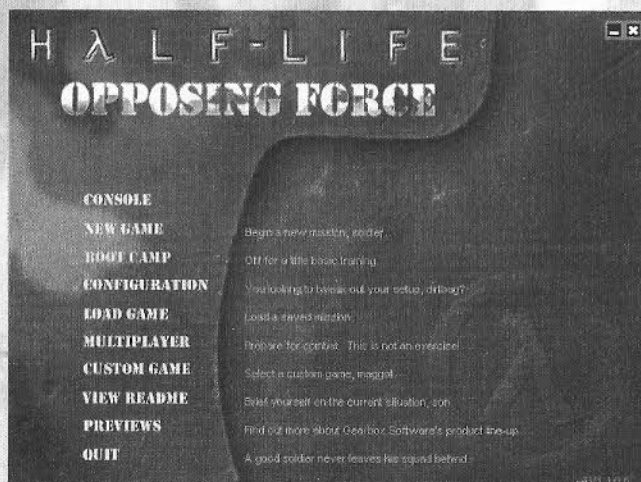
## The Main Menus

The Main Menu in Blue Shift or Opposing Force can be accessed at any time during a game by hitting the Escape Key. Use your mouse or the Up and Down arrow keys to highlight options and click or press the Enter key to activate the option. Hit the Escape key at any time to go to the previous screen.

This is the main menu for Blue Shift



This is the main menu for Opposing Force





# HALF-LIFE®

## *Resume Game*

If you are in the middle of a game of Blue Shift or Opposing Force when you bring up the menu, you'll have the option to Resume Game to return you to the action.

## *New Game*

When you start a new game, you'll be asked to choose a skill level

**Easy** - Enemies are weak and are easy to kill

**Medium** - Enemies do more damage, but are easy to kill

**Hard** - Enemies do a lot of damage and are difficult to kill

## *Hazard Course (Blue Shift) or Boot Camp (Opposing Force)*

Access the Hazard Course or Boot Camp at any time to perfect maneuvers like jumping and crouching, using objects and firing weapons. These training areas offer target ranges and obstacle courses presented by a qualified guide who will teach you the skills specific to each game. If you are new to action games, we highly recommend that you visit the Hazard Course or Boot Camp before you begin a new game.

## *Configuration*

Set game options, optimize video and audio settings for your system and customize keyboard controls to your liking. After setting your configuration, click on the Done button to apply your settings and return to the Main Menu. Click the Use Defaults button to restore the original default settings.

## *Controls*

The grid shown in the Controls screen lists the default keyboard and mouse configuration. It also makes it easy to customize the configuration: just click on key/button in the second column, press Enter, then press the key you wish to associate with that key/button.

# BLUE SHIFT

## **Control Screen Descriptions**

**Action** - Describes the player action / interface option

**Key/Button** - Specifies the key or mouse control associated with that action

**Alternative** - If you want to make an action accessible by more than one key or button, select an alternate in the right-hand column.

See page 9 "Controlling the Action" section of this manual for a listing and description of the default mouse and keyboard configuration.

## **Advanced Controls**

The options found in the Advanced Controls menu allow you to use a crosshair or autoaiming, adjust mouse or joystick options and sensitivity. Descriptions of each option are printed in the menu.

## **Audio**

The Audio menu is used to adjust volume settings, sound quality, advanced audio support and CD music. To hear Half-Life's music, you must have the CD in your CD drive. To adjust the volume of CD music, use the Windows volume control tool.

## **Video**

Set video resolution, choose video drives and adjust brightness in the Video configuration menu. Blue Shift will check your system for the presence of OpenGL and Direct3D video drivers. It may ask you to verify the results of this check. If you have one or both drivers currently installed on your system, they will appear as choices at the top of this screen. You can also choose to run Blue Shift in software rendering mode. If you do not have 3d video drivers installed, Blue Shift will default to software rendering mode. It is highly recommended to only use 3d video drivers when using the Half-Life Upgrade Kit.

## **Content Control**

Use Content Control to disable graphically violent visuals. This is a password-protected feature designed to let parents control the level of violence in the game. Once enabled, you will need to re-enter your password to turn Content Control off.

## **Load Game / Save Game**

Choose and start a previously saved game. Or, if a game is already running, you can choose to save your game with this option.

## **Multiplayer**

Join a multiplayer game on the Internet, chat with other players, set up your own LAN game or customize your multiplayer game character. Multiplayer is only available with Opposing Force. For more information about Multiplayer options, see page 24.

## **View Readme.txt**

The readme.txt file contains basic information on system performance, product features and troubleshooting. It may also contain information about the game that has changed or was updated since this manual was printed. If you ever have difficulty with the game, it is highly recommended that you browse the readme.txt file.

## **Website**

Visit the Gearbox Software website for more information about this title or future titles in development. ([www.gearboxsoftware.com](http://www.gearboxsoftware.com))

## **Quit**

Exit the software. Don't forget to save your game before quitting.

## **Controlling The Action**

You may want to charge into a room and start shooting everything in sight. Sometimes we do too. But in this game, there are many other ways to interact with your surroundings. Half-Life: Blue Shift's environments are as realistic as possible and this level of realism will affect the way you move around. For instance, there's gravity - if you climb into the rafters and stand on weak ceiling tiles, don't be surprised if they collapse under your weight. There are also multiple surface effects - yes, wet floors really are slippery. And, if hit hard enough, glass will break. You can also shoot bullets into walls to leave marks that could be useful location reminders when lost.

Try experimenting with your environment. Use your wits as well as your weapons to outsmart opponents and navigate through tough spots.





# HALF-LIFE®

To make your experience as comfortable as possible, the interface is as customizable as you'd like to make it - so if you like, use the configuration menus to set up your controls as you'd like them. However, if you'd rather trust us to pick an appropriate configuration for you, here is a description of the basic default controls:

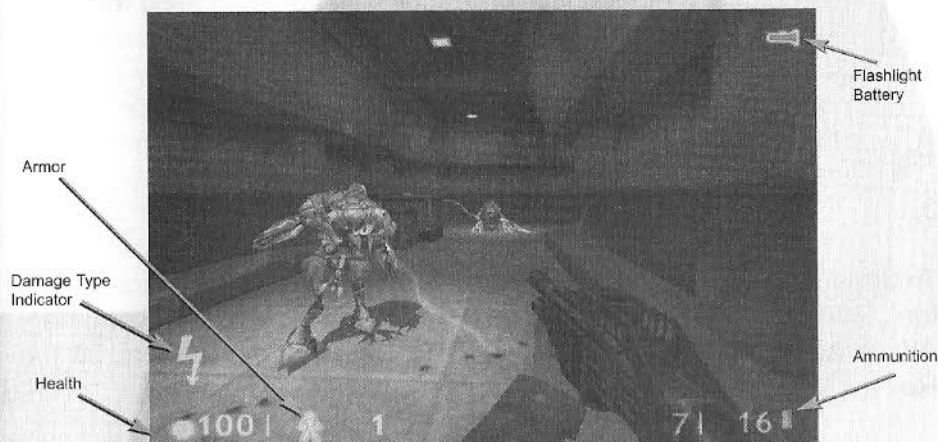
Move forward	<b>W</b>
Move backward	<b>S</b>
Move left (strafe)	<b>A</b>
Move right (strafe)	<b>D</b>
Walk / Run	<b>Shift</b>
Look left / right Look up / down	Push mouse left / right Push mouse up / down
Jump	<b>Space</b>
Duck	<b>Control</b>
Crawl	<b>Control</b> + Movement
Use	<b>E</b>
Flashlight	<b>F</b>
Show Score (Multiplayer only)	<b>Tab</b>
Select Weapon	# key (1-7)
Fire (Primary)	Left mouse button (Mouse 1)
Fire (Secondary)	Right mouse button (Mouse 2)
Reload	<b>R</b>
<p>The following key bindings are for Opposing Force CTF. These are default settings and the console commands. For a description of the functions please refer to "op4ctf_manual.htm" on your hard drive.</p>	
Throw Powerup	<b>P</b>
Change Team	<b>N</b>
Change Player Model	<b>B</b>
Flag Information	<b>I</b>

# BLUE SHIFT

## On-Screen Information

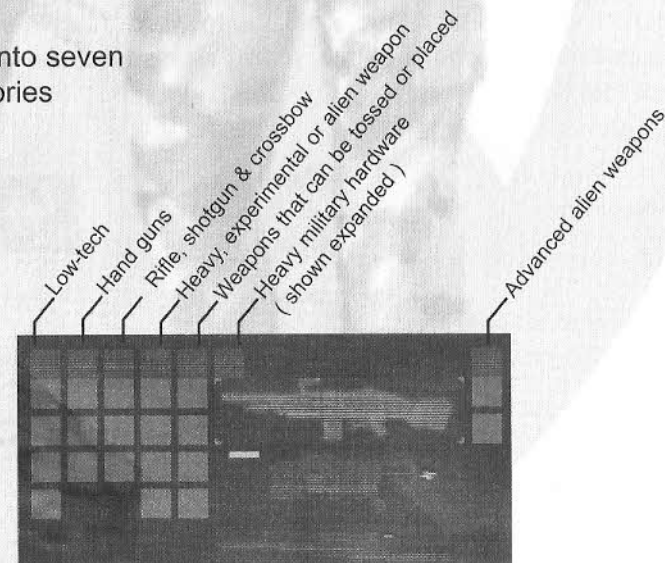
### The HUD

In Blue Shift, the HUD is available from the start of the game. In Opposing Force, the HUD appears once you've collected the PCV armor. In either case, the HUD is an on-going barometer of health, available energy and remaining ammunition. The HUD allows you to survey and select from your weapons arsenal and inventory items. It also alerts you when you are sustaining environmental damage.



### Weapon selection

Weapons fall into seven general categories



# HALF-LIFE®

As you discover weapons, they automatically get added to their proper categories. The categories correspond to keys 1-7 on your keyboard. You can switch weapons in several ways:

1. Toggle through all your available weapons by repeatedly hitting the Next Weapon ( ] ) or Previous Weapon ( [ ) keys. Hit the Enter key or press the Primary Attack button to select the highlighted weapon.
2. Jump directly to a specific weapon category by hitting the number key that corresponds to it. Then, counting down the column, hit the same category number again as many times as needed to match the position of the desired weapon. Hit the Enter key or press the Primary Attack button to choose the weapon.
3. Customize your keyboard configuration.

To fire your weapon, press the Primary Attack button (Left mouse button). To fire a weapon's secondary function, press the Secondary Attack button (Right mouse button). To reload your weapon, hit the Reload (R) key.

## ***Danger Monitors***

Your HUD has visual and audio alarms to warn you when the environment is threatening your health. If you see any of the following symbols, act fast:



Radiation



Cold



Electric Shock



Acid or corrosive chemical



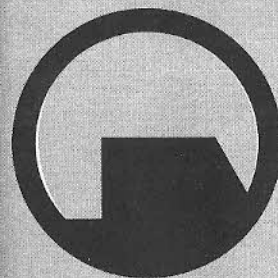
Fire



Poisonous Biohazard



Asphyxiation



## **BLACK MESA RESEARCH FACILITY**

Operating Duties for:

### **Security Guard**

***"Working to make a better tomorrow for all  
mankind."***

All materials contained in this document are confidential. This booklet must be returned to the Office of the Administrator upon termination or dismissal.



# Black Mesa Research Facility

## MEMORANDUM

OFFICE OF THE ADMINISTRATOR  
SUPPORT PERSONNEL DIVISION

TO: B. CALHOUN  
FROM: LM  
SUBJECT: BLUE SHIFT  
DATE: 05/09/200  
CC: DR. KLEINER

### REASSIGNMENT TO BLUE SHIFT

In accordance with section VII, item C of your contract, the Office of the Administrator has decided to reassign you to Blue Shift effective May 15.

Blue Shift assignment will require you to report to Black Mesa Personnel for processing of your salary increase and verification of your retinal scan before May 12. During processing, you will be immediately scheduled for a two-day training course that will prepare you for your assignment to the high security areas of the Anomalous Materials Laboratories.

On May 15, you must report to Sector C, Area 3 Medium Security Facilities by 0900. The section manager on duty will provide your assignments.

Please see the attached Security Shift Schedule for more details.

OTA: lm

Black Mesa Research Facility — Support Personnel Division

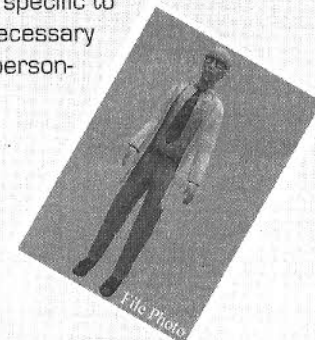
### SECURITY SHIFT SCHEDULE - SPRING/SUMMER SEASON

SHIFT	SCHEDULE	SECTION/AREA	DESCRIPTION	CLEARANCE	SALARY CLASS
RED	0900-2200 May 15-Aug 15	Sector A Area 4	Personnel Dormitories	Low	C
ORANGE	2100-1000 May 15-Aug 15	Sector A Area 4	Personnel Dormitories	Low	C
YELLOW	0900-2200 May 15-Aug 15	Sector B Area 2	Admin. Offices	Medium	B
GREEN	2100-1000 May 15-Aug 15	Sector B Area 2	Admin. Offices	Medium	B
BLUE	0900-2200 May 15-Aug 15	Sector C Area 3	Anomalous Materials Laboratories	High	A
INDIGO	2100-1000 May 15-Aug 15	Sector C Area 3	Anomalous Materials Laboratories	High	A
VIOLET	Standby	?	?	High	C

## Black Mesa Personnel



Many scientists, security guards and other personnel populate the Black Mesa Research Facility. Each civilian employee is granted security access specific to his or her duty, so it will be necessary to gain clearance from the personnel.



As you go about your day-to-day activities, it's helpful to communicate with your coworkers. Simply approach them, show them your badge (hit the Use key) and they should respond. Report all breaches of authority to your administrative sponsor.

When on duty, you'll often be called upon to not only protect secured areas of the facility, but to help out with general maintenance tasks. Follow instructions well and you'll be assured long and stable employment with the Black Mesa Research Facility.

## Enemies

The Black Mesa Research Facility is involved in a wide spectrum of scientific research, some of which involves what may appear to be strange species of animal. Should any of the research specimens escape, you may be called upon to assist in their capture.

There are over a dozen different species. Some are capable of working in teams, others are loners. Some will attack without provocation and track you by your scent. Others would rather avoid conflict and chose to prey on lesser creatures. In all cases, consider these species extremely dangerous.

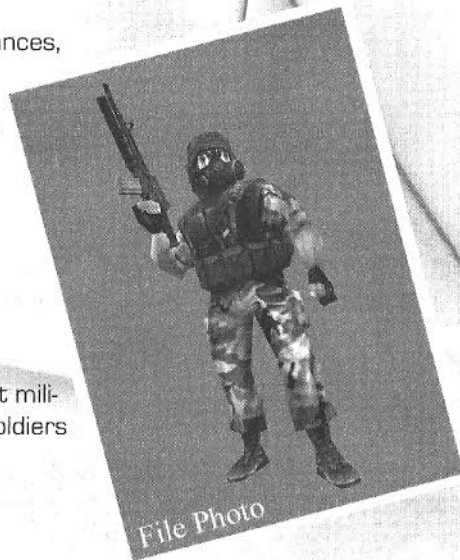
This barnacle is a stationary creature that attaches itself to ceilings and lies in wait. Its passive approach doesn't make it any less deadly. Of course, plenty of the species Black Mesa Research Facility is studying are quite mobile - you'll see.



Blue Shift

Additionally, in extreme circumstances, your government may send in a dangerous and very efficient clean-up crew. It will be your duty to assist the military in any way necessary to deal with whatever threat they've been dispatched for.

This is just one of several different militia types. Be on the lookout for soldiers and trained assassins.



## Using Things

**Doors and Buttons** - Many objects can be manipulated by hitting the Use key. Some doors, for example, open automatically. Others require you to open them with the Use key. Finally, some doors will only open with the correct security clearance code or retinal scan. In these cases, try Using the keypad or retinal scanner located near the door. There are other buttons you may have to Use to operate elevators, machinery or lab equipment located throughout the facility.

**Levers and Wheels** - Sometimes, you'll encounter levers and wheels that must be continually pulled or turned to achieve the desired effect. In this case, you'll need to hold the Use key down to perform the action.

**Crates, Carts, Chairs and Barrels** - Sometimes it's helpful to move things out of the way or move them into a good position for climbing. Pull boxes and carts into new positions by holding down the Use key and walking slowly backwards. To push a moveable object, just walk up to it, then continue moving steadily. Add the Use key when pushing things forward to give the object extra momentum.

**Power Ups** - Activate wall-mounted First Aid kits by stepping up to them and holding down the Use key. In Blue Shift, Barney's vest and helmet are unaffected by HEV suit chargers.

## Equipment

As Barney Calhoun, you'll be issued a number of useful items. You may also come into possession of other valuable pieces of equipment to be utilized at your discretion. If you have any questions about the appropriateness of any utilities you discover during the course of your employment, contact the office of the administrator.

### Flashlight

The standard issue flashlight can be toggled on and off by pressing the Flashlight Button (F). The flashlight uses batteries that will drain over time, so don't forget to turn it off when you exit a dark area. The flashlight's batteries will recharge themselves automatically when not in use.

### Armor Vest and Helmet

When you begin assignment with Blue Shift, you must wear an armor vest and helmet. This armor will protect you from damage. Changing facilities are located in the security center locker room where you will find your armor. If your protective equipment ever becomes damaged beyond the point of usefulness, you may find fresh vests and helmets located throughout the facility.



## Weapons

The Black Mesa Research Facility is built upon a decommissioned military missile base. Therefore, there are many armories and weapons caches located throughout the facility. You'll be issued a standard 9mm side arm, but much, much more powerful weapons may become available to you during the course of your duty.

To learn more about selecting a particular weapon from your inventory and firing it, see the section about Weapon Selection in your training manual.



Some of the weapons you'll find have an alternate attack mode. Discover which weapons have two uses and experiment with your options.

### Crowbar

The Black Mesa Research Facility is a complicated place where a crowbar can really come in handy. Things like barrels, boxes, gears, crates and vents can be pried open, smashed or otherwise wrenched loose with the crowbar. You'll find critical paths that have been blocked or sealed shut. You can dig through such obstacles with your crowbar. You can also use your crowbar to break glass and bludgeon approaching enemies.



### Pistol

You acquire this 9mm pistol early in the game. Although it may seem outdated as you acquire more technologically advanced weapons, don't forget about it; it's one of the few weapons that fire underwater.



### Assault Rifle

This is one of the first weapons you'll find with both primary and secondary attack options. The military assault rifle has an attached grenade launcher (secondary attack). It has great range and fires rapidly. Its primary attack fires 50-round clips of 9mm bullets, while the secondary attack launches grenades.



To Do:  
 1. Buy milk  
 2. Pay Water Bill  
 3. Call Joe  
 4. Buy flowers for Lauren  
 5. Change oil

## WAR DEPARTMENT

### BASIC FIELD MANUAL

## SOLDIER'S HANDBOOK

January 13, 2000  
 Including CB40, March 20, 1998

March 3rd  
 Another typically hellish day at base camp. I'll be glad when this is over and I can get assigned a mission. There has been this really weird civie spotted at the base. Rumor is he's from some government branch looking to recruit; others say he's with some secret research group. I would jump at the chance to join. It would be cool just for the change and the adventure.

#### NOTE.

No initial distribution will be made of this manual as it contains only minor changes to the November 1, 1999, edition. Replacement of copies now in the hands of individuals is not authorized.

## 108. (a) KNOWING YOUR SQUAD



### ENGINEER

The engineer is equipped with the tools necessary to adapt to changing situations in the field. He can even be utilized to cut through sealed doors. To have a torch engineer work for you, lead him to a door that needs cutting and he'll do his job. The engineer is capable of fighting with his sidearm, but care should be taken to keep your engineers alive at all costs. If you lose the only engineers available to cut a passage, you may fail your mission. Also, be careful not to allow the torch soldier's fuel tank to sustain damage. If the canister is pierced, it is likely to explode. March 7<sup>th</sup>

### SOLDIER

The squad assault soldier is equipped with a shotgun, MP-5 sub machinegun or an M-249 light machinegun. Sometimes, soldiers may carry grenades. These soldiers will loyally follow you should you give the order. Simply face the grunt and hit your Use key. You can also command the soldier to guard the area around where he stands. "Use" him again and he'll stay put.

### MEDIC

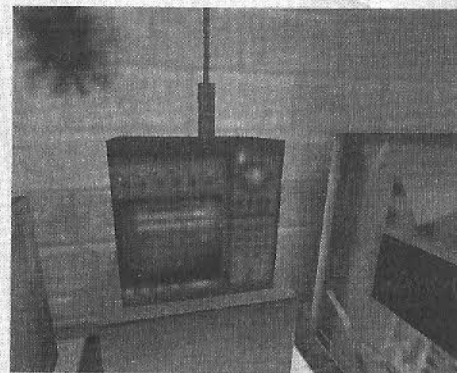
The medic is trained in first aid and emergency surgery and has the ability to heal wounded soldiers in the field. To get the help of a medic, face him and press and hold your Use key. The medic will continue working on you as long as the Use key is held or until you are fully healed. Medics do carry limited supplies and if used repeatedly will no longer be able to heal you or your squad. During combat other soldiers may call for a medic and if he can hear them, he'll try to run to their aid. Medics are equipped with a .357 Desert Eagle sidearm for combat, but are best kept safely behind the front lines.

I finally saw the government guy today. I am not sure he is a g-man, but he was wearing a really uptight suit and carrying a briefcase. He looked more like a lawyer or insurance agent to me. I did notice him checking me out. Several times throughout the day I spotted him just watching me during training. I wonder what he's up to...

## 109. REGARDING OBJECTS IN COMBAT

### Radio

Communication could be considered to be the most important tool of any soldier. Radios are used to allow soldiers in the field to maintain constant communication with each other. The radio is usually a stationary object, therefore it cannot be carried around. But, the usefulness of a radio in the field should never be ignored. Face the radio and hit your Use key to operate it.



### Ropes

Ropes can be used to elevate troops to higher ground or safely rappel to lower surfaces. Learning how to use gravity and inertia to swing on ropes allows them to be used in creative ways. Ropes are similar to ladders - to grab one, simply touch it. You can climb up and down by moving forward and back. Press jump key to leap off of the rope. You can swing yourself before letting go of the rope to hurl yourself through the air.



### March 9<sup>th</sup>

For weeks our drills have been the same crap day after day. Today we assemble for the morning run and our drill instructor tells us we have one week to become experts at indoor strategic combat. We will be spending every day this week at the combat simulation facility. As far as I know this is a specialized training not taught in boot camp. What I want to know is if this is to test our ability to adapt or if we are being readied for a specific mission? Time will tell.....



## II. MAINTAINING YOUR EQUIPMENT

### YOUR POWERED COMBAT VEST (PCV)

Early in the game, you must find and wear the Powered Combat Vest (PCV) your military has provided you with. The vest can be recharged periodically and the greater the charge, the more protective power your vest has. To recharge your vest, seek out a wall-mounted HEV or PCV charger, or pick up batteries along the way.



### NIGHT VISION GOGGLES

The soldier's mask and goggles are used in conjunction with the Powered Vest to provide you with night vision. The goggles use a special rechargeable battery within the vest, so cells used for armor protection are not drained when night vision is in use. The goggles can be toggled on and off and will provide you with visibility in the dark. They are not as useful in bright areas, however, so it is only recommended that you use your goggles only in low light conditions.



March 12<sup>th</sup>

The rumors have been flying since our indoor combat training began. Most of my peers are convinced that we are being primed for a mission. No one can agree on what the mission is. I have heard the name Black Mesa Facility thrown around a bit, but I have no information about the place. The rumors are that some top-secret research is going on there. Doesn't sound too exciting to me....

March 15<sup>th</sup>

The rumor has been confirmed. We are being trained for a mission at the Black Mesa Facility. All I know is that the place is being used by scientists who are doing some kind of new research. I can't imagine what we would be needed for. We were told today to be ready in case it happens tomorrow. I don't know what "it" is, but the whole thing is a little strange. I kind of hope it doesn't happen; the mission doesn't seem to have much excitement potential. I'd rather hold out for something with more likelihood of combat.

22nd combat.

## III. RULES GOVERNING EXECUTION OF ARMS

### DESERT EAGLE .357

The Desert Eagle is provided as a standard side-arm for field soldiers. It is therefore best used in close range combat. For assault teams, this weapon is fitted with a laser sight, making it the perfect tool for clearing trip mines and other small targets that require patient pin-point accuracy. The soldier has to be careful when using the laser sighting because it can reveal their position to the enemy. While the Desert Eagle does utilize a clip that allows a higher capacity than revolver type handguns, soldiers shouldn't burden themselves with much reserve ammunition. Never carry more than 36 rounds of .357 ammo.

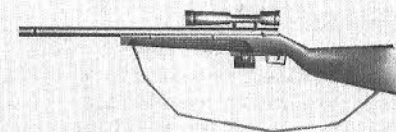
Class	Pistol (Group 2)
Ammunition	.357 Caliber
Damage	Medium
Capacity	7 Shots per Clip



### M-40A1 SNIPER RIFLE

The Sniper Rifle is used for exactly what the name implies, long range accuracy. The reload time is long and it fires only one shot at a time. But, the rifle is equipped with a high powered scope to enable a soldier to take out a target at distances up to half a mile. For obvious reasons this is not a close combat weapon. But, when used effectively, a sniper rifle can deliver many casualties as well as demoralize surviving enemies.

Class	Rifle (Group 6)
Ammunition	7.62mm NATO
Damage	Very High
Capacity	5 Shots per Clip



### M-249 SAW LIGHT MACHINE GUN

The Squad Assault Weapon (SAW) is the ultimate team combat gun. It can be used from a fall back position as a support weapon for suppressing fire or it can be used by a point soldier to quickly repel a defending force. Extra ammunition should always be kept available as the rate of fire of the M-249 causes most soldiers to burn through their stock seconds into the battle. While firing from a crouched stationary position the SAW is most accurate, but the accuracy rate decreases when fired while in motion.

Class	Machine Gun (Group 6)
Ammunition	5.56mm
Damage	High
Capacity	50 Shots per Belt



# HALF-LIFE®

## MULTIPLAYER

The Opposing Force multiplayer features eliminate the hassle of getting connected to the game of your choice. Whether you're new to multiplayer games or a seasoned veteran, you'll appreciate how fast and easy it is to get into the action.

(Note: For best results, connect to the Internet before selecting a multiplayer game.)

Opposing Force's multiplayer selections include:

<b>Quickstart</b>	<b>Chat Rooms</b>	<b>Customize</b>	<b>Exit</b>
<b>Internet Games</b>	<b>LAN Game</b>	<b>Visit Sierra</b>	

### Quickstart

Select Quickstart to get online and playing as fast as possible. Once you've logged on to our system, it will automatically check the list of current games and drop you into the best available game.

### Internet Games

Use this feature if you prefer to browse the list of available games. The list reports the speed of the network, which multiplayer map is being played, the name of the game being played, and the current number of players/maximum number allowed in the game.

**Connect:** To join a game, click on the game name, then click on Connect.

**Create game:** Host a new game on your computer.

**View game info:** Check players' names and scores, and review the rules chosen for your game.

**Refresh:** Get the latest information on the current list of games.

**Update:** Request a new listing of available games.

**Filter:** Look at a subset of available games.

**Add server:** Add a specific game to the list by manually entering its Internet address.

**Chat Room:** Visit the Chat rooms to hook up with other players.

**Exit:** Go back to the main multiplayer menu.

### Chat Rooms

Chat rooms are a great place to meet friends, taunt opponents or discuss strategy. To make getting started easy, a chat room will be selected for you automatically. Join in the discussion or switch to a different room by selecting List rooms. You can also search for a specific player or room name of a private chat room, you will be asked for a password before you can join the room.

### LAN Game

You can also play multiplayer Opposing Force on a LAN (Local Area Network). If you choose LAN game from the menu, Opposing Force will automatically check your LAN for active games. You can join a current game, refresh the list of games, create a new game, or add a specific game to the list by manually entering the Internet address.

### Customize

Opposing Force gives you the ability to customize the appearance of your character in multiplayer games. Select from a list of options for player face, model and skin.

You can also select a "spray paint" image that can be used to mark your territory or announce your clan affiliation. Use the T key to apply your image to walls and other surfaces.

### Visit Sierra

Connect to the Sierra website ([www.sierra.com](http://www.sierra.com)) to get the latest news on multiplayer games in the Half-Life universe. You'll also find tips and strategy guides, contests, mod and skin libraries and links to Half-Life fan sites.

24

# BLUE SHIFT

## DEATHMATCH

Opposing Force multiplayer includes a collection of "deathmatch" maps created by some of the most renowned first person action game designers in the industry. You can play deathmatch on a LAN or on the internet. The premise of deathmatch is to kill or be killed. The player that earns the most kills is the winner. The "All Star" designers who created custom arenas for Half-Life: Opposing Force are described below:



**Richard "Zdim" Carlson** - In the past, Richard has worked on Thief 2 at Looking Glass and American McGee's Alice at Rogue Entertainment. For the "All Star" collection, Richard created "Blue Meanie" (op4\_meanie).

**Marin "Kandyman" Gazzari** - Marin is a well known amateur designer who created the famed "Kndybase" maps for Quake as well contributing to the ZerStorer single player episode for Quake. For the "All Star" collection, Marin created "Kandy One" (op4\_kndyone) as well as re-creating the original Kndy Base map for Half-Life: Opposing Force (op4\_kbase).

**David "Kevlar" Kelvin** - When Gearbox contracted David, he was working on Unreal 2 for Legend Entertainment after having contributed multiplayer designs to Monolith's Shogo. Since his work on the "All Star" collection, David joined Grey Matter to work on Return to Castle Wolfenstein. His maps for OpFor include "Disposal" (op4\_disposal) and Xen Dance (op4\_xen-dance).

**Tom "Paradox" Mustaine** - Long ago, Tom contributed to Final Doom for id Software. Since then he's been behind such games as SiN and Heavy Metal: FAKK 2 at Ritual Entertainment. For the "All Star" collection, Tom created "Paradox Park" (op4\_park) and "Rubble" (op4\_rubble).

**Stephen "Reichert" Palmer** - Stephen earned a reputation as a strong designer in the Quake era with his "Dark Forest" single player mission. Stephen managed the development of all of the "All Star" maps and contributed "Outpost" (op4\_outpost). Since the "All Star" project, Stephen Palmer joined Gearbox full time as a designer.

**Eric Reuter** - Eric Reuter has a long background of games development, including work on 3dRealms' Shadow Warrior and Epic Megagames' Unreal. For the "All Star" collection, Eric created "Demise" (op4\_demise).

**The Levelord(TM)** - The famous Levelord created award winning games like Duke Nukem 3d, Quake: Scourge of Armagon and others and contributed "The Repentafrag" (op4\_repent) to the OpFor "All Star" collection.

Choose these maps when creating a LAN or internet multiplayer game, or choose the classic Half-Life deathmatch levels which appear in the map selection list.



## HALF-LIFE CTF

### Overview:

The goal in Half-Life: Opposing Force Capture The Flag (OpFor CTF) is simple: Capture the opposing team's flag and return it to your flag in your home base. The team who captures the most flags is the winner - but there are many other goals to strive for in OpFor CTF!

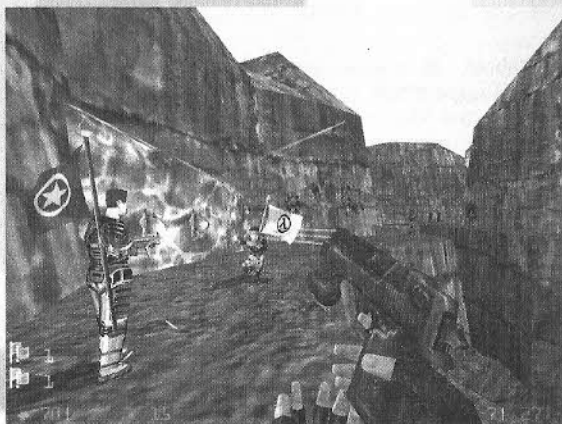
### Joining or Creating a New Game

To start or join a CTF game, navigate the multiplayer menus (as described on Page 24) and choose a game running a CTF map (designated with "op4ctf\_" in the map name). When creating a game, do so as if you're creating a deathmatch game, but choose a CTF map.

### Entering The Game:

When you first enter a CTF game you will be in spectator mode. You can fly around and explore if you are unfamiliar with the map.

Opposing Force CTF throws players into the classic confrontation of Soldiers vs. Civilians. Therefore, player's may join either the Civilian Black Mesa team (Orange) or the Soldier's Opposing Force team (Green). At this menu screen you can choose to join either of these teams specifically, become a spectator or, if you don't care what team you are on and just want to help out the team with the fewest members, you can select the "Auto Assign" choice.



### Scoring

The only way to score a capture in OpFor CTF is to return the enemy's flag to your own flag in the flag base. Each flag capture earns 1 capture point for your team as displayed in the flag HUD. Individual players may also score personal points by defeating the enemy, defending their flag or protecting a friendly flag runner.

### The Power-Ups

Opposing Force CTF includes five Power-Up items that will give the owner extra enhancements or abilities. When a player is the owner of a Power-Up, a large icon will appear on the middle left side of their HUD showing what Power-Up they currently possess. In addition to this, all of the Power-Up items have audio cues that will play when the Power-Up is in use. These audio cues can be heard by all players, friend or foe, who are standing within earshot of the owner of the Power-Up. To collect a Power-Up, simply touch it. The Power-Up will disappear from the ground and your HUD will update to display that you are now carrying the item. To drop a Power-Up, press the "Throw Power-Up" key (check your key configuration screen from the game menus)



Ammo Power-Up



Jump Power-Up



Death Power-Up



Shield Power-Up



Health Power-Up

### End Game Statistics

In addition to rewarding the winning team at the end of each game with a banner that's displayed for all players to see, OpFor CTF keeps track of many statistics that are reported in the end game menus. Also, when the end game menu is active, you can toggle between the standard scoreboard and the statistics screen.

# HALF-LIFE®

## Gearbox Credits:

### Production / Direction

**Blue Shift and Opposing Force:**  
Randy Pitchford

### Art Direction

**Blue Shift and Opposing Force:**  
Brian Martel

### Art, Models and Animation

**Blue Shift and Opposing Force:**  
Stephen Bahl  
Brian Martel  
Landon Montgomery

### Additional Art, Models and Animation for Blue Shift:

Matthew VanDolen

### Lead Level Designer

**Blue Shift and Opposing Force:**  
Rob Heironimus

### Level Designers

**Blue Shift and Opposing Force:**  
Matt Armstrong  
Rob Heironimus  
David Mertz  
Randy Pitchford  
Mike Wardwell

### Level Designers

**Opposing Force Online:**  
Stephen Palmer  
Brian Hess

### Programming

**Blue Shift:**  
Sean Cavanaugh  
Patrick Deupree

### Programming

**Opposing Force:**  
Patrick Deupree  
John Faulkenbury  
Steve Jones  
Sean Reardon

## Installation Programming:

Christopher McArthur

### Sound Effects

**Blue Shift and Opposing Force:**  
Rob Heironimus  
Stephen Bahl

### Writing

**Blue Shift and Opposing Force:**  
Rob Heironimus  
David Mertz  
Randy Pitchford

### Writing

**Opposing Force:**  
Kristy Junio

### Manual:

Kristy Junio  
Eli Luna  
Brian Martel  
Landon Montgomery  
Randy Pitchford

### Manual Layout:

Eli Luna

### Voices:

Jon St. John  
Kathy Levin  
Mike Shapiro  
Harry S. Robbins

### Original Music:

Stephen Bahl  
Chris Jensen

### Administration:

Stephen Bahl  
Landon Montgomery

## Sierra Studio Credits:

### President:

Dave Grenewetzki

### Sr. Vice President:

J. Mark Hood

### Sr. Producer:

Jeff Pobst

### Assistant Producer:

Bernadette Pryor

### VP Marketing:

Jim Veevaert

### Director of Marketing:

Lee Rossini  
Koren Buckner

### Brand Manager:

Charles Holtzclaw

### Marketing Assistant:

Michael Cowan

### Director of QA:

Gary Stevens

### QA Supervisor:

Ken Eaton

### QA Lead Tester:

Jim Gentle

### QA Tester:

Chris Bourdon  
Jared Guthrie  
Erinn Hamilton  
Rick Gusa

### Web Editor:

Guy Welch

### Director of PR:

Genevieve Ostergard

### PR Associate Manager:

Kellie Cosner

### Creative Services:

Mike Rodgers  
Orlena Yeung

## Valve is...

Ted Backman  
Kelly Bailey  
Jeff Ballinger  
Aaron Barber  
Yahn Bernier  
Ken Birdwell  
Derrick Birum  
Steve Bond  
Charlie Brown  
Dario Casali  
Francis Chu  
John Cook  
Daniel Cross  
Mike Dunkle  
Mike Dussault  
Rick Ellis  
Dhabih Eng  
Bill Fletcher  
Pat Goodwin  
Jaime Guthrie  
John Guthrie  
Brian Jacobson  
Erik Johnson  
Chuck Jones  
Paul Jones  
Marc Laidlaw  
Jeff Lane  
Chia Chin Lee  
Lars Liden  
Doug Lombardi  
Randy Lundeen  
Scott Lynch  
Gary McTaggart  
Chris Newcombe  
Gabe Newell  
Dave Riller  
David Sawyer  
Eric Smith  
David Speyrer  
Jay Stelly  
Harry E. Teasley  
Steve Theodore  
Mikel Thompson  
Bill Van Buren  
Robin Walker  
Josh Weier  
Doug Wood

## Gearbox would like to give Special Thanks To:

Richard Carlson  
Kellie Cosner  
Amanda Dunn  
Marin Gazzari  
David Kelvin  
Joe Kennebec  
Doug Lombardi  
Gabe Newell  
Frank Nuccio  
Tom Mustaine  
Genevieve Ostergard  
Jeff Pobst  
Dustin Porter  
Eric Reuter  
Danny Richardson  
David Sawyer  
Rob Selitto  
John Shaffstall  
Richard Gray  
Sierra Studios QA  
Valve Software  
Captivation Digital  
Laboratories



## CONTACTING SIERRA

=====

- A) Customer Service, Support, and Sales
- B) Technical Support
- C) Legal Information

- A) Customer Service, Support, and Sales

### United States

U.S.A. Sales Phone: (800) 757-7707  
Hours: 24 hours a day, 7 days a week

International Sales: (425) 746-5771  
Hours: Monday-Friday 8 AM to 4 PM PST  
FAX: (916) 939-1010

Sierra Direct  
P O Box 629001  
El Dorado Hills, CA 95762-9972

Email: [customer.support@sierra.com](mailto:customer.support@sierra.com)  
<http://www.sierra.com>

### United Kingdom

Vivendi Universal Interactive Publishing UK Ltd.  
Main: (0118) 920-9111  
Monday-Friday, 9:00 a.m. - 5:00 p.m.  
Fax: (0118) 987-5603  
Disk/CD replacements in the U.K. are £6.00, or £7.00  
outside the UK. Add "ATTN.: Returns."  
2 Beacontree Plaza,  
Gillette Way,  
Reading, Berkshire  
RG2 0BS United Kingdom

### France

Vivendi Universal Interactive Publishing France  
32, Av de l'Europe  
Bât Energy 1 (2e étage)  
78 140 VELIZY-Villacoublay  
France

Téléphone: 01-30-67-90-50  
Lundi au Jeudi de 10h à 19h  
Vendredi de 10h à 18h  
Fax: 01-30-67-90-65

### Germany

Vivendi Universal Interactive Publishing Deutschland  
GmbH.  
Tel: (0) 6103-99-40-40  
Montag bis Freitag von 10h - 19Uhr  
Fax: (0) 6103-99-40-35

Paul-Ehrlich-Straße 1a  
63225 Langen  
Deutschland

On-Line Sales  
CompuServe United Kingdom: GO UKSIERRA  
CompuServe France: GO FRSIERRA  
Internet USA:  
<http://www.sierra.com>  
Internet United Kingdom: <http://www.sierra-online.co.uk>  
Internet France: <http://www.sierra.fr>  
Internet Germany: <http://www.sierra.de>

### Disk and or Manual Replacement:

Product Returns\*:  
Vivendi Universal Interactive Publishing International  
Sierra On-Line Returns  
4247 S. Minnewawa Ave.  
Fresno, CA 93725

Vivendi Universal Interactive Publishing International  
Sierra On-Line CD/Doco Replacement  
4247 S. Minnewawa Ave.  
Fresno, CA 93725

NOTE: To replace your cd(s) please send only the  
damaged cd and copy of your dated Receipt, if less  
than 90 days. After 90 days please include a \$10.00  
handling fee along with the cd(s). For Documentation  
replacement, please include a \$5.00 handling fee and  
a photocopy ONLY of either your disk or cd. Payment  
should be made at the time of your request. Sorry, no  
credit cards.

\* Returns to this address valid in North America only.

## B) TECHNICAL SUPPORT

### North America

Sierra On-Line offers a 24-hour automated technical  
support line with recorded answers to the most fre-  
quently asked technical questions. To access this serv-  
ice, call (425) 644-4343, and follow the recorded  
instructions to find your specific topic and resolve the  
issue. If this fails to solve your problem, you may still  
write, or fax us with your questions, or contact us via  
our Web site.

Sierra On-Line  
Technical Support  
P.O. Box 85006  
Bellevue, WA 98015-8506

Main: (425) 644-4343  
Monday-Friday, 8:00 a.m. - 4:45 p.m. PST  
Fax: (425) 644-7697

<http://www.sierra.com>  
[support@sierra.com](mailto:support@sierra.com)

### United Kingdom

Vivendi Universal Interactive Publishing UK Ltd. offers  
a 24-hour Automated Technical Support line with  
recorded answers to the most frequently asked tech-  
nical questions. To access this service, call (0118)  
920-9111, and follow the recorded instructions to find  
your specific topic and resolve the issue. If this fails to  
solve your problem, you may still write, or fax us with  
your questions or contact us via our Internet or  
CompuServe sites.

Vivendi Universal Interactive Publishing UK Ltd.  
2 Beacontree Plaza,  
Gillette Way,  
Reading, Berkshire  
RG2 0BS United Kingdom  
Main: (0118) 920-9111  
Monday-Friday, 9:00 a.m. - 5:00 p.m.  
Fax: (0118) 987-5603  
<http://www.sierra-online.co.uk>

### France

Vivendi Universal Interactive Publishing France  
32, Av de l'Europe  
Bât Energy 1 (2e étage)  
78 140 VELIZY-Villacoublay  
France

Téléphone: 01-30-67-90-50  
Lundi au Jeudi de 10h à 19h  
Vendredi de 10h à 18h  
Fax: 01 30 67 90 65

<http://www.sierra.fr>

### Germany

Vivendi Universal Interactive Publishing Deutschland  
GmbH.  
Technischer Kundendienst  
Paul-Ehrlich-Straße 1a  
63225 Langen  
Deutschland  
Tel: (0) 6103-99-40-40  
Montag bis Freitag von 10 - 19Uhr  
Fax: (0) 6103-99-40-35  
Mailbox: (0) 6103-99-40-35

<http://www.sierra.de>

### Spain

Vivendi Universal Interactive Publishing España  
NUESTRA SEÑORA DE VALVERDE Nº 23  
28034 MADRID  
Spain

Tech Support Teléfono: 91 735 24 37

Soporte técnico de lunes a Viernes  
de 09:30 a 15:00 y de 16:00 a 18:30

[www.havasinteractive.es](http://www.havasinteractive.es)  
Soporte Técnico: [support@havasinteractive.es](mailto:support@havasinteractive.es)  
Comercial: [comercial@havasinteractive.es](mailto:comercial@havasinteractive.es)

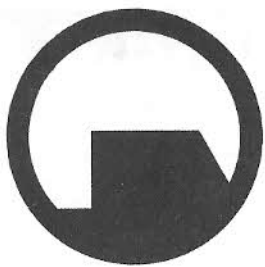
### Italy

Vivendi Universal Interactive Publishing Italia spa  
Contattare il vostro distributore.

## C) Sierra Warranty & Legal Information

Sierra's end user license agreement, limited warranty  
and return policy is set forth in the EULA.txt, found on  
the CD, and is also available during the install of the  
product.

Copyright (2001 Sierra On-Line, Inc.)



## Looking for a new job?

Then the look is over!

The Black Mesa Research Facility is looking for hard working people just like you. If you enjoy a challenge and working with fun people the Black Mesa is just the place for you.

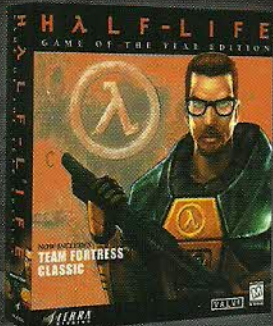
If you join our team of dedicated workers you can look forward to benefits like:

- 3 days paid vacation after each year of employment
- Paid holidays (Federal holidays only)
- Corporate trips to far off lands
- Direct deposit
- 10% off at the BMRF food court and cafeteria
- 20% video rentals at local "*Mesa Rentals*"
- Knowing you are making a difference for tomorrow

The job of your dreams is now available so hurry and call 555-MESA before this opportunity is gone.....



# Complete Your Half-Life® Collection with the Game of the Year Edition and Counter-Strike.

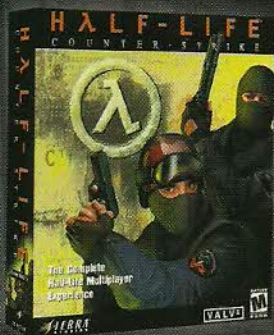


## Half-Life®: Game of the Year Edition

Named Game of the Year by more than 50 publications and "the best PC game ever" by PC Gamer. Also includes Team Fortress® Classic, the hugely popular team-based multiplayer game.

## Half-Life®: Counter-Strike

The number one online action game, Counter-Strike features strategic team play set in terrorist versus counter-terrorist scenarios.



Find out more at [www.sierra.com](http://www.sierra.com)



Call 1-800-757-7707 or visit your local retailer today

©1998-2001 Sierra On-Line, Inc. All Rights Reserved. Half-Life and Blue Shift are trademarks and/or registered trademarks of Valve, L.L.C. Sierra and the "S" logo are trademarks of Sierra On-Line, Inc. Any other company and/or product names are the property of their respective owners. ® designates trademarks registered in the U.S.A., which may be registered in certain other countries. 7119910