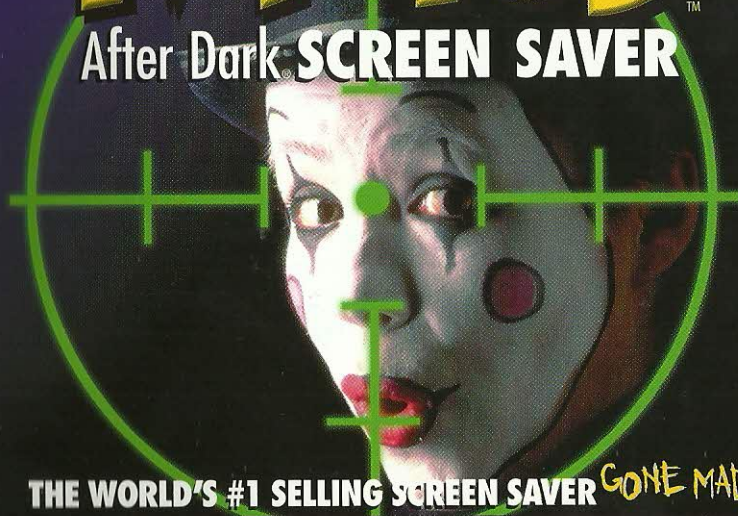


TOTALLY TWISTED

After Dark **SCREEN SAVER**™



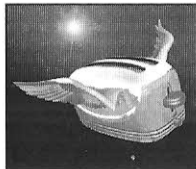
THE WORLD'S #1 SELLING SCREEN SAVER **GONE MAD**



Call 1-800-757-7707 or visit your local retailer today. See our web site at www.sierra.com

©1998 Berkeley Systems. ©1998 Sierra On-Line Inc.® and™ designate trademarks of, or licensed to Sierra On-Line, Inc., Bellevue, WA 98007. All rights reserved.



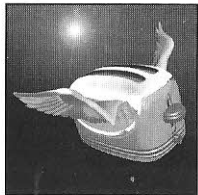


AFTER DARK WINDOWS QUICK REFERENCE GUIDE

Introduction to After Dark.....	1
Random Fun Links	1
Terms to Know	2
Installing After Dark	2
After Dark Control Panel.....	3
After Dark Setup.....	6
Technical Support	8
Contact Information	9

WINDOWS QUICK REFERENCE GUIDE

AFTER DARK



After Dark is the fun, entertaining and animated screen saver from Berkeley Systems. A screen saver is a fun way to protect your screen from the shadowy images that can appear when the same motionless display sits on your screen too long and screen phosphor is destroyed. This problem is called burn-in. After your computer has been inactive for a set period of time, After Dark presents a screen-saving Display.

RANDOM FUN LINKS

www.Bezerk.com

The Premier Online Entertainment

Featuring the most unique entertainment experiences on the Web, play You Don't Know Jack the netshow, the online version of the best-selling game. Go Bezerk and find out why the Internet will never be the same!

This Quick Reference Guide contains all the information you need to install After Dark and get familiar with its features. However, if you need more help with specific features or operations, just access the online help located within After Dark. For information concerning general Windows operation, please consult your computer's User's Guide.

TERMS TO KNOW

After Dark Display. An individual screen-saving Display, such as Starry Night or Flying Toasters.

After Dark Control Panel. The window that lets you run After Dark Displays and change their settings.

After Dark Icon. A very small blue and yellow picture of an After Dark screen, which appears in the notification section of the Windows 95 taskbar, just to the left of the clock. You can click this button to open the After Dark Control Panel.

Tree View of Displays. The list of screen saver Displays that appears in the list box on the After Dark Control Panel. The Displays are organized in a tree format, grouped within product folders for each Berkeley Systems screen-saver product.

Randomizer. A feature that lets you choose any number of Displays that will be shown in random order when your After Dark screen saver is activated. You can also set how long you want each Display to run.

INSTALLING AFTER DARK

Typical Install puts all of After Dark's necessary files in their proper locations and updates any other Berkeley Systems screen savers you own. Remember to turn off any other screen savers and all anti-virus programs before you install. To install After Dark, follow these step-by step instructions.

Place the After Dark CD into your CD-ROM drive. Click the Start button in the Windows 95 taskbar and select Run. In the Command line box, type d: setup (where d: is the letter of your CD-ROM drive). Select OK. A Setup Wizard will guide you through the installation. When the Choose a Destination box appears, select OK to install to the suggested default directory. Click the Browse button to install After Dark to a different directory. In the Setup Options box, select Typical Install to ensure all files are properly installed. Select Custom if you only want to install selected components of After Dark. Follow the on-screen instructions.

This version of After Dark replaces older versions of the After Dark control panel that you have installed on your computer. If you own other Berkeley Systems screen saver packages, Displays from those packages will be put into individual folders within the After Dark Files folder. Those folders appear as options in the After Dark Control Panel.

AFTER DARK CONTROL PANEL

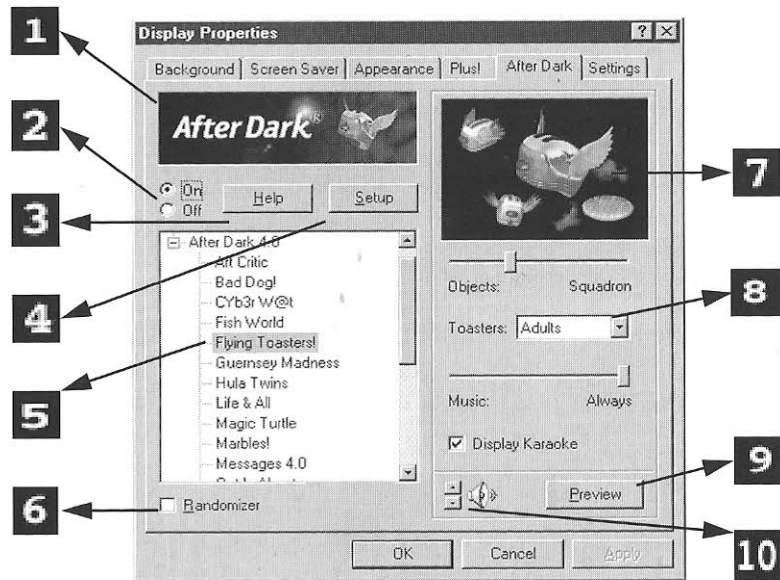
The After Dark Control Panel allows you to choose which Display will run when your screen falls asleep, preview After Dark Displays, turn After Dark on or off, see credit information or select further setup options.

Opening the Control Panel

Open the After Dark Control Panel by doing any of the following: Click the After Dark Icon that appears next to the clock in the notification section of the Windows 95 taskbar. Click the Start button, choose Programs, and choose After Dark from.

the After Dark options. Right-click on your Windows 95 desktop, choose Properties from the pop-up menu, and click the After Dark tab. Click the Start button on the taskbar, choose Settings and then choose Control Panel. Double-click the Display icon and click the After Dark tab.

AFTER DARK CONTROL PANEL



GUIDE TO AFTER DARK CONTROL PANEL

- 1** Faceplate - click on it for the credits and other information.
- 2** On/off switch
- 3** Help is just a click away!
- 4** Setup adjusts other After Dark settings.
- 5** Tree view list of Displays grouped into Product Folders.
- 6** Select Randomizer and checkboxes appear next to the displays. Choose your favorites to cycle through at random
- 7** Mini-preview shows you how the Display looks and runs.
- 8** Each Display has its own settings that you can adjust.
- 9** Get a full-screen preview of the selected Display.
- 10** Adjust the volume for each Display.

AFTER DARK SETUP

