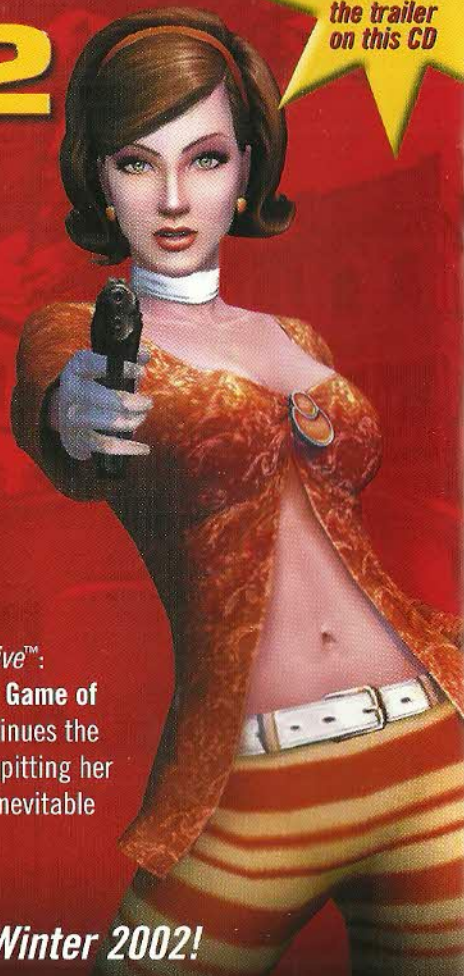


No One Lives Forever 2

A SPY IN H.A.R.M.'S WAY™

Check out
the trailer
on this CD



The anticipated sequel to *The Operative™*: *No One Lives Forever™*, named **Action Game of the Year** and **Game of the Year**, continues the adventures of super-spy Cate Archer, pitting her once more against H.A.R.M. and the inevitable threat of global catastrophe.

Available Winter 2002!



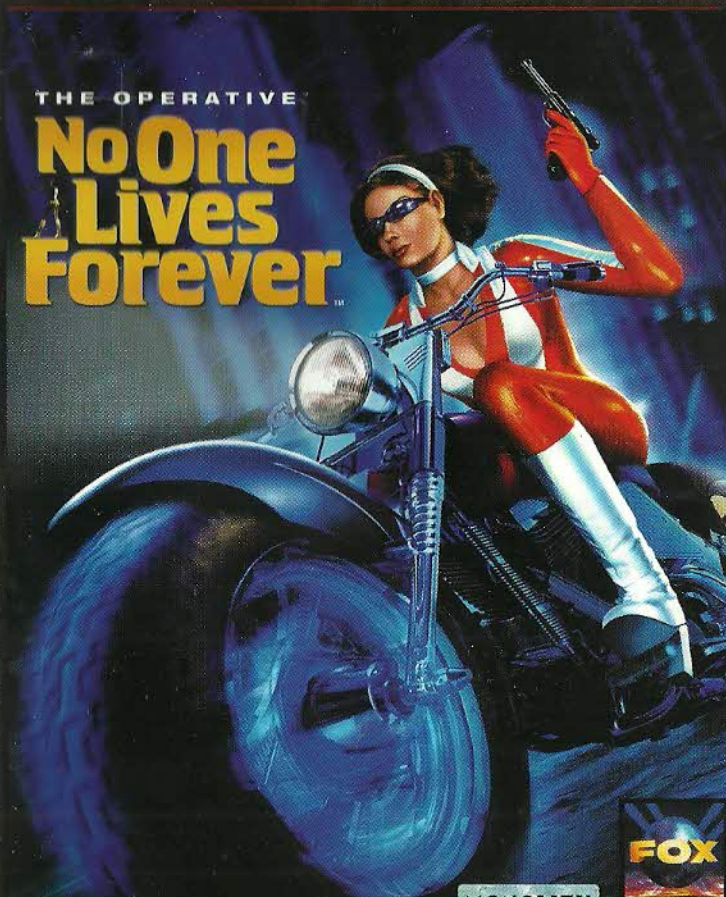
©2002 Monolith Productions, Inc. ©2002 Twentieth Century Fox Film Corporation. Fox Interactive, No One Lives Forever and their respective logos are trademarks of Twentieth Century Fox Film Corporation. Monolith and A Spy In H.A.R.M.'s Way are trademarks of Monolith Productions, Inc. Sierra and the Sierra logo are trademarks of Sierra Entertainment, Inc.

<http://nolf2.sierra.com>

S0026181

Best Seller SERIES

THE OPERATIVE No One Lives Forever™




MONOLITH



THE OPERATIVE

No One
Lives
Forever



© 2000 Twentieth Century Fox Film Corporation. No One Lives Forever © 2000 Monolith Productions, Inc. LithTech™ game engine © 1997-2000 LithTech, Inc. All rights reserved. Fox, Fox Interactive, The Operative, No One Lives Forever and their associated logos are trademarks of Twentieth Century Fox Film Corporation. LithTech is a trademark of LithTech, Inc. Windows, DirectX, Direct3D are trademarks or registered trademarks of Microsoft Corporation in the United States and/or other countries. Pentium is a registered trademark of Intel Corporation Inc.

**Fox Interactive Presents:
A Monolith Production of**

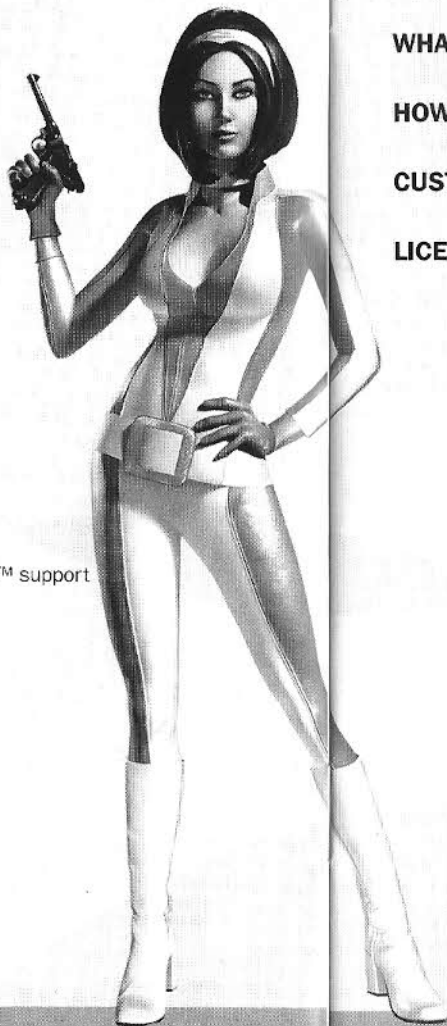
**THE OPERATIVE™ in
No One Lives Forever™**

No One Lives Forever™ is powered by **LITHTECH™**

Check out the official *No One Lives Forever™* website at
www.the-operative.com

Check out other Monolith titles at
www.lith.com

Check out other Fox Interactive titles at
www.foxinteractive.com



SYSTEM REQUIREMENTS

MINIMUM SYSTEM REQUIREMENTS

- Windows® 95/98/ME/2000
- Direct X™ 7.0 or higher
- Pentium® II 300 Mhz
- 64 MB RAM
- 8 MB 3D hardware accelerator card with Direct 3D™ support
- High color graphics (16-bit)
- 4x CD-ROM
- Mouse
- Keyboard
- 56K modem or LAN for multiplayer
- 400 MB free hard drive space
- Direct X compatible 16-bit sound card

TABLE OF CONTENTS

INSTALLING THE GAME.....	4
CLEAN UP YOUR SYSTEM BEFORE RUNNING THE GAME ...	5
WHAT IS DIRECTX™	6
HOW DO I INSTALL DIRECTX 7.0?	7
CUSTOMER SERVICES.....	8
LICENCE AGREEMENT	9

INSTALLING THE GAME

To begin, insert the *No One Lives Forever* Disc 1 into your CD-ROM drive. If AutoRun is enabled on your computer, the install screen should appear within a few seconds.

Install: This option will launch the setup utility. Follow the on-screen prompts to navigate through the setup screens as follows:

In the **Select Destination Directory** screen, click **Next** to install to the default folder or click **Browse** to install to a different folder on your hard drive.

In the **Install Type** screen, you may choose from one of two possible installation methods:

The **Normal** Installation requires 900 megabytes of free hard disk space and will copy both the game and all game data. For maximum performance, use this option.

The **Minimum** installation option requires 324 megabytes of disk space and will copy only the game files to your hard drive and leaves all levels and other data on the CD. This option is recommended if you need to conserve hard drive space.

In the **Select Program Folder** screen, simply click **Next** to add Fox Interactive/*No One Lives Forever* to the default folder in your Start menu or specify a different folder.

Once setup is complete, click **Next** to exit the installer.

Uninstall: This option becomes available only after the game has been installed. It allows you to easily remove the game files from your hard drive. Please note that other programs may share certain installation files, so you may be prompted for confirmation before some of these files are removed.

Install DirectX 7.0: This option is required if you do not already have Microsoft's DirectX version 7.0 or higher installed on your computer.

Read Me: Provides useful information on installing and starting the game, as well as last-minute information that didn't make it into this manual.

CLEAN UP YOUR SYSTEM BEFORE RUNNING THE GAME

Before you install any software, it is critical that your hard drive be in proper working order. We recommend that you perform regular "house keeping" by running ScanDisk and Disk Defragmenter.

- **ScanDisk** searches your hard drive for any lost data.
 - **Disk Defragmenter** ensures that your data is sorted properly. Failure to verify this may result in corrupt data.
1. To run ScanDisk, click on the START button from the Taskbar.
 2. From the Start menu, select RUN.
 3. In the *Run* dialog box, type **scandisk** and click OK.
 4. Once the program starts, ensure that you have selected THOROUGH in the *Type of test* section. The process will take a while to complete but the results are well worth the time invested. Make sure there is a check mark in the AUTOMATICALLY FIX ERRORS box and select the hard drive you are installing the game to (e.g., C:).
 5. Once everything is set up correctly, click START to have the program scan the drive and correct any errors.
 6. Next, run Disk Defragmenter. Click START from the Taskbar.
 7. From the Start menu, select RUN.
 8. In the *Run* dialog box, type **defrag** and click OK.
 9. As with ScanDisk, select the drive you are installing the game to and click OK. This process will also take some time, but is again worth the effort to ensure a trouble free installation of your game.

