

TrainTown Hotkeys

Certain keys may be used to perform specific actions while a job is in progress.

<u>Key</u>	<u>Action</u>
Return	Causes Selected Train to Stop
Spacebar	Causes All Trains to Stop (Emergency)
N	Selects Next Car
P	Selects Previous Car
W	Blows Train Whistle
T	Toggle Tool Bar (Try It, It's Cool.)
Arrow Keys	Scroll Map (Shift Will Accelerate)
Keypad +/-	Zoom In/Out on Map Overview
M	Map Tab
O	Option Tab
I	Information Tab
Esc	Exits Job
Pause	Pauses Job
Alt-F4	Exits Job to Windows
Alt-Esc	Minimizes Game, Returns You to Desktop

SIERRA
attractions

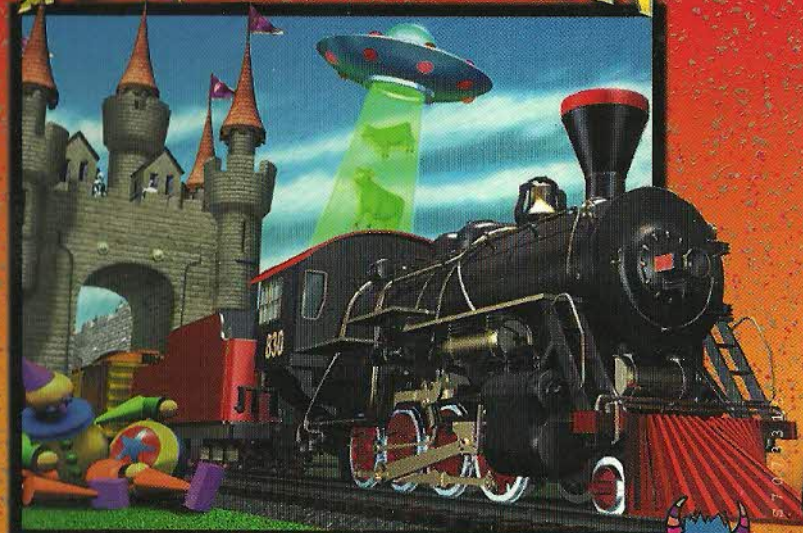
Call 1-800-757-7707 or visit your local retailer today. See our web site at www.sierra.com.

©1999 Sierra On-Line, Inc.™ and ™ designate trademarks of, or licensed to, Sierra On-Line, Inc., Bellevue, WA 98007. All rights reserved.

3-D
ULTRA



TRRAINTOWN



SIERRA
attractions

The Best In Family Entertainment



3D
ULTRA™

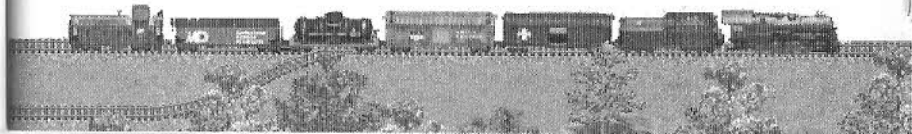
LIONEL TRAINS™

TRRAINTOWN

“Now boarding 3D Ultra: Lionel® TrainTown!”

*Sierra Attractions delivers
a freight car full of fun
for the whole family.*

SIERRA™
attractions



Contents

Getting Started	3
Installation and Set-Up	3
Begin Playing	5
Working in TrainTown	10
Choosing a Job	10
Operating Your Trains	14
Train Town Load Dependency Table	16
The Tool Bar Display	19
Picking Up and Delivering Loads	24
Coupling and Uncoupling Cars	26
Signal Flags and Semaphores	27
Laying Track (Track Editor)	28
Technical Support	31
TrainTown Hotkeys	Back Cover

Getting Started

Before you can play *3D Ultra: Lionel® TrainTown* you must first install the program on your computer's hard drive. We strongly recommend that you close other programs (like a virus scanner, if you have one) that may be running in the background.

Installation and Set-Up

AutoPlay (The Quick and Easy Way to Install Your Game)

The *TrainTown* CD contains an Autoplay program which automatically guides you through the installation process.

1. Put the *TrainTown* CD into your computer's CD ROM drive.
2. Once the Autoplay screen appears, click on the Install button.
3. Follow the on-screen installation instructions. Once you have successfully installed the game, you're ready to play!

Licensed by Lionel® LLC. Lionel is a registered trademark of Lionel® LLC.

What to Do if AutoPlay Doesn't Work

If the *AutoPlay* program doesn't automatically bring up the *AutoPlay* installation screen, you need to start the program yourself.

1. Click on the **My Computer** icon on your computer's desktop.
2. Right-click on the drive with the *TrainTown* icon (your CD ROM drive) to access a set of menu options.
3. Click the **Autoplay** option.
4. After the *Autoplay* screen appears, click on the **Install** button to begin.

Installing the Game

You are given two options when it comes to deciding how much of the game to install on your hard drive; *Minimum* and *Normal*. The *Minimum* option requires that you have the *TrainTown* CD in your CD ROM drive at all times while

playing the game. The *Normal* option allows you to play the game *without* having the CD in the CD ROM drive. (You'll be unable hear background music or see the intro movie without it, however.).

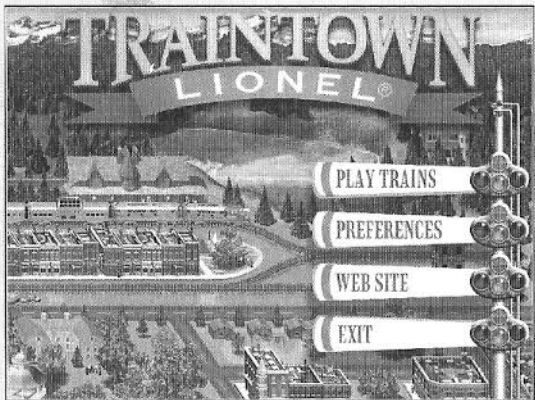
Almost Done...

Be sure to register your copy of *TrainTown* when prompted. Registration is a quick way to take advantage of exclusive promotions and product updates that you won't want to miss!

Begin Playing

Now that you've installed the game, there are several ways to begin playing;

1. Autoplay starts the game each time you insert the game CD into your CD ROM drive. Click on the **Play** button to begin.
2. You may also start the game by clicking on the desk-top **Start** button then selecting *Programs/Sierra/3D Ultra Lionel® TrainTown/3D Ultra Lionel® TrainTown*.



"All Aboard!"

It's time to board. You're presented with four game options; **Play Trains**, **Preferences**, **Web Site** and **Exit**. You'll notice that as your mouse pointer passes over these "hot spots," a pop-up banner gives you a short description of the button or option.

- **Play Trains**

Click on the **Play Trains** button to go to the *Sign In* roster and start the game.

- **Preferences**

Click on the **Preferences** button to go to your list of game preferences.

- **Web Site**

Click on the **Web Site** button to point your web browser to the *3D Ultra: Lionel® TrainTown* web site. Here you'll find the latest game information and links to many of our other *3D Ultra* titles.

- **Exit**

Click on the **Exit** button if you wish to exit the game. A dialog box prompts you for confirmation before returning you to your computer desktop.

