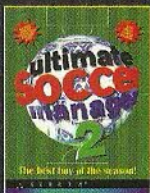


2 GOOD 2 BE TRUE

6 FULL CD-ROM
PRODUCTS



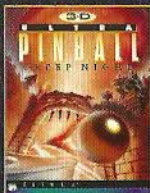
ULTIMATE SOCCER MANAGER 2 SPORT

The most powerful, realistic and graphically stunning football management sim ever.

How many times have you looked on in helpless despair as dodgy management decisions have controlled the performance of your favourite team? This game gives you the chance to put all that to rights with total control on

every aspect of your chosen side. Experience the anguish of losing and relegation, and the elation of victory and promotion.

- All updated player and team data for the 1996/97 season
- Beautiful screens with 3-D rendered SVGA graphics and animations
- A fantastic isometric view of seasonal pitches and stadiums



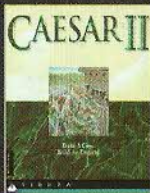
3-D ULTRA PINBALL: CREEP NIGHT PINBALL SIMULATION

Hours of addictive finger flipping action.

Flip your way to success around 4 fully inter-linked tables, themed to all ghostly corners of the haunted world. Put your reactions to the test against skeletons, gargoyles and other zombie-like creatures in the castle, the tower, the dungeon and... the final

confrontation. Experience this mad game which will keep you absorbed for hours on end.

- N°1 best selling pinball series
- An ultra-realistic look and feel
- Tons of bonuses, moving targets and animated sequences



CAESAR II STRATEGY

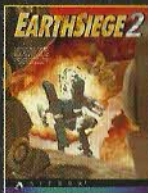
Re-build the Roman Empire.

Assume the role of Governor of a Roman province whose capital city, if you build it well, has the potential to become the jewel in the Empire's crown. Watch your city spring to life as you choose from the many authentic structures - temples, aqueducts, thermal baths. The challenge: to rise and become the next Caesar.

- Real time 3-D simulation
- Entire Roman Empire with all its provinces
- Accurate historical information

<http://www.sierra-online.co.uk>

© 1997 Sierra On-Line, Inc. ® and ™ designate trademarks of, or licensed to Sierra On-Line, Inc. All rights reserved. Windows® is a registered trademark of the Microsoft® Corporation.



EARTHSIEGE 2 ACTION

The final showdown: blood and bone against silicon and steel.

Following on from the mega hit EarthSiege 1, the Cybrids are regrouping on the moon with revenge at the top of their agenda. As a human resistance fighter you must pilot formidable combat robots known as Heres, in an all-out final guerrilla attack against the cybrid forces. The future of human existence rests squarely on your shoulders.

- Over 50 missions and 9 customisable Heres
- Wide variety of 3-D terrains (moon, desert, city...)
- Thundering robotic combat, gripping action and pyrotechnics galore



NASCAR® RACING 2 RACING SIMULATION

Experience the thrill of competing on real NASCAR® tracks.

If you've ever dreamt of having the awesome thrill of 700 horsepower under your foot as you race around a corner at 200 mph, then jump into the driving seat of NASCAR® Racing 2. Enjoy racing on your favourite tracks and challenging top NASCAR® drivers. NASCAR® Racing 2 is the most

phenomenal racing simulation ever developed featuring realism, speed, power and action.

- Over 100 officially licensed properties, including genuine tracks
- Extra fast SVGA graphics
- Includes 16 tracks with 2 night races



PRINT ARTIST 4 CREATIVITY & DESIGN

The printing package to bring out the artist in you.

Discover Print Artist, a comprehensive personal printing package. This latest version changes the face of publishing software forever. Never before has it been so easy to create your own high-quality greeting cards, business cards, posters, calendars and so much more. You'll soon wonder how you ever lived without it.

- Over 10,000 high quality cliparts and over 1,000 photos
- Over 300 character fonts
- Over 1,000 ready-to-use quotes



2 GOOD 2 BE TRUE

6 FULL CD-ROM
PRODUCTS



ULTIMATE
SOCCER MANAGER 2



EARTHSIEGE 2



CAESAR 2



3-D ULTRA
PINBALL 2



NASCAR® RACING 2

PRINT ARTIST 4



The Printing Package
to Bring Out
the Artist in You

SI011997 ENGLISH

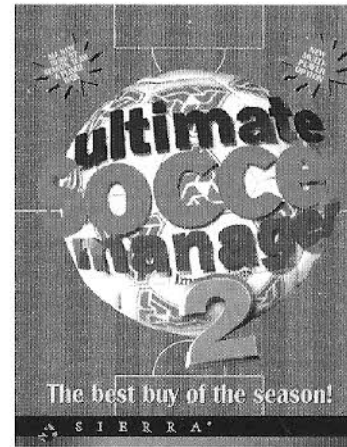


SIERRA®



SIERRA®

ULTIMATE SOCCER MANAGER 2



Sport

SYSTEM REQUIREMENTS:

Win 3.1+ /95, DOS 5.0+, 486 DX33,
8 MB RAM

■ **Installation and starting**

INSTALLATION

For the purposes of this manual, we have assumed that your CD drive is D. Please substitute D for your drive letter if different.

DOS – Insert the CD into your disk drive. At the DOS Prompt type D:
<return> Followed by INSTALL <return>.

WIN 95* – Insert the CD into your disk drive. From the main WIN 95* screen, select the start button. From this pop-up menu select run. Type D:\INSTALL <return>.

WIN 3.1* – This game has not been designed to run under Windows® 3.1* or Windows® 3.11*.

The program will ask you where you wish to install USM2. The default directory is C:\SIERRA\USM2. Once the program has finished copying the USM2 files onto your hard disk, you will be prompted for music/sound set up. Please note that not all files will be copied from the CD. The CD must remain in your cd-rom drive when playing the game.

If the game is not giving you sound or if the sound setup program does not appear automatically, then simply select the run command from the file menu in Windows®* and type:

C:\SIERRA\USM2\SETSOUND

and this will allow you to re-setup the sound card. Just type the command in DOS for the same effect.

* Windows® is a registered trademark of the Microsoft Corporation.

LOADING

For the purposes of this manual, we have assumed that you have installed the game to the default directory C:\SIERRA\USM2. (If you have selected another location, please substitute for correct location). Please make sure your USM2 CD is inserted into your disk drive.

DOS – Type C: <return followed by CD\SIERRA\USM2 <return>. Then type USM2 <return>

WIN 3.1* – From the main windows menu bar, select FILE. Then select RUN from the drop down menu. In the Command Line box, type C:\SIERRA\USM2\USM2

WIN 95* – Insert the CD into your disk drive. From the main WIN 95* screen, select the start button. From this pop-up menu select run. Type C:\SIERRA\USM2\USM2 <return>.

STARTING

After loading the game and viewing the opening animations and screens, select to start a new game or a previously saved game. If you have selected a new game, you will then be asked to choose how many players you wish to play. Select between 1 and 8 managers and then click on OK.

a) Now type in your manager name (first name followed by second name separated by a space).

b) You will then be prompted for your team selection. Highlight your team choice by clicking on the club name or by scrolling through the clubs using the arrows.

c) Before selecting your team you have the option of changing the names and statistics of the team members. This is the only time during the game that player's names and statistics can be edited. To edit your team click on the EDIT button. Click on any team member to alter their details or statistics. Once you have finished editing the stats you can save the changes by clicking on FILE. (In future games you can load in your edited teams at the start of every new game by clicking on the FILE button.)

d) When you are happy with your selected team, click on the SELECT button. If you have selected more than one manager, the above process will be repeated from section (a).

Starting Cash – You will now be prompted with a number of starting cash options. This will be the same for all managers if playing multi-player mode. Click on the amount you wish to start with. (Remember that the more you choose, the easier the game will be).

Commercial game on/off – Choose to play with this option turned on and it will be up to you to build and run your own shops, restaurants and stalls. Financial considerations can make or break a manager so be sure you are up to the challenge! If you decide to play without this option, then the assistant manager will handle all of this for you, prompting you when he thinks that more building work is necessary.

Music and Sound Options – Choose whether you wish to play with Sound and/or Music enabled.

Rigging on/off – This option allows you to play dirty if you so choose. Obviously no real manager would resort to such tactics, would they!

* Windows® is a registered trademark of the Microsoft Corporation.

■ The icon bar

Running across the top of the screen is the icon bar. This appears on all screens except the match playing screen. This has been especially designed to allow you to move more easily throughout the game.

Most of the game options are accessible from this bar. Click the mouse on any of these icons to go straight to that screen. The Icon bar options are from left to right :



Mainscreen – The main screen of the game depicting your stadium.



Ground Improvement – Enlarge and improve your stadium



Managers Office – Access to all your business functions



SierraText – Keep up to date with all fixtures, results, tables etc



Filing Cabinet – All the clubs files on you, the club and the players



Fax Machine* – All incoming faxes, the transfer list, etc



Notices* – Important notices from the Chairman, Assistant manager etc



Newspaper* – Match reports, transfer news etc



Transfer List – Direct access to the transfer list



Fixture List – Direct access to the fixture list



Chairman's Office – Report to the Chairman



Tickets – Ticket prices and allocation screen



Advertising – Ad board allocation screen

