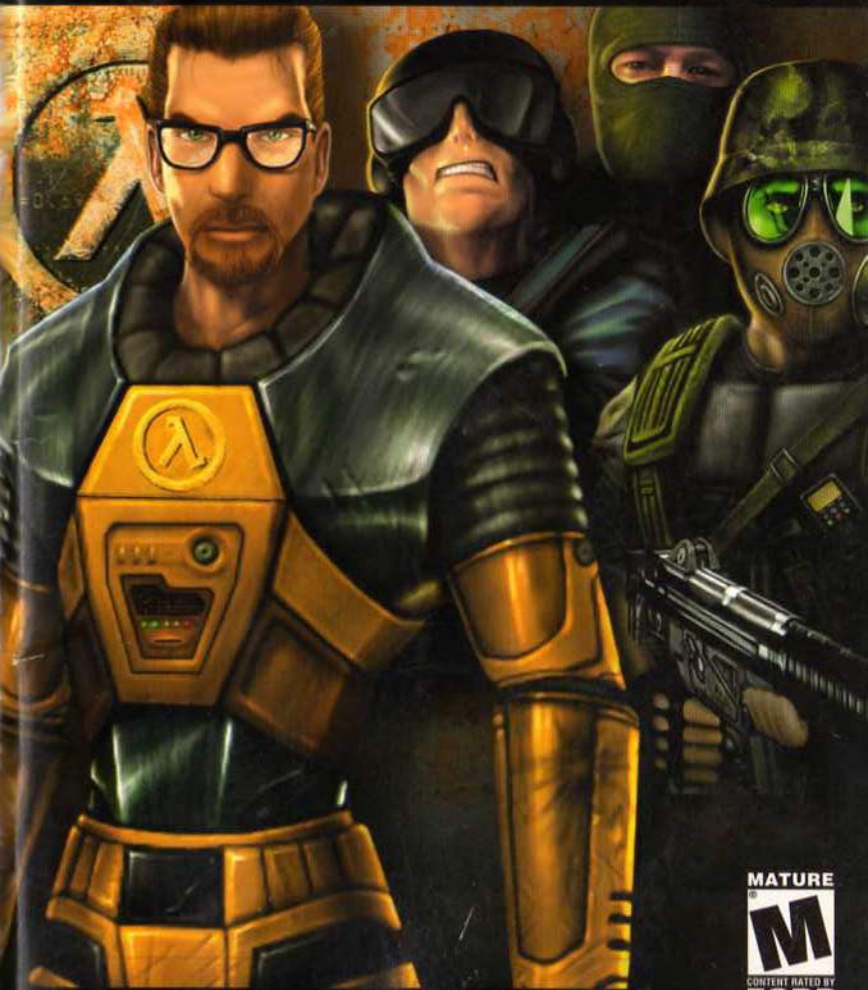


HALF-LIFE

PLATINUM COLLECTION



 **SIERRA™**

<http://www.replacementdocs.com>

gearbox
SOFTWARE

MATURE



VALVE

0.500/t = 0.693/t uranium-235
decay possible
breakdown :::: radon
k = -ln(0.500)/t = 0.693/t uranium-235
decay possible
breakdown :::: radon



HALF-LIFE

GAME OF THE YEAR

TABLE OF CONTENTS

HALF LIFE: GOTY	1	COUNTERSTRIKE	45
Getting Started	3	Overview	46
The Main Menu	6	Joining a Game	47
Controlling the Action	10	The Scenarios	49
On-Screen Information	16	Money	51
Weapons	19	Game flow	52
Enemies and Other Characters	20	Controls	53
Multiplayer	22	Weapons & Equipment	57
Worldcraft 2.0	25	HUD	58
Credits	27	Hints	61
		Web links	63
		Credits	64
OPPOSING FORCE	29	CONTACTING SIERRA	66
Knowing your Squad	30	Customer Service	
Objects in Combat	31	Support & Sales	66
Maintaining your Equipment	32	Technical Support	68
Execution of Arms	33	Sierra Warranty	
Multiplayer	34	& Legal Information	71
Deathmatch	37		
Opposing Force: Capture the Flag	39		
Credits	42		

GETTING STARTED

Installation

Insert the game CD into your CD-ROM drive. If your CD-ROM drive has AutoPlay enabled, click the Install button and follow the instructions. If AutoPlay is not enabled, double-click on the "My Computer" icon on your desktop. Double-click on the CD-ROM drive icon. Follow the installation instructions. If the game does not begin installing immediately, double-click on autorun.exe.

Minimum System Requirements

Windows® 95, Windows® 98, Windows® Me, Windows® 2000, Windows® NT(with service pack 4), or Windows® XP
Intel® Pentium® 233 or AMD K6-2

32 MB RAM

500 MB HD

2x CD-ROM drive

SVGA, high-color (16-bit) video card

Win-compatible sound card

32-bit Internet service provider with 28.8+ modem or LAN (for multiplayer modes)

Recommended System Requirements

Intel® Pentium® III or AMD Athlon

64 MB RAM

3D accelerator card (OpenGL or Direct® 3D)

56.6+ modem or higher Internet access or LAN

half life



Black Mesa Research Facility

Office of the Administrator
BLACK MESA RESEARCH FACILITY
Black Mesa, New Mexico

May 5, 200-

Dr. Gordon Freeman
Visiting Fellow
Institute for Experimental Physics
University of Innsbruck
Technikerstr.25
A-6020 Innsbruck, Austria

Re: Offer of Employment

Dear Dr. Freeman:

This letter shall confirm a recent telephone conversation in which you were offered, and did accept, a position at the Black Mesa Research Facility commencing immediately but no later than May 15. As discussed, you shall begin at Level 3 Research Associate status, assigned to the Anomalous Materials Laboratory. We understand that it will take some time to conclude your affairs at the University of Innsbruck and return to the United States. Please notify the Personnel Department of your intended arrival time immediately.

Since you are unmarried and without dependents, you have been assigned appropriate living quarters in the Personnel Dormitories. However, you may not gain

admittance to your quarters until Level 3 security processing is complete. Please bring this offer letter and all documents listed on the attached sheet to the Black Mesa Personnel Department no later than May 15. A retinal scan will not be necessary at this time, but we do require urinalysis and bloodwork to establish baselines for your medical history during your employment.

Please note that as a necessary condition of your work with anomalous materials, you may be required to wear and operate an HEV hazardous environment suit. You will be trained and certified in its use during the standard orientation process. All further questions regarding the Black Mesa Research Facility and your role as Research Associate will be answered during orientation.

As you know, Dr. Kleiner, your former professor at the Massachusetts Institute of Technology, originally recommended you for contact by the Civilian Recruitment Division. He wishes to extend his congratulations on your decision to accept our offer. Like Dr. Kleiner, we are confident that your career with the Black Mesa Research Facility will be a long and rewarding one.

Office of the Administrator
Civilian Recruitment Division
Black Mesa Research Facility

OTA: Im LM

THE MAIN MENU

Half-Life's Main Menu can be accessed at any time during a game by hitting the Escape key. Use your mouse or the up and down arrow keys to navigate inside of the Main Menu. Hit the Escape key at any time to go to the previous screen.

Before starting a game, your Main Menu choices include:

- New Game
- Hazard Course
- Configuration
- Load Game
- Multiplayer
- View readme.txt
- Previews
- Quit

NEW GAME

When you start a new game, you'll be asked to choose a level of difficulty.

Easy. Monsters are weak and are easy to kill.

Medium. Monsters are strong and are easy to kill.

Difficult. Monsters are strong and are difficult to kill.

HAZARD COURSE

Access the Hazard Course at any time during the game to perfect maneuvers like jumping and crouching, using objects, and firing weapons. The Hazard Course includes a target range as well as water and obstacle courses. A holographic guide will assist you through the course. If you are new to action games, we highly recommend that you visit the Hazard Course before you begin a new game.

CONFIGURATION

Set game options, optimize video and audio settings for your system, and customize keyboard controls to your liking. After setting your

configurations, hit the Done button to apply your settings and return to the Main Menu. Hit the Use Defaults button to restore the original settings.

Controls

The grid shown in the Controls Dialog box lists the default keyboard and mouse configuration. It also makes it easy to customize the configuration: just click on an action in the first column, press Enter, then press the key you wish to associate with that action.

Action. Describes the player action.

Key/button. Specifies the key or mouse control associated with that action.

Alternate. If you want to make an action accessible by more than one key or button, select an alternate in the right-hand column.

See the Controlling the Action section of this manual for a listing and description of Half-Life's default mouse and keyboard controls.

Advanced Controls

Crosshair. Adds a crosshair symbol to help you aim your weapons.

Reverse mouse. Reverses the up/down (Y axis) movement of the mouse. (Push the mouse forward to look down, and pull back to look up.)

Mouselook. Changes the mouse function from controlling your movements to controlling your ability to look around. Note that checking Mouselook disables Look spring and Look strafe.

Look spring. Automatically "springs" your view to center screen when you begin moving.

Look strafe. In combination with your mouse look modifier (;), this causes left-right movements of the mouse to strafe (slide you from side to side) rather than turn. It also returns your view to center screen when you begin moving.

Joystick. Enables joystick input. For information on configuring your joystick, refer to the Readme.txt file.

Autoaim. Automatically aims your weapon, making it easier to hit your target.

Audio

Game sound volume. Adjusts the volume of the game's sound effects.

HEV suit volume. Adjusts the volume of the instructions provided by your HEV suit.

High quality sound. If the speed of your computer is 166 Mhz or more, check this box for even richer, higher quality sound.

To hear Half-Life's music, you must have the CD in your CD drive. To adjust the volume of the music, go to the Start Menu/Programs/Accessories/Multimedia, and select the Volume Control applet.

Video

Video Options. Set video options such as screen size, gamma and glare reduction. Changes made to these controls will be reflected in the sample image window.

Screen size. Controls the amount of screen space the game uses. Reducing the screen size can often improve performance. Note that you cannot adjust the screen size if you are using an OpenGL video driver.

Gamma. Adjusts Half-Life's color balance to best suit your monitor. Move the slider until you can just make out the figure standing in shadow on the right side of the sample image.

Glare reduction. Adjusts darker colors to reduce glare on your monitor. Move the slider until you can see the camouflage pattern on the soldier's uniform.

Video Modes. Set video modes, choose video drivers. Half-Life will check your system for the presence of OpenGL and Direct3D video drivers. It may ask you to verify the results of this check. If you have one or both drivers currently installed on your system, they will appear as choices at the top of this screen. You can also choose to run Half-Life in software mode. If you do not have these video drivers installed, Half-Life will default to software mode.

Display mode. Half-Life evaluates your system's graphics adapter and automatically lists the display modes available for your computer. Selecting a higher resolution mode generally results in better quality images, but can lower game performance.

Run in a window. Check this box if you prefer to run Half-Life in a window rather than full screen.

Use mouse. Check this box if you are using the mouse to play Half-Life. Leaving the box un-checked will allow you to use the mouse outside the game window.

Gore Reduction. Use this feature to turn off blood and gore effects. This is a password-protected feature, designed to let parents control the level of violence. You will need to re-enter your password to turn the effects on again.

Updates. Receive updates of the latest Half-Life code, including new hardware drivers and bug fixes, if necessary. You will be able to see if a new update is available before you connect.

LOAD GAME

Select and start a previously saved game.

MULTIPLAYER

Join a multiplayer game on the Internet, chat with other Half-Life players, set up your own LAN, or customize your player character. For more information about Multiplayer options, see page 22.

VIEW README.TXT

Half-Life's Readme file contains basic information on system performance, product features, and troubleshooting. We recommend that you read it before playing.

PREVIEWS

Get information about *Half-Life: Team Fortress* and other up-coming Sierra Studios releases.

QUIT

Exit Half-Life. Don't forget to save your game.

If Half-Life is already running, your Main Menu choices will also include:

Resume Game

If you are in the middle of playing Half-Life when you enter the Main Menu, use the Resume Game menu item to return to the action.

Save/Load Game

Save your game or load a previously saved game. You may also save your game quickly from within Half-Life by pressing Quicksave (F6). Load this game by pressing Quickload (F7). Only your most recent Quick-saved game can be selected from the Save/Load menu.

CONTROLLING THE ACTION

You may want to charge into a room and start shooting everything in sight. Sometimes we do, too. But in Half-Life, there are many others ways to interact with your surroundings. Half-Life's environments are as realistic as possible, and this level of realism will affect the way you move around. For instance, there's gravity—if you stand on ceiling tiles, don't be surprised if they collapse under your weight. There are also multiple surface effects—yes, wet floors really are slippery. And, if hit hard enough, glass will break. You can also shoot bullet holes onto walls to mark your turf, or leave yourself location reminders.

Try experimenting with your environment. Use your wits as well as your weapons to outsmart opponents and navigate through tough spots.

Use Key

Firing weapons is just one of things you can do in Half-Life. Use your Use (E) key for all sorts of other activities.

People. Not everyone you meet is your enemy. You will encounter scientists and security guards who can provide cover fire, open locked doors or improve your health. Approach these characters and hit the Use key to get them to assist you. Hit the Use key again to leave them behind.

Objects. Many objects, including doors, switches, and buttons, can be activated by hitting the Use key. In some cases, you'll need to hold down the Use key to perform the desired action.

Power ups. Activate HEV suit chargers and wall-mounted first aid kits by stepping up to them and holding down the Use key.

Pulling. Pull boxes and carts into new positions by holding down the Use key and walking slowly backwards. (To push a moveable object, just walk up to it, then continue walking slowly.)

Configurations

Half-Life's default configuration accomodates two common styles of play: using both the keyboard (left hand) and mouse (right hand), and using the keyboard only. The commands for both styles are listed here for your convenience.

Customize Your Settings

You can customize your keyboard and mouse settings by choosing Advanced Controls from the Configuration section of the Main Menu. Joystick and gamepad users should refer to the Readme.txt file for information on how to configure these devices.

For a complete listing of console commands and controls, refer to the Readme.txt file.

KEYBOARD/MOUSE CONFIGURATION

With this configuration, you'll use the mouse to control your ability to look around (up, down, left and right) rather than to control your movements. To enable this function, check the "Mouselook" box under Advanced Controls in the Configuration menu.

Move forward	W	
Move backward	S	
Turn left/right	Mouse	Move your mouse left and right to turn.
Move left (strafe)	A	Strafing is ideal for side stepping enemy gunfire.
Move right (strafe)	D	
Jump	Space Bar	
Duck	Control	Ducking can be used in coordination with other actions, such as jumping or running. Release the control key to return to standing.
Crawl	Control + W	Crawling makes less noise than walking or running, which can be particularly helpful when trying to sneak past a noise-sensitive enemy.
Swim up	V	
Swim down	C	
Look up	Mouse	Move the mouse forward to look up.
Look down	Mouse	Move the mouse backward to look down.

Return vision to center	End	
Primary fire	Mouse 1	
Secondary fire	Mouse 2	Not all weapons have a secondary fire mode.
Reload	R	Reload times vary from weapon to weapon.
Long Jump	W + Control + Spacebar	Each Long Jump draws energy; wait a few seconds for a recharge before using Long Jump again. You must acquire a Long Jump module before you can perform this maneuver.
Walk	Shift	To slow down, hold the SHIFT key down. Release the key to resume running.
Flashlight	F	The flashlight draws energy, so don't forget to turn it off by hitting the F key again.
Previous Weapon	Mouse Wheel Up	Choose the previous weapon in the HUD.
Next Weapon	Mouse Wheel Down	Choose the next weapon in the HUD.
Last used weapon	Q	Choose the weapon used previous to your current weapon.
Use	E	
Show Score	Tab	For use in multiplayer games, it shows scores, names and other info.

KEYBOARD ONLY CONFIGURATION

Move forward	Up Arrow	
Move backward	Down Arrow	
Turn left	Left Arrow	
Turn right	Right Arrow	
Move left (strafe)	Alt + Left Arrow	Strafing is ideal for sidestepping enemy gunfire.
Move right (strafe)	Alt + Right Arrow	
Jump	Space Bar	
Duck	Control	Ducking can be used in coordination with other actions, such as jumping or running. Release the control key to return to standing.
Crawl	Up Arrow + Control	Crawling makes less noise than walking or running, which can be particularly helpful when trying to sneak past a noise-sensitive enemy.
Swim up	'(apostrophe)	
Swim down	/	
Look up	Page Up	Move the mouse forward to look up.
Look down	Page Down	Move the mouse backward to look down.
Return vision to center	End	
Primary fire	Enter	

Secondary fire	\	Not all weapons have a secondary fire mode.
Reload	R	Reload times vary from weapon to weapon. Reload only affects primary attacks.
Long Jump	Up Arrow + Control + Spacebar	Each Long Jump draws energy; wait a few seconds for a recharge before using Long Jump again. You must acquire a Long Jump module before you can perform this maneuver.
Walk	Shift	To slow down, hold the SHIFT key down. Release the key to resume running.
Flashlight forget to	F	The flashlight draws energy, so don't turn it off by hitting the F key again.
Previous weapon	[Choose the previous weapon in the HUD.
Next weapon]	Choose the next weapon in the HUD.
Last used weapon	Q	Choose the weapon used previous to your current weapon.
Use	E	
Show Score	TAB	For use in multiplayer games, it shows scores, names and other info.

ON-SCREEN INFORMATION

YOUR HEV SUIT

Early in the game, you must find and put on your Hazardous Environment (HEV) Suit. The suit needs to be recharged periodically—the greater the charge, the more protective power your suit has. To recharge your suit, seek out a wall-mounted HEV suit charger, or pick up batteries along the way.

THE HUD

Once you are in your HEV suit, the suit's heads up display (HUD) is activated. The HUD is an on-going barometer of health, available energy, and remaining ammo. The HUD allows you to survey and select from your weapons arsenal and inventory items. It also alerts you when you are sustaining environmental damage.



Your health on a scale of 1-100

Your suit's protective charge

Ammo remaining in the current clip

Total available ammo

Secondary ammo, if available

To fire using primary ammo, hit the Primary Attack (Mouse 1 or Enter) key. To fire with your secondary ammo, hit the Secondary Attack (Mouse 2 or \) key. To reload your weapon, hit the Reload (R) key.

Weapons Selection

Weapons fall into five general categories:

Low-tech (the crowbar)

Hand guns

Machine and Shotguns (shown expanded)

High-energy experimental weapons

Weapons that can be tossed or placed



As you discover weapons in Half-Life, they automatically get added to their proper categories, corresponding to keys 1-5 on your keyboard.

You can switch weapons one of three ways:

1. Toggle through all your available weapons by repeatedly hitting the Next Weapon or Previous Weapon (] or [) keys. Hit the Enter key to select the highlighted weapon.
2. Jump directly to a specific weapon by hitting the number key that corresponds to the weapon's category. Then, counting down the column, hit the same category number again as many times as needed to match the position of the desired weapon. Hit the Primary Attack key (**Mouse 1** or **Enter**) to begin using that weapon.
3. Customize your keyboard. (See Advanced Controls for customization information.)

Inventory

Flashlight. Standard issue with your protective suit. It must be selected manually when you want to use it by hitting the Toggle Flashlight (F) key. It draws energy, so don't forget to turn it off when you exit a dark area. The flashlight will recharge itself automatically.

Long Jump. You must first acquire a Long Jump Module in order to perform a long jump. Each long jump draws energy; you must wait for a recharge in order to perform another long jump. To perform a long jump, you will need to be moving forward, then duck and quickly hit the Jump (**Space Bar**) key.

Danger Monitors

Your HUD has visual and audio alarms to warn you when the environment is threatening your health. If you see any of the following symbols, act fast:



Poisonous
biohazard



Burning



Drowning



Radiation



Freezing



Acid or corro-
sive chemicals



Electric shock

WEAPONS

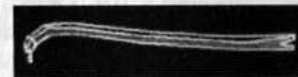
If you like big guns and other destructive devices, you've come to the right place. Half-Life has many different types of weapons—from basic shotguns, pistols, and semi-automatics, to grenade launchers, crossbows, and trip mines. There are even a few experimental toys we think you'll enjoy getting your hands on.

You won't find Half-Life's arsenal spinning around in space. Instead, you'll find items in more realistic locations, such as on gun racks, in the hands of your allies, or on the bodies of your dead enemies. Similarly, ammo will be strewn about on the ground, hidden in crates, and locked inside storage cages. On screen, you'll see your available weapons and ammo. To learn about selecting a particular weapon from your inventory, see page 16 (On-Screen Information).

Some of Half-Life's weapons have an alternate attack mode. Discover which weapons have two uses and experiment with your options. To learn more about selecting primary vs. secondary attack, see page 13 (Keyboard Controls in Controlling the Action section). Your complete arsenal includes real world weapons, experimental weapons, and alien technology. Some weapons can be augmented later in the game to make them even more dangerous. You'll have to venture deep into Half-Life to find out about every weapon. For now, here are three basic ones you'll encounter early in the game:

Crowbar

Half-Life is a complicated place where a crowbar can really come in handy. Things like barrels, boxes, gears, and grates can be pried open, smashed, or otherwise wrenched loose with the crowbar. You'll find critical paths that have been blocked or sealed off. You can dig through such obstacles with your crowbar. You can also use your crowbar to break glass and bludgeon approaching enemies.



Pistol

You acquire this 9mm pistol early in the game. Although it may seem outdated as you acquire more technologically advanced weapons, don't forget about it: it's one of the few weapons that fires under water.

**Sub-Machine gun**

This is one of the first weapons you'll acquire with both primary and secondary attack options. The Navy Seal sub-machine gun has an attached grenade launcher (secondary attack). It has infinite range and fires rapidly. Its primary attack fires 30-round clips of 9mm bullets, while secondary attack launches grenades.



Remember, you can practice using your crowbar and firing the sub-machine gun in Half-Life's Hazard Course.

ENEMIES AND OTHER CHARACTERS

After your experiment with the portal goes awry, the Black Mesa Research Facility will be populated with a wide variety of life forms. Some will attack you on sight, some will leave you alone unless provoked, and some are on your side. Don't be surprised to see packs of creatures working as a team, and don't forget to watch your back, as some monsters can follow you by your scent.

The characters you'll meet in Half-Life fall into one of these categories:

Alien Enemies

There are over a dozen different species. Some work in teams, others are loners. Some will attack without provocation, others would rather avoid conflict. This Barnacle is a stationary monster that attaches itself to ceilings and lies in wait. His passive approach doesn't make him any less deadly. Of course, plenty of Half-Life's alien enemies are quite mobile. You'll see.

**Human Enemies**

Your government has sent in a dangerous and very efficient clean-up crew. Unfortunately, these military personnel don't only want to obliterate aliens, they're trying to permanently silence you and your co-workers, too. This is just one of several different militia types. Be on the lookout for soldiers and trained assassins.

**Human Civilians**

These scientists and security guards were your co-workers before the accident, and can be valuable allies now. You may be able to enlist them to help you. For instance, security guards have access to rooms that you don't. Get them to follow you when needed, and they can unlock doors for you. Hit the Use key (E) to get a civilian to help you. Hit Use again to leave him behind.



MULTIPLAYER

Half-Life's multiplayer features eliminate the hassle of getting connected to the game of your choice. Whether you're new to multiplayer games or a seasoned veteran, you'll appreciate how fast and easy it is to get into the action.

Note: For best results, connect to the Internet before selecting a multiplayer game.

Half-Life's multiplayer selections include:

- Quickstart
- Internet games
- Chat rooms
- LAN Game
- Customize
- Visit WON.net
- Exit

QUICKSTART

Select Quickstart to get online and playing as fast as possible. Once you've logged on to our system, it will automatically check the list of current games and drop you into the best available game.

INTERNET GAMES

Use this feature if you prefer to browse the list of available games. The list reports the speed of the network, which multiplayer map is being played, the game being played (the list will eventually include Half-Life: Team Fortress and Half-Life expansion packs), and the current number of players/maximum number of players allowed in the game.

Connect. To join a game, click on the game name, then click on Connect.

Create game. Host a new game on your computer.

View game info. Check players' names and scores, and review the rules chosen for your game.

Refresh. Get the latest information on the current list of games.

Update. Request a new listing of available games.

Filter. Look at a subset of available games.

Add server. Add a specific game to the list by manually entering its Internet address.

Chat rooms. Visit the Chat rooms to hook up with other players.

Exit. Go back to the main multiplayer menu.

In addition to the choices listed on the screen, you can further manage your list of games by selecting a specific game, then right-clicking your mouse. If you select "add to favorites," an icon will appear next to the game name. Favorites are always shown on your list, even if they are not currently available.



CHAT ROOMS

Chat rooms are a great place to meet friends, taunt opponents or discuss strategy. To make getting started easy, a chat room will be selected for you automatically. Join in the discussion or switch to a different room by selecting List rooms. You can also search for a specific player or room name by clicking the Find button. If you enter the name of a private chat room, you will be asked for a password before you can join the room.

LAN GAME

You can also play multiplayer Half-Life on a LAN (Local Area Network). If you choose LAN game from the menu, Half-Life will automatically check your LAN for active games. You can join a current game, refresh the list of games, create a new game, or add a specific game to the list by manually entering the Internet address.

CUSTOMIZE

Half-Life gives you the ability to customize the appearance of your character in multiplayer games. Select from a list of options for player face, model and skin, or import your own artwork for a truly unique look. Please refer to the Readme.txt file for details on how to create your custom artwork and import it in to Half-Life.

You can also select a "spray paint" image that can be used to mark your territory or announce your clan affiliation. Use the T key to apply your image to walls and other surfaces. Refer to the Readme.txt for information about creating custom spray paint images.

VISIT WON.NET

Connect to the WON.net website to get the latest news on multiplayer Half-Life. You'll also find tips and strategy guides, contests, mod and skin libraries, and links to Half-Life fan sites

WORLDCRAFT 2.0

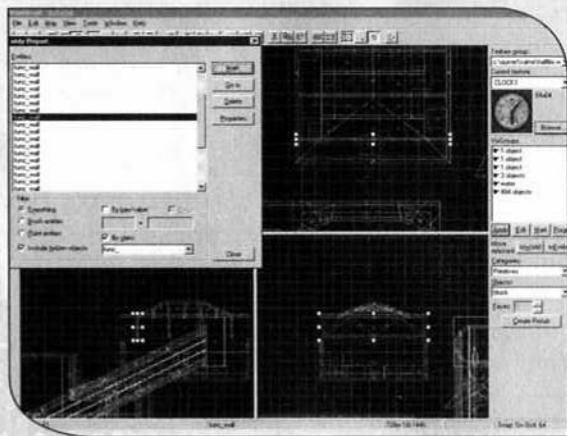
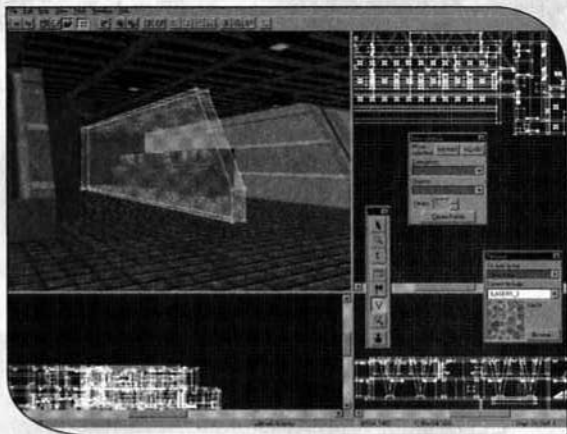
So you've finished Half-Life with all your limbs intact, but you're still hungry for more? Dive into Worldcraft 2.0 (included on your Half-Life disc) and create your own custom-built Half-Life levels. Worldcraft is the most popular and powerful level editor around. Its intuitive interface helps you build your own extraordinary worlds, and you won't need a degree in Computer Science to do it. We used Worldcraft 2.0 to build all of Half-Life's levels.

With Worldcraft, you use a set of basic shapes to get started. Combine, carve, and otherwise customize these shapes to create the architecture you want. You decide what's possible in your new level, including pathways, obstacles, machinery, furniture, and more. Add some lighting. Then populate your level with friends and enemies. Use the Half-Life PreFab factory to make building your level even simpler. Whether you want to create a replica of your garage or a fantastic alien world, you can do it with Worldcraft 2.0.

To give Worldcraft a try, select wc20full.exe from the root directory. Once Worldcraft is installed, refer to Online Help. There, you'll find an Overview of level editing using Worldcraft 2.0, a detailed Reference section, and a step-by-step Tutorial that will have you building your own level in minutes.

There is no technical support offered for Worldcraft 2.0. However, there are several excellent Worldcraft resources on the Internet. Get started at:

<http://www.planetquake.com/worldcraft> or
<http://www.contaminated.net/wavelength/>



CREDITS

VALVE

Ted Backman
 T.K. Backman
 Kelly Bailey
 Yahn Bernier
 Ken Birdwell
 Steve Bond
 Dario Casali
 John Cook
 Greg Coomer
 Wes Cumberland
 John Guthrie
 Mona Lisa Guthrie
 Mike Harrington
 Monica Harrington
 Brett Johnso
 Chuck Jones
 Marc Laidlaw
 Karen Laur
 Randy Lundeen
 Yatzse Mark
 Lisa Mennet
 Gabe Newell
 Dave Riller
 Aaron Stackpole
 Jay Stelly
 Harry Teasley
 Stephen Theodore
 Bill Van Buren
 Robin Walker
 Douglas R. Wood

SIERRA STUDIOS

Senior Vice President
 Scott Lynch

Director of Marketing
 Jim Veevaert

Product Manager
 Doug Lombardi

PR Manager
 Genevieve Ostergard

Creative Services
 Justin Kirby

Product Testing:

Manager
 Gary Stevens

Lead Tester
 Cade Myers

Assistant Lead Tester
 Erik Johnson

Testers
 Andrew Coward
 Dave Lee
 Julie Bazuzi
 Kate Powell
 Ken Eaton
 Matt Eslick
 Miene Lee
 Phil Kuhlmeiy

Voices

Kathy Levin
Harry S. Robins
Mike Shapiro

Package Design

Ray Ueno, TLG
Worldcraft Documentation
Chris "Autolycus" Bokitch

Documentation Writer

Heather Mitchell

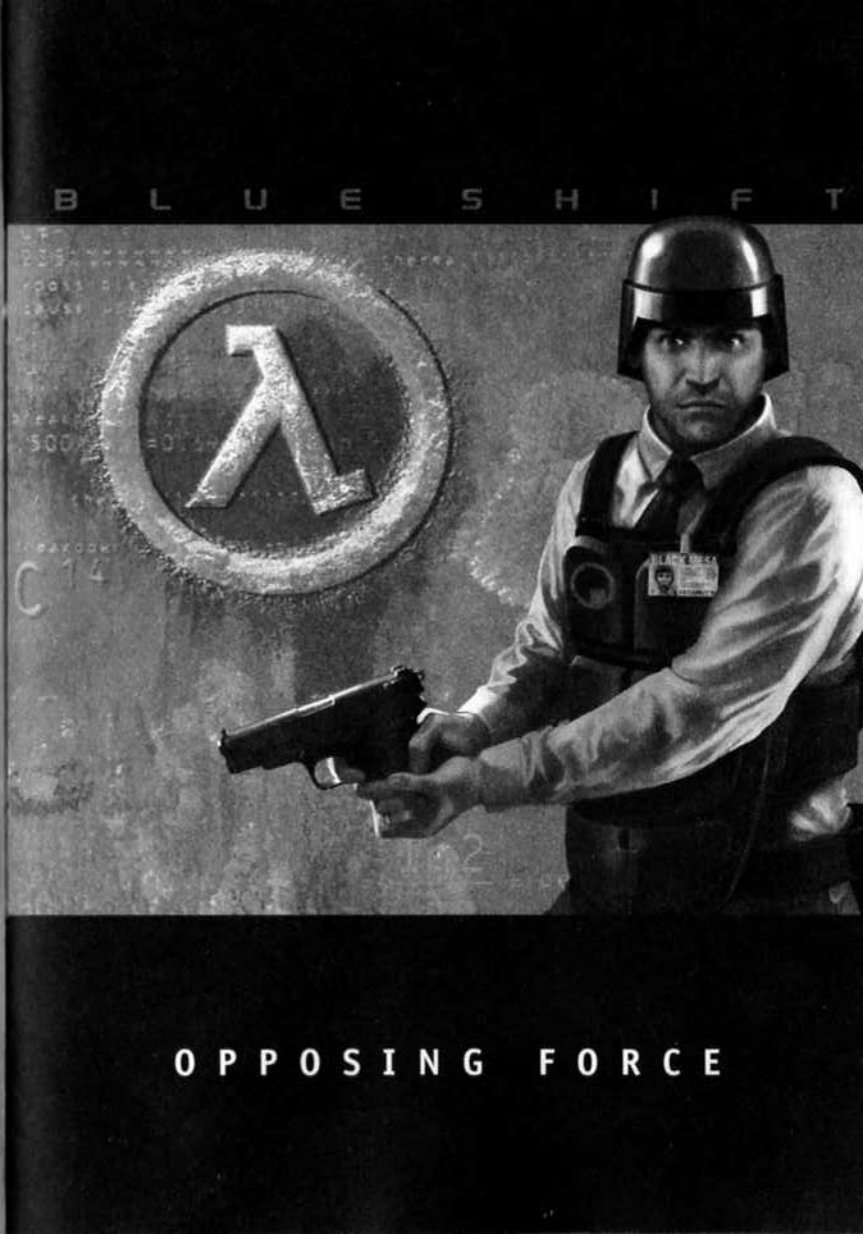
Documentation Designer

Dan Saimo

With thanks to:

Ian Caughley, Eric Twelker,
Christina Kelly, Nathan Dwyer,
Joe Bryant, Stephen Hecht,
Stephen Dennis, Steve
Fluegel, Les Betterly, Russell
Ginns, Ben Morris, Duncan,
Karl Deckard, Louise
Donaldson, Dhabih Eng,
Robert Stanlee, Eddie
Ranchigoda, Koren Buckner,
Michael Abrash, 33
everyone at id Software, and
Joe Kennebec and all our
other hardworking beta
testers.

half life



O P P O S I N G F O R C E

KNOWING YOUR SQUAD



Engineer

The engineer is equipped with the tools necessary to adapt to changing situations in the field. He can even be utilized to cut through sealed doors. To have a torch engineer work for you, lead him to a door that needs cutting and he'll do his job. The engineer is capable of fighting with his sidearm, but care should be taken to keep your engineers alive at all costs. If you lose the only engineers available to cut a passage, you may fail your mission. Also, be careful not to allow the torch soldier's fuel tank to sustain damage. If the canister is pierced, it is likely to explode.

Soldier

The squad assault soldier is equipped with a shotgun, MP-5 sub machinegun or an M-249 light machinegun. Sometimes, soldiers may carry grenades. These soldiers will loyally follow you should you give the order. Simply face the grunt and hit your Use key. You can also command the soldier to guard the area around where he stands. "Use" him again and he'll stay put.

Medic

The medic is trained in first aid and emergency surgery and has the ability to heal wounded soldiers in the field. To get the help of a medic, face him and press and hold your Use key. The medic will

continue working on you as long as the Use key is held or until you are fully healed. Medics do carry limited supplies and if used repeatedly will no longer be able to heal you or your squad. During combat other soldiers may call for a medic and if he can hear them, he'll try to run to their aid. Medics are equipped with a .357 Desert Eagle sidearm for combat, but are best kept safely behind the front lines.

OBJECTS IN COMBAT

Radio

Communication could be considered to be the most important tool of any soldier. Radios are used to allow soldiers in the field to maintain constant communication with each other. The radio is usually a stationary object, therefore it cannot be carried around. But, the usefulness of a radio in the field should never be ignored. Face the radio and hit your Use key to operate it.



Ropes

Ropes can be used to elevate troops to higher ground or safely rappel to lower surfaces. Learning how to use gravity and inertia to swing on ropes allow them to be used in creative ways. Ropes are similar to ladders—to grab one, simply touch it. You can climb up and down by moving forward and back. Press the jump key to leap from the rope. You can swing yourself before letting go of the rope to hurl yourself through the air.



MAINTAINING YOUR EQUIPMENT

Powered Combat Vest (PCV)

Early in the game, you must find and wear the Powered Combat Vest (PCV) your military has provided you with. The vest can be recharged periodically and the greater the charge, the more protective power your vest has. To recharge your vest, seek out a wall-mounted HEV or PCV charger, or pick up batteries along the way.



Night Vision Goggles

The soldier's mask and goggles are used in conjunction with the Powered Vest to provide you with night vision. The goggles use a special rechargeable battery within the vest, so cells used for armor protection are not drained when night vision is in use. The goggles can be toggled on and off and will provide you with visibility in the dark. They are not as useful in bright areas, however, so it is only recommended that you use your goggles only in low light conditions.



EXECUTION OF ARMS

Desert Eagle .357

The Desert Eagle is provided as a standard side-arm for field soldiers. It is therefore best used in close range combat. For assault teams, this weapon is fitted with a laser sight, making it the perfect tool for clearing trip mines and other small targets that require patient pin-point accuracy. The soldier has to be careful when using the laser sighting because it can reveal their position to the enemy. While the Desert Eagle does utilize a clip that allows a higher capacity than revolver type handguns, soldiers shouldn't burden themselves with much reserve ammunition. Never carry more than 36 rounds of .357 ammo.

Class	Pistol (Group 2)
Ammunition	.357 Caliber
Damage	Medium
Capacity	7 Shots per Clip



M-40A1 Sniper Rifle

The Sniper Rifle is used for exactly what the name implies, long range accuracy. The reload time is long and it fires only one shot at a time. But, the rifle is equipped with a high powered scope to enable a soldier to take out a target at distances up to half a mile. For obvious reasons this is not a close combat weapon. But, when used effectively, a sniper rifle can deliver many casualties as well as demoralize surviving enemies.

Class	Rifle (Group 6)
Ammunition	7.62mm NATO
Damage	Very High
Capacity	5 Shots per Clip



M-249 Saw Light Machine Gun

The Squad Assault Weapon (SAW) is the ultimate team combat gun. It can be used from a fall back position as a support weapon for suppressing fire or it can be used by a point soldier to quickly repel a defending force. Extra ammunition should always be kept available as the rate of fire of the M-249 causes most soldiers to burn through their stock seconds into the battle. While firing from a crouched stationary position the SAW is most accurate, but the accuracy rate decreases when fired while in motion.

Class	Machine Gun (Group 6)
Ammunition	5.56mm
Damage	High
Capacity	50 Shots per Belt



MULTIPLAYER

The Oposing Force multiplayer features eliminate the hassle of getting connected to the game of your choice. Whether you're new to multiplayer games or a seasoned veteran, you'll appreciate how fast and easy it is to get into the action.

(Note: For best results, connect to the Internet before selecting a multiplayer game.)

QUICKSTART

Select Quickstart to get online and playing as fast as possible. Once you've logged on to our system, it will automatically check the list of current games and drop you into the best available game.

INTERNET GAMES

Use this feature if you prefer to browse the list of available games. The list reports the speed of the network, which multiplayer map is being played, the name of the game being played, and the current number of players/maximum number allowed in the game.

Connect. To join a game, click on the game name, then click on Connect

Create game. Host a new game on your computer

View game info. Check players' names and scores, and review the rules chosen for your game.

Refresh. Get the latest information on the current list of games.

Update. Request a new listing of available games.

Filter. Look at a subset of available games.

Add server. Add a specific game to the list by manually entering its Internet address.

Chat Room. Visit the Chat rooms to hook up with other players.

Exit. Go back to the main multiplayer menu.

CHAT ROOMS

Chat rooms are a great place to meet friends, taunt opponents or discuss strategy. To make getting started easy, a chat room will be selected for you automatically. Join in the discussion or switch to a different room by selecting List rooms. You can also search for a specific player or room name of a private chat room, you will be asked for a password before you can join the room.

LAN GAME

You can also play multiplayer Oposing Force on a LAN (Local Area Network). If you choose LAN game from the menu, Oposing Force will automatically check your LAN for active games. You can join a current game, refresh the list of games, create a new game, or add a specific game to the list by manually entering the Internet address.

CUSTOMIZE

Opposing Force gives you the ability to customize the appearance of your character in multiplayer games. Select from a list of options for player face, model and skin.

You can also select a "spray paint" image that can be used to mark your territory or announce your clan affiliation. Use the T key to apply your image to walls and other surfaces.

VISIT SIERRA

Connect to the Sierra website (www.sierra.com) to get the latest news on multiplayer games in the Half-Life universe. You'll also find tips and strategy guides, contests, mod and skin libraries and links to Half-Life fan sites.

DEATHMATCH

Opposing Force multiplayer includes a collection of "deathmatch" maps created by some of the most renowned first person action game designers in the industry. You can play deathmatch on a LAN or on the internet. The premise of deathmatch is to kill or be killed. The player that earns the most kills is the winner. The "All Star" designers who created custom arenas for Half-Life: Opposing Force are described below:



Richard "Zdim" Carlson. In the past, Richard has worked on Thief 2 at Looking Glass and American McGee's Alice at Rogue Entertainment. For the "All Star" collection, Richard created "Blue Meanie" (op4_meanie).

Marin "Kandyman" Gazzari. Marin is a well known amateur designer who created the famed "Kndybase" maps for Quake as well contributing to the ZerStorer single player episode for Quake. For the "All Star" collection, Marin created "Kandy One" (op4_kndyone) as well as re-creating the original Kndy Base map for Half-Life: Opposing Force (op4_kbase).

David "Kevlar" Kelvin. When Gearbox contracted David, he was working on Unreal 2 for Legend Entertainment after having contributed multiplayer designs to Monolith's Shogo. Since his work on the "All Star" collection, David joined Grey Matter to work on Return to Castle Wolfenstein. His maps for OpFor include "Disposal" (op4_disposal) and Xen Dance (op4_xendance).

Tom "Paradox" Mustaine. Long ago, Tom contributed to Final Doom for id Software. Since then he's been behind such games as SiN and Heavy Metal: FAKK 2 at Ritual Entertainment. For the "All Star" collection, Tom created "Paradox Park" (op4_park) and "Rubble" (op4_rubble).

Stephen "Reichert" Palmer. Stephen earned a reputation as a strong designer in the Quake era with his "Dark Forest" single player mission. Stephen managed the development of all of the "All Star" maps and contributed "Outpost" (op4_outpost). Since the "All Star" project, Stephen Palmer joined Gearbox full time as a designer.

Eric Reuter. Eric Reuter has a long background of games development, including work on 3dRealms' Shadow Warrior and Epic Megagames' Unreal. For the "All Star" collection, Eric created "Demise" (op4_demise).

The Levelord™. The famous Levelord created award winning games like Duke Nukem 3d, Quake: Scourge of Armagon and others and contributed "The Repentafrag" (op4_repent) to the OpFor "All Star" collection.

Choose these maps when creating a LAN or internet multiplayer game, or choose the classic Half-Life deathmatch levels that appear in the map selection list.

OPPOSING FORCE: CAPTURE THE FLAG

OVERVIEW

The goal in Half-Life: Opposing Force Capture The Flag (OpFor CTF) is simple—capture the opposing team's flag and return it to your flag in your home base. The team who captures the most flags is the winner, but there are many other goals to strive for in OpFor CTF!

JOINING OR CREATING A NEW GAME

To start or join a CTF game, navigate the multiplayer menus (as described on page 34) and choose a game running a CTF map (designated with "op4ctf_" in the map name). When creating a game, do so as if you're creating a deathmatch game, but choose a CTF map.

ENTERING THE GAME

When you first enter a CTF game you will be in spectator mode. You can fly around and explore if you are unfamiliar with the map.

Opposing Force CTF throws players into the classic confrontation of Soldiers vs. Civilians. Therefore, players may join either the Civilian Black Mesa team (Orange) or the Soldier's Opposing Force team (Green). At this menu screen you can choose to join either of these teams specifically, become a spectator or, if you don't care what team you are on and just want to help out the team with the fewest members, you can select the "Auto Assign" choice.

SCORING

The only way to score a capture in OpFor CTF is to return the enemy's flag to your own flag in the flag base. Each flag capture earns one capture point for your team as displayed in the flag HUD. Individual players may also score personal points by defeating the enemy, defending their flag or protecting a friendly flag runner.

THE POWER-UPS

Opposing Force CTF includes five Power-Up items that will give the owner extra enhancements or abilities. When a player is the owner of a Power-Up, a large icon will appear on the middle left side of their HUD showing what Power-Up they currently possess. In addition to this, all of the Power-Up items have audio cues that will play when the Power-Up is in use. These audio cues can be heard by all players, friend or foe, who are standing within earshot of the owner of the Power-Up. To collect a Power-Up, simply touch it. The Power-Up will disappear from the ground and your HUD will update to display that you are now carrying the item. To drop a Power-Up, press the "Throw Power-Up" key (check your key configuration screen from the game menus)



Ammo Power-Up



Jump Power-Up



Death Power-Up



Shield Power-Up



Health Power-Up

END GAME STATISTICS

In addition to rewarding the winning team at the end of each game with a banner that's displayed for all players to see, OpFor CTF keeps track of many statistics that are reported in the end game menus. Also, when the end game menu is active, you can toggle between the standard scoreboard and the statistics screen.



CREDITS**GEARBOX****Production/Direction**

Randy Pitchford

Art Direction

Brian Martel

Art, Models and Animation

Stephen Bahl

Brian Martel

Landon Montgomery

Lead Level Designer

Rob Heironimus

Level Designers

Matt Armstrong

Rob Heironimus

David Mertz

Randy Pitchford

Mike Wardwell

Level Designers**Opposing Force Online**

Stephen Palmer

Brian Hess

Programming

Patrick Deupree

John Faulkenbury

Steve Jones

Sean Reardon

Installation Programming

Christopher McArthur

Sound Effects

Rob Heironimus

Stephen Bahl

Writing

Rob Heironimus

David Mertz

Randy Pitchford

Kristy Junio

Manual

Kristy Junio

Eli Luna

Brian Martel

Landon Montgomery

Randy Pitchford

Manual Layout

Eli Luna

Voices

Jon St. John

Kathy Levin

Mike Shapiro

Harry S. Robbins

Original Music

Stephen Bahl

Chris Jensen

Administration

Stephen Bahl

Landon Montgomery

SIERRA STUDIOS**President**

Dave Grenewetzki

Sr. Vice President

J. Mark Hood

Sr. Producer

Jeff Pobst

Assistant Producer

Bernadette Pryor

VP Marketing

Jim Veevaert

Director of Marketing:

Lee Rossini

Koren Buckner

Brand Manager

Charles Holtzclaw

Marketing Assistant

Michael Cowan

Director of QA

Gary Stevens

QA Supervisor

Ken Eaton

QA Lead Tester

Jim Gentle

QA Tester

Chris Bourdon

Jared Guthrie

Erinn Hamilton

Rick Gusa

Web Editor

Guy Welch

Director of PR

Genevieve Ostergard

PR Associate Manager

Kellie Cosner

Creative Services

Mike Rodgers

Orlena Yeung

VALVE

Ted Backman

Kelly Bailey

Jeff Ballinger

Aaron Barber

Yahn Bernier

Ken Birdwell

Derrick Birum

Steve Bond

Charlie Brown

Dario Casali

Francis Chu

John Cook

Daniel Cross

Mike Dunkle

Mike Dussault

Rick Ellis

Dhabih Eng

Bill Fletcher

Pat Goodwin

Jaime Guthrie

John Guthrie
 Brian Jacobson
 Erik Johnson
 Chuck Jones
 Paul Jones
 Marc Laidlaw
 Jeff Lane
 Chia Chin Lee
 Lars Liden
 Doug Lombardi
 Randy Lundeen
 Scott Lynch
 Gary McTaggart
 Chris Newcombe
 Gabe Newell
 Dave Riller
 David Sawyer
 Eric Smith
 David Speyrer
 Jay Stelly
 Harry E. Teasley
 Steve Theodore
 Mikel Thompson
 Bill Van Buren
 Robin Walker
 Josh Weier
 Doug Wood

Gearbox would like to give

Special Thanks To:

Richard Carlson
 Kellie Cosner
 Amanda Dunn
 Marin Gazzari
 David Kelvin

Joe Kennebec
 Doug Lombardi
 Gabe Newell
 Frank Nuccio
 Tom Mustaine
 Genevieve Ostergard
 Jeff Pobst
 Dustin Porter
 Eric Reuter
 Danny Richardson
 David Sawyer
 Rob Selitto
 John Shaffstall
 Richard Gray
 Sierra Studios QA
 Valve Software
 Captivation Digital
 Laboratories

HALF-LIFE
 COUNTER-STRIKE



COUNTER STRIKE

OVERVIEW

Counter-Strike is a team-based game built on Valve's Half-Life technology. It recreates encounters that trained terrorist and counter-terrorist units experience. Players join either a terrorist or a counter-terrorist force and engage in strategic scenarios.

These include:

- Hostage Rescue**, where the counter-terrorists must rescue hostages
- Bomb/Defuse**, where terrorists must plant a bomb in a critical area and counter-terrorists must defuse the bomb.
- Escape**, where the terrorists must escape from the counter-terrorists.
- Assassination**, where the VIP must be escorted by the counter-terrorists to an escape point.

Weapons and other pieces of equipment are available at a cost, and players can earn money in a variety of different ways while playing the game. Players may also lose money for inappropriate actions (e.g. killing a hostage or a teammate.)

After installing Counter-Strike, you will want to familiarize yourself with the mapping of the game controls on your keyboard/mouse. Choose "configuration-controls" and look over the default keyboard configuration. To change any of the default mappings, double-click on the key/button field in the window. You will then be able to enter your desired key for that function. (A warning: if the new key/button was previously mapped to another function, you will need to select a new key for that function, as it will no longer have a key mapping). If you have no previous experience with Half-Life: Counterstrike, it is strongly recommended that you play the included tutorial. See the "Controls" section on page 53, for a description of what each game control does.

JOINING A GAME

Once you've selected your control configuration and are ready to join a game, click on the "Play CS" option located on the main menu. From the "Play CS" menu, you will find several multiplayer options that make it easy to connect to the game of your choice. It is recommended that you connect to the Internet before selecting the multiplayer option.

From the "Play CS" menu you will find the following options:

- Quickstart
- Internet Games
- Chat Room
- LAN Game
- Customize
- Visit CS.net
- Exit

QUICKSTART

Select Quickstart to get online and playing as fast as possible. Once logged in, the automated system will check the list of available games and drop you into the game with the best connection speed.

INTERNET GAMES

Use this feature if you prefer to browse the list of available games. The list reports the speed of the network, the current map in play, and the current number of players/maximum number of players allowed in the game.

Connect. To join a game, click on the game name, then click on Connect.

Create game. Host a new game on your computer.

View game info. Check players' names and scores and review the configuration for the game.

Refresh. Update the current list of games with the latest information.

Update. Request a new listing of available games.

Filter. Look at a subset of available games.

Add server. Add a specific game to the list by manually entering its Internet address.

Chat rooms. Visit the chat rooms to discuss games and find other players.

Exit. Go back to the main multiplayer menu.

Note: It's important to adjust your "Internet Connection Speed" in the drop down window located on the top right corner of this menu.

CHAT ROOMS

Chat rooms are a great place to meet friends, taunt opponents or discuss strategy. Upon entering, the automated system will choose a chat room for you. Join in the discussion or switch to a different room by selecting List Rooms. You can also search for a specific player or room name by clicking the Find button. If you enter the name of a private chat room, you will be asked for a password before you can join the room.

LAN GAME

You can also play multiplayer games on a LAN (Local Area Network). If you choose LAN game from the menu, Counter-Strike will automatically check your LAN for active games. You can join a current game, refresh the list of games, create a new game, or add a specific game to the list by manually entering the Internet address.

CUSTOMIZE

From this screen you can assign your on-screen player identity.

THE SCENARIOS

Hostage Rescue

As a terrorist, your role in a hostage rescue level is to prevent counter-terrorists (CTs) from leading the hostages from where they are being held to the hostage rescue zone. Terrorists win hostage rescue rounds by eliminating the counter-terrorist force while preventing them from rescuing hostages. CTs win a round by finding the hostages and leading the living hostages to freedom. CTs can get the attention of a hostage by moving near him then pressing their "Use" key (see Controls, Use, page 55). The hostage will now follow the CT back to the rescue zone. If a CT wants the hostage to stop following, they need to press "Use" again and the hostage will stay put. Sometimes when you have a group of hostages following you, they may block you into an area; you can push them out of the way by simply walking into them. CTs can also win a round by eliminating the terrorists.

Bomb/Defuse

In a bomb/defuse map, the goal of the terrorist is to plant a C4 bomb in the designated area then prevent the CTs from defusing the bomb. Players must remember to stay well clear of the bomb when it explodes, as it has a large and deadly blast radius. The bomb is randomly assigned to a terrorist at the start of the round. Team members can identify the bomb carrier by the backpack they are wearing and the player with the bomb will see an icon on their Heads Up Display (see HUD, Bomb, page 59). To plant the bomb, the carrier must be in the vicinity of the bombing target. While having the bomb as their currently selected item, the player must then press and hold their fire key (see Controls, Fire, page 55) for three seconds for the bomb to be planted. The bomb will go off after a set period of time has passed (45 seconds by default). The level is won by the terrorists when the bomb explodes (maximum payoff) or if the CT team is eliminated (smaller payoff). CTs can win a defuse map in two ways: by defusing the bomb or by eliminating

the Terrorists (if the Terrorists managed to plant the bomb before being eliminated, CTs must still defuse the bomb to win the round). To defuse the bomb, CTs must stand near the bomb, target it, then press and hold their "Use" key until the bomb is defused. Buying a defuse kit will halve the time required to defuse a bomb.

Escape

The terrorist team starts out in a fortified location and must "escape" to one of the pre-defined escape points. The CTs team must exterminate them before they can escape. The Terrorists win the round once 50% of the team has successfully escaped. They can also break into the armory to steal weapons, or just get out of there. The two teams will switch roles after every eight rounds of play. Both sides can also win the scenario if they manage to wipe the opposition team out.

Assassination

One member of the CT team will serve as the VIP. The object is to get the VIP safely to the pre-defined escape points. If he dies, the CTs lose the round. If he makes it safely, the CTs win. The VIP has a unique skin, only carries a knife and pistol, and has ample body armor. The terrorist job is to assassinate the VIP, but with the other CTs guarding the VIP, it is never an easy task. Certain weapons cannot be purchased by each team in this gameplay scenario, and these will be grayed out on the weapon selection screen.

MONEY

Various events in the course of a Counter-Strike game can earn you money (to a maximum of \$16,000) or cost you money. This money can be used to buy better equipment. The following is a summary of these events and their associated costs:

<i>Action</i>	<i>Payoff / Fine</i>
Rescuing a Hostage	\$1,000 for individual, \$150 for teammates (awarded at end of round)
Kill a Hostage	-\$1,500 for individual
"Use" a Hostage	\$150 for individual, \$100 for teammates
Kill Opponent	\$300 for individual
Kill Teammate	-\$3,300 for individual
Terrorists Win by Bombing Target	\$2,750 for team members
Win by Elimination Hostage map	\$2,000 for team members
Win by Elimination Bomb map	\$2,500 for team members
CTs Defuse Bomb	\$2,750 for team members
CTs Win by Rescuing Hostages	\$2,000 for team members + Hostage bonuses
Surviving Hostage Bonus	\$150 per hostage for team members
Hostages Rescued Bonus	\$250 per hostage for CT team members
Either Team Loses Round	\$1,400 for team members
Either Team Loses over 2 Consecutive Rounds	\$1,400 + \$500 per round over 2 (to maximum \$2,900) for team members

Money can be spent on weapons whenever the player is standing in a buy zone. This is indicated by the presence of the buy icon on the Heads Up Display (see Heads Up Display, page 58).

GAME FLOW

Prior to the round starting, there is a variable grace period (the server can change this, but it defaults to five seconds) during which players cannot move but may buy equipment and weapons. Each round of Counter-Strike lasts for five minutes by default. If neither team has won after this time the round is considered a win depending on the scenario:

Hostage. If after the round ends and there is at least one player left on both teams, and not all the hostages have been rescued then the game will be a win for the terrorists.

Bomb/Defuse. If the round ends, with the bomb having not blown up a target, and there is still at least one player left on both sides the CTs team will win.

Escape. If the round ends, with at least one player alive on both teams, and fewer than 50% of the terrorists have escaped, the CT's team will win.

Assassination. If the round ends, with players left on both teams and the VIP has not reached the escape point, the terrorists win.

When a player is killed during a round they enter an observer mode until the next round. While in observer mode, they can fly around the level and watch the action. There are three types of observer modes. The first is **Free-Look** mode, where the player can freely fly around the level unobstructed by anything. The second is **locked chasescam**. While in locked chasescam you're locked behind the player you are observing. The third is **Free Chase** chasescam, in this mode you can freely swing the camera around the player you are observing. While in the observer modes you can use the jump key (see Controls, Jump, page 54), to switch between the three modes and the fire button (see Controls, Fire, page 55), to switch from one player to the next. If a player joins into a game when a round is already in progress, they are immediately placed into observer mode until the current round ends.

CONTROLS

The following is a list of the player controls, their default keyboard/mouse mapping and a description of what each does.

<i>Function</i>	<i>Default Key Mapping</i>	<i>Notes</i>
Buy Menu	B	The main point of entry for the buying menus
Buy Equipment Menu (Optional)	O	Takes you directly to the equipment purchase menu
Buy Primary Ammo (Optional)	,	Automatically buys a single clip of ammo for your primary weapon
Buy Secondary Ammo (Optional)	.	Automatically buys a single clip of ammo for your secondary weapon
Select Team	M	Change sides. You will die until next round starts
Standard Radio Messages	Z	Brings up a list of radio commands. Press the corresponding number to utter the message
Group Radio Messages	X	Brings up a list of radio commands. Press the corresponding number to utter the message
Report Radio Messages	C	Brings up a list of radio commands. Press the corresponding number to utter the message

<i>Function</i>	<i>Default Key Mapping</i>	<i>Notes</i>
Move Forward	W or UP ARROW	
Move Back	S or DOWN ARROW	
Turn Left	Mouse X AXIS or LEFT ARROW	Unnecessary if using Mouse for looking
Turn Right	Mouse X AXIS or RIGHT ARROW	Unnecessary if using Mouse for looking
Move Left (Strafe)	A	
Move Right (Strafe)	D	
Jump	SPACE	Cycles through the three observer modes
Duck	CTRL	
Swim Up	'	Unnecessary if using Mouse
Swim Down	/	Unnecessary if using Mouse
Look Up	Mouse X AXIS or PGUP	
Look Down	Mouse X AXIS or PGDN	
Reset View	END	Unnecessary if using Mouse
Strafe Modifier	ALT	Optional
Mouse Look	;	Unnecessary if using Mouse

<i>Function</i>	<i>Default Key Mapping</i>	<i>Notes</i>
Keyboard Look	INS	Unnecessary if using Mouse
Fire	MOUSE BUTTON 1 or ENTER	Fire Weapon, Throw Grenade, Plant C4, Will jump to next player in observer mode
Special Weapon Function	MOUSE BUTTON 2	Invokes your weapon's secondary function, i.e. burst fire, sniper scope etc
Reload Weapon	R	Tops off your clip... good idea before joining a firefight
Drop Current Weapon	G	Drops the currently held weapon
Use	E	Press a button, get hostage to follow you, defuse bomb, etc
Walk	SHIFT	Move forward at slower, quieter pace (important for stealth)
Night vision goggles	N	Toggles the Night vision on/off (must be bought via equipment menu first)
Flashlight	F	Toggles flashlight on/off
Spray Logo	T	Pick logos in Customize Menu
Menu Item 0	0	
Menu Item 1	1	
Menu Item 2	2	

<i>Function</i>	<i>Default Key Mapping</i>	<i>Notes</i>
Menu Item 3	3	
Menu Item 4	4	
Menu Item 5	5	
Menu Item 6	6	
Menu Item 7	7	
Menu Item 8	8	
Menu Item 9	9	
Previous Weapon	MOUSE WHEEL UP or [
Next Weapon	MOUSE WHEEL DOWN or]	
Last Used Weapon	Q	
Display Multiplayer Scores	TAB	Shows scores, teams, wins frags, status, bomb carrier, etc
Recap Mission Briefing	I	Press Jump, Fire or Special Weapon function to make the mission briefing go away
Chat Message	Y	Broadcast message to all
Team Chat Message	U	Broadcast message to team
Take Screen Shot	F5	
Quit	Not assigned by default	

WEAPONS & EQUIPMENT

Weapons are divided into three categories: Primary (Rifles, Shotguns, Sub-Machine Guns and Machine Guns), Secondary (Handguns) and Melee (Knife). Equipment such as hand-grenades and defusing kits has its own category. Players may only carry one item at a time in each of these categories except equipment, which can have several items at once. Some weapons may also have a special action (see Controls, Special Weapon Function, page 55).



HEADS UP DISPLAY (HUD)

While playing you will always see the HUD. On the HUD you'll see:

TOP OF HUD (left to right)



RADAR. Useful for seeing the approximate location of your teammates. You will see five symbols on the radar:

- **A purple dot** = teammate.
- **A red dot** = Location of the VIP (shown only to CT's in assassination scenarios) /Bomb carrier (shown to only to terrorists in bomb/defuse scenarios).
- **A T shape** = Indicates your teammate is a level above you.
- **An upside down T shape** = Indicates your teammate is a level below you.
- **A yellow square** = A teammate has activated a radio command.

WEAPON/EQUIPMENT SELECTION MENU. Will show the weapon you select. Upon selecting a weapon the menu will flash for only five seconds to show the weapon you select then disappear. Default keys for the weapons and equipment are:

1. Primary weapon (large guns)
2. Secondary weapon (pistols)
3. Knife
4. Grenades
5. Bomb (available only to the terrorist who carries the bomb in the Bomb/Diffuse scenario)

FLASHLIGHT. All Counter-Strike players are equipped with a flashlight. Toggle it on and off by pressing the flashlight key (see Controls, flashlight, page 55). When your flashlight is on, other players will see the area surrounding you glowing brightly.

BOTTOM OF HUD (left to right)

HEALTH METER. You will start a round with 100 units of health, and die when your health reaches zero.

ARMOR LEVEL. Two types of armor can be purchased; a vest or a vest paired with a helmet. The helmet is moderately affective at reducing damage when hit in the head.

ROUND TIMER. Counts down from five minutes (the server can change this, but it defaults to five minutes). A round ends when either the objective of the round has been completed, i.e. in Bomb/defuse scenarios the bomb has blown, or if all the players on a team have been eliminated. If the timer reaches zero with neither the objective being completed nor all players on one team having been eliminated then, depending on the scenario, one side will automatically win. (See Game Flow, page 52).

AMMO INDICATOR. Your current ammo count is displayed in the lower right hand area, under the cash display. Ammo is broken up into two separate counts: the number of shots in your clip, and the

number in your inventory. When your clip is exhausted, it is automatically reloaded for you. If you would like to reload your clip before it is empty press your reload key. (see Controls, Reload Weapon, page 55).

CASH. Your current account balance. Additions to the cash balance are briefly shown above the balance in green numbers. Fines and penalties are shown in red.

MIDDLE LEFT OF HUD

Depending on your location you will not see all of these icons on the HUD. All of these icons are colored green:

BASKET (Buy Zone). This means you're in your "buy zone." Here, pressing the buy key (default B) will give you access to the buy menu where you will be able to buy weapons, ammo, and equipment.

R (Hostage rescue Zone). When a counter-terrorist is at the spot where hostages must be delivered, this icon will appear.

V (VIP escape point). When a counter-terrorist or VIP is at the spot where the VIP must reach to escape, this icon will appear.

E (Terrorist escape point). When a terrorist is at the spot where the terrorist can "escape," this icon will appear.

BOMB. This will only be seen by a terrorist who is carrying the bomb in the bomb/defuse scenario. When the bomb carrier is within the bomb delivery zone, this icon will flash.

DEFUSE KIT. The icon looking like a pair of wirecutters, will appear on the HUD of any CT player that has bought a Defuse Kit.

SCOREBOARD. Seen when pressing the score key (default key, Tab). The scoreboard lists all the latest game statistics and player status. Information on the scorecard tells you who is dead or alive, who is carrying the bomb, player kills and deaths, latency and team scores.

HINTS

Sound, Pros, and Cons

Stealth is vitally important in Counter-Strike. When a player runs at full tilt (which is the default), their footsteps can be heard. To prevent this, use the walk key (see Controls, Walk, page 55) when trying to avoid detection. Also be wary of doors, ladders and elevators. These will often emit a sound that may give you or your enemies' position away.

Life is Precious

Counter-Strike strives for realism. Running into a firefight all gung-ho will generally get you killed. The player can only sustain a few bullet shots before dying, depending on the type of gun (ammunition, actually) being shot, and the condition and presence of Kevlar. There are also one hit kills in CS. Most guns can kill a player in one shot if they connect with the head. Savvy CS players, will take cover as often as possible and use their surroundings to their advantage. Working with your teammates to bring the enemy down is encouraged and necessary to beat the other team. Keep in mind, you only get one life per round in CS. If you die, you will be put into Observer mode until the round is over.

Know Your Gun

Counter-Strike has realistically modeled weaponry. If you run and fire at the same time, your accuracy will be horrible (changes with different guns). Standing still increases accuracy and crouching is even better. Also be aware of the gun's recoil. Holding down the trigger isn't as effective as short quick bursts. It is also important to know that all rifles can shoot through walls to some extent.

Map Voting System

There is now a way for players to vote for maps. Players can type "listmaps" to see the maps available to vote on, and then they

type "votemap X" where X is the corresponding number of the map. Only after a certain number of players have voted for the map will the server change the map.

Note: Server admins who want to add new maps must also add an entry into *mapcycle.txt*, that allows players to vote on any new maps.



WEB LINKS

www.counter-strike.net

The official web site, and home of Counter-Strike. Check here for the latest news from the team.

csnation.counter-strike.net

For the latest news in the CS community.

skins.counter-strike.net

Counter-Strike Skins Site. OCSS has all the newest user made skins and weapon model replacements.

server.counter-strike.net

Counter-Strike Server. Full CS server commands and variables. The complete server op source.

anarchy.counter-strike.net

Anarchy Mapping & Design. Anarchy and his team have you covered with mapping help.

clanworld.counter-strike.net

Counter-Strike Clanworld. Get all the latest information on CS clans.

guides.barrysworld.com/cs/

Guide to Counter-Strike. A detailed guide to Counter-Strike, covering every aspect.

CREDITS**THE COUNTER-STRIKE
TEAM**

**Lead Programmer/Modeler/
Animator/Skinner**
Minh Le

**Webmaster/
Public Relations/Business**
Jess Cliffe

Texture Artist
Chris Ashton

Linux Engineer
Leon Hartwig

Texture Artist
Ido Magal

Mappers
Andrew Aumann
Chris Ashton
Justin DeJong
David Johnston
Alex Malinov
Jo Bieg
Stephen Superville
Mike Rosser
Alexander Manilov
Chris Auty
Jaison Green
Glen Cooper

VALVE

Managing Director
Gabe Newell

C.O.O.
Scott Lynch

Production
Doug Lombardi
Erik Johnson

Programming
Yahn Bernier
Robin Walker
Eric Smith

Modeling
Chuck Jones
Steve Theodore

SIERRA STUDIOS

Sr. Vice President
J. Mark Hood

Producer
Jeff Pobst

Asst. Producer
Bernadette Pryor

VP Marketing
Jim Veevaert

Director of Marketing
Koren Buckner

Brand Manager
Dan Amdur

Marketing Producer
Glenn Oliver

Web Producer
Guy Welch

European Brand Manager
Djamil Kamal

Senior PR Manager
Genevieve Ostergard

SR Manager
Hillary Crowley

PR Coordinator
Kelly Hobin

Creative Services
Mike Rodgers
Orlena Yeung

Manual Graphic Design
Cheryl Sweeney

QA Manager
Gary Stevens

QA Supervisor
Ken Eaton

QA Test Lead
Marc Nagel

QA Testers
Danny Harrison
Niko Simonson
John Pulling
Torsten Reinl

**Corporate Product
Certification Rep.**
Chris Slack

Technical Support Manager
Brian Moss

**Havas Localization
Producer**
Barry Kehoe

ROW Producer
Warren Wright

Special Thanks
Maverick Developments
Barking Dog Studios

CONTACTING SIERRA

Customer Service, Support, and Sales

United States

U.S.A. Sales Phone: (800) 757-7707
Hours: 24 hours a day, 7 days a week

International Sales: (425) 746-5771
Hours: Monday-Friday 8 AM to 4 PM PST
FAX: (916) 939-1010

Sierra Direct
P O Box 629001
El Dorado Hills, CA 95762-9972

Email: customer.support@sierra.com
<http://www.sierra.com>

United Kingdom

Vivendi Universal Interactive Publishing UK Ltd.
Main: (0118) 920-9111
Monday-Friday, 9:00 a.m. - 5:00 p.m.
Fax: (0118) 987-5603

Disk/CD replacements in the U.K. are £6.00, or £7.00 outside the UK. Add "ATTN.: Returns."
2 Beacontree Plaza,
Gillette Way,
Reading, Berkshire
RG2 0BS United Kingdom

France

Vivendi Universal Interactive Publishing France
32, Av de l'Europe
Bât Energy 1 (2e étage)
78 140 VELIZY-Villacoubaly
France

Téléphone: 01-30-67-90-50
Lundi au Jeudi de 10h à 19h
Vendredi de 10h à 18h
Fax: 01-30-67-90-65

Germany

Vivendi Universal Interactive Publishing Deutschland GmbH.
Tel: (0) 6103-99-40-40
Montag bis Freitag von 10h - 19Uhr
Fax: (0) 6103-99-40-35

Paul-Ehrlich-Straße la
63225 Langen
Deutschland

On-Line Sales

CompuServe United Kingdom: GO UKSIERRA
CompuServe France: GO FRSIERRA
Internet USA: <http://www.sierra.com>
Internet United Kingdom: <http://www.sierra-online.co.uk>
Internet France: <http://www.sierra.fr>
Internet Germany: <http://www.sierra.de>

Disk and or Manual Replacement:

Product Returns*:
Vivendi Universal Interactive Publishing International
Sierra On-Line Returns
4247 S. Minnewawa Ave.
Fresno, CA 93725

Vivendi Universal Interactive Publishing International
Sierra On-Line CD/Doco Replacement
4247 S. Minnewawa Ave.
Fresno, CA 93725

NOTE: To replace your CD(s) please send only the damaged CD and copy of your dated Receipt, if less then 90 days. After 90 days please include a \$10.00 handling fee along with the CD(s). For Documentation replacement,

please include a \$5.00 handling fee and a photocopy ONLY of either your disk or CD. Payment should be made at the time of your request. Sorry, no credit cards.

* Returns to this address valid in North America only.

Technical Support

North America

Sierra On-Line offers a 24-hour automated technical support line with recorded answers to the most frequently asked technical questions. To access this service, call (425) 644-4343, and follow the recorded instructions to find your specific topic and resolve the issue. If this fails to solve your problem, you may still write, or fax us with your questions, or contact us via our web site.

Sierra Entertainment
Technical Support
4247 South Minnewawa Avenue
Fresno, CA 93725

Main: (425) 649-8033
Monday-Friday, 8:00 a.m. - 4:45 p.m. PST
Fax: (320) 258-0755

<http://www.sierra.com>
support@sierra.com

United Kingdom

Vivendi Universal Interactive Publishing UK Ltd. offers a 24-hour Automated Technical Support line with recorded answers to the most frequently asked technical questions. To access this service, call (0118) 920-9111, and follow the recorded instructions to find your specific topic and resolve the issue. If this fails to solve your problem, you may still write, or fax us with your questions or contact us via our Internet or CompuServe sites.

Vivendi Universal Interactive Publishing UK Ltd.
2 Beacontree Plaza,
Gillette Way,
Reading, Berkshire
RG2 0BS United Kingdom

Main: (0118) 920-9111
Monday-Friday, 9:00 a.m. - 5:00 p.m.
Fax: (0118) 987-5603

<http://www.sierra-online.co.uk>

France

Vivendi Universal Interactive Publishing France
32, Av de l'Europe
Bât Energy 1 (2e étage)
78 140 VELIZY-Villacoublay
France

Téléphone: 01-30-67-90-50
Lundi au Jeudi de 10h à 19h
Vendredi de 10h à 18h
Fax: 01 30 67 90 65

<http://www.sierra.fr>

Germany

Vivendi Universal Interactive Publishing Deutschland GmbH.
Technischer Kundendienst
Paul-Ehrlich-Straße 1a
63225 Langen
Deutschland
Tel: (0) 6103-99-40-40
Montag bis Freitag von 10 - 19Uhr
Fax: (0) 6103-99-40-35
Mailbox: (0) 6103-99-40-35

<http://www.sierra.de>

Spain

Vivendi Universal Interactive Publishing España
 NUESTRA SEÑORA DE VALVERDE Nº 23
 28034 MADRID
 Spain

Tech Support Teléfono: 91 735 24 37

Soporte técnico de lunes a Viernes
 de 09:30 a 15:00 y de 16:00 a 18:30

www.havasinteractive.es

Soporte Técnico: soporte@havasinteractive.es
 Comercial: comercial@havasinteractive.es

Italy

Vivendi Universal Interactive Publishing Italia spa
 Contattare il vostro distributore.

Sierra Warranty & Legal Information

Sierra's end user license agreement, limited warranty and return policy is set forth in the EULA.txt, found on the CD, and is also available during the install of the product.

Copyright (2002 Sierra On-Line, Inc.)



© 1998-2002 Sierra Entertainment, Inc. or Valve, L.L.C. All Rights Reserved. Valve, the Valve Logo, Half-Life, the Lambda Logo, Counter Strike, and Opposing Force are trademarks and/or registered trademarks of Valve, L.L.C. Gearbox and the Gearbox logo are trademarks of Gearbox Software, L.L.C. This product contains software technology licensed from id Software, Inc. ("id Technology"). id Technology® 1996-1998 id Software, Inc. All Rights Reserved. Direct3D and Windows are registered trademarks of Microsoft Corporation. Sierra as a trademark of Sierra Entertainment Inc. Pentium is a registered trademark of Intel Corporation. ® designates trademarks registered in the U.S.A., which may be registered in certain other countries.

contact sierra

NOTES



uranium-238
11.43 years
radioactive
500 years

Find out more at www.sierra.com



Call 1-800-757-7707 or visit your local retailer today. See our Web site at www.sierra.com.

© 1998-2002 Sierra Entertainment, Inc. or Valve, L.L.C. All Rights Reserved. Valve, the Valve Logo, Half-Life, the Lambda Logo, Counter-Strike, Team Fortress and Opposing Force are trademarks and/or registered trademarks of Valve, L.L.C. Trademarks for Gearbox and the Gearbox logo are pending. This product contains software technology licensed from id Software, Inc. ("id Technology"), id Technology™ 1996-1998 id Software, Inc. All Rights Reserved. Direct3D and Windows are registered trademarks of Microsoft Corporation. Sierra as a trademark of Sierra Entertainment Inc. Pentium is a registered trademark of Intel Corporation. ©2001 AT&T. All Rights Reserved. AT&T WorldNet™ Service is a registered service mark of AT&T Corporation. Any other trademarks are the properties of their respective owners. ® designates trademarks registered in the U.S.A., which may be registered in certain other countries. *Awarded Game of the Year by numerous publications from 11/98 - 5/99. **Game Spy as of 3/20/01.