

FEAR™

FIRST ENCOUNTER ASSAULT RECON

F.E.A.R. Controls

Movement

Forward.....	W
Backward.....	S
Step Left.....	A
Step Right.....	D
Turn Left.....	Left Arrow
Turn Right.....	Right Arrow
Sidestep.....	Right Ctrl
Walk.....	Unassigned
Jump.....	Space Bar
Crouch.....	C
Lean left.....	Q
Lean right.....	E
Toggle walk.....	Unassigned
Toggle crouch.....	Unassigned

Interaction

Fire: Mouse Button.....	o (Left mouse click)
Melee: Mouse Button.....	1 (Right mouse click)
Throw grenade.....	G
Use.....	F
Reload.....	R
Aim/Zoom.....	Shift
SlowMo.....	Left Ctrl
Flashlight.....	X

Inventory

Weapon slot 1.....	1
Weapon slot 2.....	2
Weapon slot 3.....	3
Next weapon.....	Mouse Wheel Down
Previous weapon.....	Mouse Wheel Up
Last weapon.....	Unassigned
Select frag grenade.....	4
Select proximity grenade...	5
Select remote bomb.....	6
Next grenade.....	Unassigned
Use medkit.....	
Holster weapon.....	H

Status

Scores/Refresh HUD.....	Tab
Mission status.....	M
Talk.....	T
Team say.....	Y
Team radio.....	V
Look up.....	Up Arrow
Look down.....	Center
View.....	End
Quick save.....	F5 (unmappable)
Quick load.....	F9 (unmappable)

FEAR™

FIRST ENCOUNTER ASSAULT RECON

"THE PC'S TOP
SHOOTER"

-PC GAMER



© 2005 Monolith Productions, Inc. All rights reserved. Published by Vivendi Universal Games, Inc. under license from Monolith Productions, Inc. F.E.A.R., Vivendi Universal Games and the Vivendi Universal Games logo are trademarks of Vivendi Universal Games, Inc. Sierra and the Sierra logo are registered trademarks or trademarks of Sierra Entertainment, Inc. in the U.S. and/or other countries. MONOLITH, MONOLITH LOGO, WB SHIELD, TM & © Warner Bros. Entertainment Inc. All other copyrights and trademarks are the property of their respective owners.

7209212

**GET INSIDE!
Join Now!**

Register Your Game Today!

- Free tips, tricks, demos, trailers, and more!
- Receive free technical and customer support.
- Be the first to know about beta tests, tournaments, game testing opportunities, and other events.
- Plus, stay informed on the latest VU Games news, updates, discounts & more!

**Go to
<http://reg.vugames.com>
Now!**

© 2005 Monolith Productions, Inc. All rights reserved. Published by Vivendi Universal Games, Inc. under license from Monolith Productions, Inc. F.E.A.R., Vivendi Universal Games and the Vivendi Universal Games logo are trademarks of Vivendi Universal Games, Inc. Sierra and the Sierra logo are registered trademarks or trademarks of Sierra Entertainment, Inc. in the U.S. and/or other countries. MONOLITH and the Monolith logo are trademarks of Monolith Productions, Inc. GameSpy and the "Powered by GameSpy" design are trademarks of GameSpy Industries, Inc. Uses Havok™; © Copyright 1999-2002 Havok.com Inc. (and its Licensors). All Rights Reserved. See www.havok.com for details. MPEG Layer-3 audio coding technology licensed from Fraunhofer IIS and Thomson multimedia. Uses Bink Video. Copyright © 1997-2005 by RAD Game Tools, Inc. Alienware and the Alienware logo are registered trademarks and trademarks of Alienware Corporation. Windows and DirectX are either registered trademarks or trademarks of Microsoft Corporation in the U.S. and/or other countries and are used under license from Microsoft. Pentium is a registered trademark of Intel Corporation. ATI and Radeon are used under license and are registered trademarks or trademarks of ATI Technologies Inc. in the United States and other countries. GeForce is a registered trademark or trademark of NVIDIA Corporation in the United States and/or other countries. Software platform logo (tm and c) IEMA 2004. All other trademarks are property of their respective owners.

FEAR™

FIRST ENCOUNTER ASSAULT RECON

Getting Started	2
System Requirements	2
Installing and Launching the Game	3
The Menu System	4
Welcome to F.E.A.R.	5
Your Heads-Up Display (HUD)	5
Your Arsenal	8
Weapons	8
Gear	9
Hand-to-Hand Combat	11
Your Special Ability	11
Multiplayer	12
Hosting Servers	12
Game Modes	14
Default Key Configuration Chart	16
Credits	18
Monolith Productions	18
Sierra Entertainment/Vivendi Universal Games	20
GameSpy Industries, Inc.	23
Contacting Sierra	24
Customer Service/Technical Support	24
Sierra Warranty and Legal Information	25
End User License Agreement (EULA)	26

GETTING STARTED

SYSTEM REQUIREMENTS

Before installing or playing F.E.A.R., please be sure that your computer meets or exceeds the following system requirements.

MINIMUM SYSTEM REQUIRED

- o Windows® XP, x64 or 2000 with latest service pack installed
- o DirectX® 9.0c (August Edition) or higher
- o Pentium® 4 1.7 GHz or equivalent processor
- o 512 MB of RAM or more
- o 64 MB GeForce™ 4 Ti or Radeon® 9000 video card
- o Monitor that can display in 4:3 aspect ratio
- o 5.0 GB free Hard Drive Space for installation
- o Additional hard drive space for a swap file and saved game files
- o 4x CD-ROM drive (DVD-ROM drive for Director's Edition)
- o 16-bit DirectX® 9.0 compliant sound card with support for EAX™ 2.0
- o Broadband or LAN connection for multiplayer games
- o Mouse
- o Keyboard

RECOMMENDED HARDWARE

- o Pentium® 4 3.0 GHz or equivalent processor
- o 1 GB RAM
- o A 256 MB Radeon® 9800 Pro or GeForce™ 6600 or equivalent supported
- o DirectX® 9 compliant video card with hardware T&L and pixel shader 2.0 support
- o Sound Blaster® X-Fi™ series sound card

SUPPORTED CHIPSETS*

- o ATI™ Radeon® 9000 Series, Radeon® 9500 Series, Radeon® 9600 Series, Radeon® 9700 Series, Radeon® 9800 Series, Radeon® X600 Series, Radeon® X700 Series, Radeon® X800 Series, Radeon® X850 Series
- o NVIDIA® GeForce™ 4 Ti series, GeForce™ FX 5900 series, 6600 series, 6800 series, 7800 series

*Please check the readme.txt file on Disc 1 or in the main F.E.A.R. installation folder for last minute information regarding chipset compatibility.

INSTALLING AND LAUNCHING THE GAME

Director's Edition: To begin, insert the DVD into your DVD drive. Within a few seconds the setup application should start. If the setup application does not launch automatically within a reasonable amount of time, then double-click the My Computer icon on your Windows® desktop or in the Start menu, then on your DVD Drive icon, and then on the Setup.exe icon. When the first window appears, choose Next to continue, or Cancel to exit the installer. Then, follow the instructions on each page as described below to complete the installation.

Regular Edition: To begin, insert Disc 1 into your CD-ROM drive. Within a few seconds the setup application should start. If the setup application does not launch automatically within a reasonable amount of time, then double-click the My Computer icon on your Windows® desktop or in the Start menu, then on your CD-ROM drive icon, and then on the Setup.exe icon. When the first window appears, choose Next to continue, or Cancel to exit the installer. Then, follow the instructions on each page as described below to complete the installation.

License Agreement: Please read the End User License Agreement (EULA) before installation begins. To agree with the license agreement and continue installation, scroll to read the entire agreement, then select "I accept the terms of the license agreement" and click on the Next button. If you do not accept the license agreement, click Cancel to exit the installer. If you are connected to a printer, you can print out the license agreement with the Print button.

CD Key: Enter the validation code as it appears on your CD case. When done, click Next.

Choose Destination Location: At this point, you'll need to decide where setup will install the game files. For your convenience, C:\Program Files\Sierra\FEAR is selected by default. To install to a different folder, click Change, select the directory you want, and then click OK. When ready to continue, click Next.

Select Program Folder: This screen determines which start menu folder will contain shortcuts to the game and other useful items. This defaults to Sierra\FEAR. If desired, you can specify another directory by clicking on the program folder field and typing in a new name of your choice, or you can choose one of the existing folders from the list. When ready to continue, click Next.

DirectX®: You will now be prompted to install DirectX® 9.0c to your system. If you are not 100% sure that this is already installed on your system, please select Yes. The game cannot run without these files. If you select yes, then the DirectX® installer will appear after the game installer finishes copying files.

Ready to Install the Program: If you are ready for the installer to begin copying files, click Install. You may also choose to go Back to review your previous installation choices, or Cancel the installation of the game.

GameSpy Arcade: If you wish to install GameSpy Arcade, select Yes on this screen, or select No if you do not want to install it at this time. When ready to proceed, click Next. If you select yes, just follow the on-screen instructions to complete the GameSpy Arcade installation. If you change your mind at any time and wish to abort installation of GameSpy Arcade, click Cancel.

After installation, a confirmation screen will appear. Click **Finish** to exit the installer.

Once installation has completed, you can launch the game at any time through the Windows® Start menu. To do this, click on the Start button, select **All Programs**, the **Sierra** folder, and **FEAR**, and then click on the **FEAR** icon.

If you encounter any problems while installing, launching, or playing the game, please refer to the **readme.txt** file that's located on Disc 1 for troubleshooting tips and last minute information.

THE MENU SYSTEM

Each time the application launches a few splash screens and movie files will be shown. You can abort these by pressing the spacebar. At this point you will be taken to the main menu.

To see additional information for any item in the menu system, just place your mouse cursor over the item and read the help text at the bottom of your screen.

Single player: Select this to start a new single player game or load a previously saved game.

Multiplayer: Select this to host or join a multiplayer game on the Internet or your LAN.

Options: This will open the F.E.A.R. control panel and allow you to modify many aspects of the game such as key mappings, display settings, and game options.

Profile: F.E.A.R. was designed so that multiple players can maintain their own unique settings and saved games. Use these options to create, load, or edit your own personal player profile.

Quit: When you are done playing, use this to quit the game and return to Windows®.

While actually playing a game, you can bring up the system menu by pressing <Esc> at any time. This will pause the game and provide you with these options:

Load game: Opens the Load Game screen.

Save game: Opens the Save Game screen.

Options: Opens the Options screen.

Leave game: If the System screen is accessed from within a level, the player will be given the option to abort the current game.

Resume game: Closes the menu window and returns to the game.

Quit: Quits out to Windows®.

To close the system menu and resume gameplay, press <Esc>.

WELCOME TO F.E.A.R.

You must be the new guy. I hear you're one tough son of a bitch. I hope it's true, because we could really use the help. Finding the right people for this team isn't easy, especially with the kind of crap we've been running into lately.

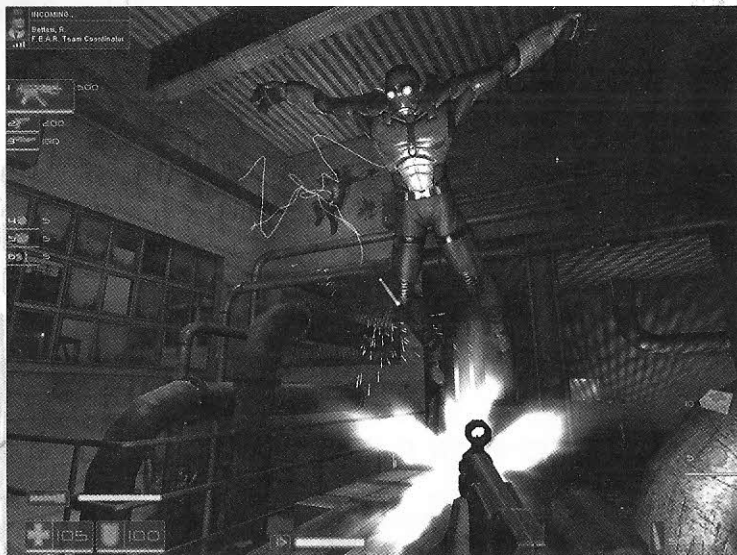
Any special ops team needs to prepare for the unexpected, but with F.E.A.R., you'd better learn to expect the unexpected, and more importantly, believe the unbelievable. You're going to come across stuff you can't explain, and you'll need to be ready to deal with whatever it throws at you. Your own life, as well as the lives of your teammates, will depend on it.

I know you're anxious to get started, but give me a few minutes to bring you up to speed on your equipment.

YOUR HEADS-UP DISPLAY (HUD)

Your HUD combines state-of-the-art communications and scanning technology with a wide variety of monitoring equipment. The information it can provide to you in the field is invaluable, so make sure that you know how to use it. Note that the items displayed on the HUD will fade out after a few seconds to save battery power and allow you to see better, but they will reappear as necessary to inform you of any changes. You can also manually instruct the HUD to refresh at any time if you need an update on your overall status."

"To refresh your HUD, press the Scores/Refresh HUD key. To make the HUD fade out more slowly, more quickly, or not at all, adjust the HUD fade speed bar in the game options menu.



Incoming Transmission Indicator (Upper Left):

Your teammate's radios are designed to broadcast an identification code at the start of each message. The Incoming Transmission Indicator will show you the name and function of the individual who sent the message.

Arsenal Display (Upper Left):

This displays your current weapons and the total amount of ammo carried for each. Blue icons indicate that the weapon is ready for use, while red indicates that the weapon cannot be used until you find more ammo for it.

Grenade Inventory (Center Left)

Shows the different types of grenades and the number of them that you have. If you have some in inventory, it will be blue. If you are out of inventory, it will be red.

SlowMo Meter (Bottom Center):

Your SlowMo ability is constantly charging whenever you aren't using it. This meter shows how much SlowMo ability you have stored up. If the meter is blue, you are free to initiate SlowMo at any time by pressing the SlowMo key. If the meter is red, you must wait until it turns blue before you can initiate SlowMo. Reflex booster powerups will increase the size of this meter.

Flashlight Meter (Bottom Left):

This meter shows the charge in your flashlight battery. The flashlight will automatically charge up when not in use. You can activate your flashlight whenever the meter is not empty. When on, your flashlight will gradually drain its battery until it's depleted.

Health Monitor (Bottom Left):

The health monitor shows the severity of your injuries based on readings of your vital signs. The lower it goes, the closer you are to death. The monitor will turn red when you have less than 50 health points, and will blink rapidly if you fall below 25 health points. If it reaches 0, you will die. Frequent use of medkits and medical stations will keep you healthy and maximize your potential for living through your assignments.

Armor Monitor (Bottom Left):

The armor provided to you includes impact sensors that can accurately determine the amount of protection that you are afforded at any given time. Once your armor is gone, you will take a lot more damage from small arms fire, so be sure to pick up any additional armor that you may find lying around.

Crosshair (Center):

At the center of your screen is the crosshair. Use this to aim your weapons at enemies. Your crosshair is electronically tuned to both you and the weapon you are currently carrying. It will automatically resize itself based on your equipped weapon, your stance, and your current movement speed. A smaller crosshair means greater precision.

Grenade Selection (Bottom Right):

While you may be carrying up to three types of grenades at once, you can only have one type ready to throw at any time. This icon will show you the grenade type that you currently have selected. The number to the left of the icon shows how many grenades of this type you have in your inventory. A red icon indicates that you don't have any grenades of the selected type.

Ammo (Bottom Right):

This display shows the amount of ammo left in the weapon you're holding, as well as the total amount of this ammo type that you have remaining. When your gun runs out of ammo, you will automatically reload more of the same ammo type. If there isn't any more ammunition of the same type available, then the next available weapon will be selected.

Medkit Inventory (Bottom Right):

This display shows you how many Medkits you have in your inventory. You can use these to restore some of your health if you get injured. The maximum number of Medkits you can carry is 10.

YOUR ARSENAL

WEAPONS

As the point man for your team, you're going to need the kind of firepower that can get the job done under a wide variety of circumstances. For this reason, we'll be outfitting you with the standard F.E.A.R. loadout for most of your missions:

Your primary weapon is the lightweight RPL Sub-Machine Gun. It's fully automatic, has a very high rate of fire, and you can carry around plenty of ammo for it. It's very handy for dealing with unarmored and fast moving targets.



All F.E.A.R. personnel are outfitted with an AT-14 Pistol. Should you come across another pistol in the field, you have been provided with training that will allow you to dual wield them for maximum efficiency.



Once thrown, your N6A3 Fragmentation grenades will explode after a specific amount of time, killing or severely injuring anyone within range. They will also explode immediately upon contact with an enemy.

You are fully authorized to swap out your weapons for others that you come across at any time and for any reason.

*Keep in mind that some of the heavier-duty weapons you may encounter will slow you down when equipped and can't hold much ammo, so be careful when discarding your original equipment.

*To swap your currently selected weapon with one on the ground, stand close to the new weapon, look at it, and press the Use key when the swap icon appears on-screen. You can only carry 3 weapons (or 2 pistols and 2 other weapons) at once, grenades excluded.

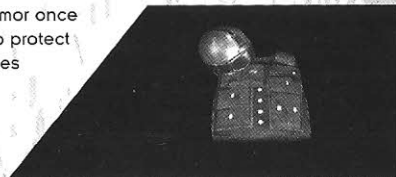
GEAR

Your monitoring equipment will let you know when you're in need of medical attention, but it's up to you to keep yourself patched up and protected.

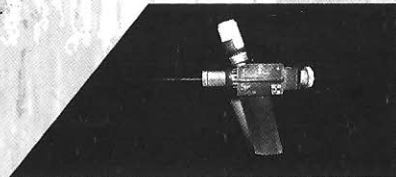
Medkits can be collected and then used when you need first aid for your wounds. Keep an eye out for these when in the field.



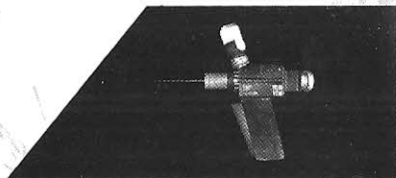
Be on the lookout for replacement Body Armor once yours becomes damaged. Armor will help to protect you against standard weapon fire, but it does not protect against explosive or environmental damage.



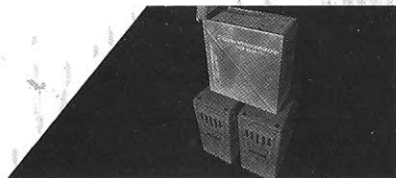
Health Boosters permanently increase your maximum health by a small amount.



Reflex Boosters permanently increase your maximum SlowMo time.



Ammo Refill Stations will slowly fill up your ammunition reserves when you stand close by. Many stations also have extra grenades. Note that these can only be found in multiplayer games.



Health Stations will slowly regenerate your health whenever you stand close by. Note that these can only be found in multiplayer games.



HAND-TO-HAND COMBAT

As you are well aware, there will always be combat scenarios where hand-to-hand combat is preferable to using weapons. We've been told that you can be a real badass, especially when you combine your moves with that incredible reaction time of yours. The brass is anxious to see you in action, and they are always watching, so don't let them down!

To perform fighting moves in the game, you must use the following combinations of the Fire, Melee, and movement keys.

Press Fire or Melee when all weapons are holstered to throw a simple punch.

Press Melee when holding any weapon to rifle-butt or bludgeon your enemy with your weapon.

To perform a roundhouse kick, press Jump + Melee.

To perform a devastating slide kick, press Forward + Crouch + Melee.

To perform a deadly forward jump kick, press Forward + Jump + Melee.

YOUR SPECIAL ABILITY

You weren't chosen for the government's most secretive special ops team for your combat skills alone, as impressive as I've heard they are. What these guys are really interested in is your Reflexes. You already know what I mean, but let me spell it out for you.

You have the reflexes of a cat on an adrenaline rush. In fact, when they analyzed recordings of some of your training ops, you were moving so fast that they had to play it in slow motion just to see what you were actually doing. My guess is that's how you see your opponents, too, right? In slow motion?

Not exactly the conversational type eh? Oh well, that's all for now. Good luck!

MULTIPLAYER

To play F.E.A.R. against other live players, you must be connected to other computers via a LAN or a broadband (DSL, Cable, T1, or T3) connection to the Internet.

If you are already connected, then select Multiplayer from the main menu to begin. This will take you to the Join server screen. From here, you can search for existing servers, join a server, or launch your own.

To see what servers are available to join, click Find servers. The game will search your LAN and the Internet for existing games and list them in the window. The window lists important information about each server, including its name, ping, game type, number of players, and game version. You can only join games that are running the same version of F.E.A.R. that you currently have installed.

When ready to join a server, just click on one in the list. If you connect successfully you'll see a loading screen appear. When the level finishes loading, you'll be asked to select a weapon to start out with. If this is a team game, you'll also be required to choose a team. Once you have completed these steps, your game will begin.

HOSTING SERVERS

To host a server or start a dedicated server, click on Host. This will bring you to a host setup screen with the following options:

Session name: Changes the name of your server. This is the name that will appear when other players search for games on your LAN or the Internet.

Game type: Toggles through the available game modes. There are 8 multiplayer modes to choose from, each with its own set of rules. See the section below regarding available game types for more information.

Game type options: These are settings that will affect gameplay on your server. The actual options that are available vary by game type.

Weapon restrictions: If the Weapon restrictions option is set to Yes in the Game type options screen, this menu allows you to determine which weapons will be restricted on your server. Restricted weapons cannot be selected from the loadout menu, and will not appear as pickup items in the levels.

Maps: Clicking on this will open a screen where you can modify the list of maps that your server will run and the order in which they'll be played. The column on the left shows a list of maps that are available for the selected game type. The column on the right shows the maps that are currently selected. Only the maps that are large enough to accommodate the maximum number of players set in the game options are selected by default.

Important Note: You may manually select maps that are designed for a smaller number of players that you are currently allowing on your server at once. However, this will cause problems in Elimination and Team Elimination games as some players will be eliminated immediately at the start of each round.

Lock server: Determines if your game will require a password or not.

Password: This item is only available when Lock Server is set to On and contains the current password that all players will be required to enter before they are permitted to join your game. The password can be any sequence of letters, numbers, and other characters, but can be no longer than 15 characters total.

Allow SCMD: Toggle this to On if you want to enable SCMD controls so that the server can be controlled by a remote client. For more information on this feature, please see the serverreadme.txt file in your main F.E.A.R. installation folder.

SCMD Password: This item is only available when Allow SCMD is set to On. This is the password that a remote client must enter in order to log into the SCMD system and gain control of the server.

Network port: Allows you to change the network port to use for your game. This is set to "27888" by default.

Dedicated Server: Set this to Yes if you want to run a dedicated server. For additional information regarding the setup of dedicated servers, please refer to the serverreadme.txt file in your main F.E.A.R. installation folder.

LAN Only: Toggle this to Yes to limit this game to players on your local network, or No to allow players from the Internet to join as well.

Bandwidth: Provides an assortment of preset bandwidth options. The actual bandwidth for each option will appear in the Bandwidth (custom) setting below. Choose the option that is the closest match to your Internet connection type or speed. Available options are DSL (Low), DSL (High), Cable, T1, and T3. Note that setting this option to incorrect values can have a serious impact on server performance. Note that this option is only available for Internet games.

Bandwidth (custom): Enter a custom bandwidth value here if none of the available options matches closely enough to your connection speed. This option is only available for Internet games.

Custom Content: Use this section to set up options for custom content download. For more information on custom content downloading, refer to the serverreadme.txt file in your main F.E.A.R. installation folder.

Load/Save Options: All changes to host options are automatically saved to the currently selected option file whenever you exit the host game menu. This section will allow you to create, load, and delete configuration files as needed.

Reset: This option will restore all host options to their default settings.

GAME MODES

Deathmatch

Your primary goal in Deathmatch is to kill other players as often as you can before the round ends. If you are killed, you can respawn and continue playing.

Team Deathmatch

In Team Deathmatch you can only score points by killing members of the opposing team. As in Deathmatch, you can respawn if you are killed.

Elimination

In this mode, survival is as important as eliminating your enemies. If you die, you are out for the remainder of the round. The round ends when only the winner is left alive or the time limit is reached.

Team Elimination

Destroy all players on the enemy team while keeping yourself and your teammates alive. The team with any players still standing at the end of the round wins.

SlowMo Deathmatch

Find the reflex booster powerup and hold it as long as you can while fighting off enemies. You will gain points for each second that you hold onto the booster. If you manage to hold onto the booster until your SlowMo meter is fully charged, you may initiate slow motion and deliver some real action-movie style damage to your opponents. While SlowMo is active, the carrier moves roughly twice as fast as everyone else. Once the carrier is killed, the booster can be picked up by another player.

Team SlowMo Deathmatch

This mode plays the same as normal SlowMo Deathmatch, except that when SlowMo is initiated, the carrier's entire team gains the benefits of slow motion. Also, points for holding the reflex booster over time are awarded to the team, not the individual who carries it.

Capture the Flag (CTF)

Two teams battle to steal each other's flag from their base and bring it back to their own flag to score points. Points are also awarded for killing enemies, defending your flag carrier against enemies, defending your base from enemies when the flag is present, and returning your flag to your base if it's dropped by an enemy.

SlowMo CTF

The rules in SlowMo CTF are the same as those for normal Capture the Flag, but a reflex booster that spawns at the very center of the map adds a new dimension to the gameplay. As in SlowMo Deathmatch, the booster will slowly charge up the SlowMo meter of the person who carries it. Once the meter is full, the player may initiate SlowMo at any time to give himself and his teammates a considerable advantage, so don't let the booster fall into enemy hands!

DEFAULT KEY CONFIGURATION CHART

Unmappable Controls

Menu	<Esc>
Quick Save	<F5>
Quick Load	<F9>

Movement Controls

Forward	W
Backward	S
Step Left	A
Step Right	D
Turn Left	Left Arrow
Turn Right	Right Arrow
Sidestep (Strafe)	Right Ctrl
Walk	<Unassigned>
Jump	Spacebar
Crouch	C
Lean Left	Q
Lean Right	E
Toggle Walk	<Unassigned>

Interaction

Fire	Mouse Button 0
Melee	Mouse Button 1
Throw Grenade	G
Use	F
Reload	R
Aim/Zoom	Shift
SlowMo	Left Ctrl
Flashlight	X

Inventory

Weapon Slot 1	1
Weapon Slot 2	2
Weapon Slot 3	3
Next Weapon	Mouse Wheel Down
Previous Weapon	Mouse Wheel Up
Last Weapon	<Unassigned>
Select Frag Grenade	4
Select Proximity Grenade	5
Select Remote Bomb	6
Next Grenade	<Unassigned>
Use Medkit	Z
Holster Weapon	H

Status

Scores/Refresh HUD	Tab
Mission Status	M
Talk	T
Team Say	Y
Team Radio	V
Look Up	Up Arrow
Look Down	Down Arrow
Center View	End

CREDITS

MONOLITH PRODUCTIONS

THE F.E.A.R. TEAM:

ART

Kevin Deadrick - Senior Artist, World
Andy Grant - Senior Artist/Animator
Andrew Griffin - Artist, World
Steve Lee - Senior Artist, World
David Longo - Art Director, 3D Coordinator
Dusty Petersen - Artist, World
Wes Saulsberry - Art Lead
Ken Taya - Artist, World
John Turner - Senior Artist, Characters/
Weapons
Patrick Watje - Artist/Animator
Simon Wong - Lead Motion Capture
Technician

AUDIO

James Ackley - Director of Audio/Sound
Designer
Nathan Grigg - Composer
Kristofor Mellroth - Sound Designer
Brian Pamintuan - Sound Designer
Kristen Quebe - Sound Designer

DESIGN

Martin Ka'ai Cluney - Level Designer
Leo De Bruyn - Level Designer
Michael Drummond - Level Designer
Jared Gerritzen - Level Designer

Craig Hubbard - Creative Director/Lead
Game Designer (and Script Writer)
John Mulkey - Lead Level Designer
Chris Voss - Level Designer

ENGINEERING

Game Engineering:
Jim Geldmacher - Software Engineer
(and Additional Level Design)
Jeff Orkin - Senior Software Engineer, AI
Russ Pecoraro - Software Engineer
Brad Pendleton - Lead Software Engineer

Tools & Technology:

Jeff Cotton - Software Engineer, Tools
Kevin Francis - Senior Software Engineer,
R&D/Support
Eric Gross - Software Engineer, Integrations
Terry Jones - Software Engineer, Audio
Doug McDiarmid - Senior Software
Engineer, Multiplayer
Piotr Mintus - Software Engineer, Tools
John O'Rourke - Senior Software Engineer,
Engine Architect
Kevin Stephens - Director of Technology

MANAGEMENT

Jon Gramlich - Associate Producer, Quality
Assurance Lead (and Additional Level
Design)
Chris Hewett - Executive Producer (and
Additional Level Design)

QUALITY ASSURANCE

Dan Bell - Quality Assurance Analyst
Aaron Giddings - Quality Assurance Analyst
Brett Blair - Quality Assurance Analyst
Seth Broman - Quality Assurance Analyst
Justin Maloney - Quality Assurance Analyst

VOICE ACTORS

Greg Baldwin (Norton Mapes, Additional
Voices)
Jock Blaney (ATC Security)
Susanna Burney (Jin Sun-Kwon, Additional
Voices)
Colby Chester (The Senator)
Grant Goodeve (Harlan Wade, Additional
Voices)
Tim Gouran (Spen Jankowski, Additional
Voices)
Todd Lincea (Aldus Bishop, Additional
Voices)
Mark Lund (Soldiers, Additional Voices)
Peter Lurie (Paxton Fettel, Additional Voices)
Melissa Roberts (Alice Wade, Additional
Voices)
Meg Savlay (Genevieve Aristide, Additional
Voices)
David Scully (Douglas Holiday, Additional
Voices)
Andre Sogliuzzo (Delta Force, Additional
Voices)
Jim Ward (Rowdy Betters, Additional
Voices)

MOTION CAPTURE ACTORS

Hans Altweis
Charity Parenzini

ADDITIONAL MONOLITH DEVELOPMENT

Scott Albaugh - Art/Animation Assistance
Mike Baldwin - Engineering Assistance
Kristine Bryan - Production Assistance
Nate Cleveland - Engineering Assistance
Curt Collins - Art Assistance
Nate Edson - Production Assistance
Michael Goncalves - Production Assistance
Bert Harvey - Production Assistance

Peter Higley - Engineering Assistance
Eric Kohler - Concept Art Assistance
Brian Legge - Engineering Assistance
Aaron Leiby - Engineering Assistance
Dave Matthews - Art Assistance
Dayne McClurg - Production Assistance
Alex Pfeiffer - Level Design Assistance
Matt Rice - Engineering Assistance
Mark Seminatore - Engineering Assistance
Jonathan Stein - Level Design Assistance
Cass Thruston - Sound Design Assistance
Matt Titelbaum - Engineering Assistance
Dan Valerius - Engineering Assistance
Joe Waters - Engineering Assistance

SPECIAL THANKS TO THE FOLLOWING MONOLITH PERSONNEL

Andrea Barringer - Human Resources
Administrator
Dan Brady - Director of Information Systems
Wayne Burns - Chief Financial Officer &
Treasurer
Carl Halverson - Desktop Support
Technician
Theresa (TJ) Jones - Executive Assistant
Patti Kail - Director of Human Resources
Josh Lebow - System Administrator
Spencer Maier - System Administrator
Samantha Ryan - CEO/President
Teresa Todd - Financial Analyst
Lowell Vaughan - Director of Market
Research
Jim Wallingford - Information Systems
Administrator
Sandra Watanabe - Finance Manager
William Westwater - Director of
Development

Additional Sound Design by Warner Bros.
Sound Department:

Ron Fish - Sound Designer

Gregory J. Hainer - Sound Designer

John Roesch - Foley Artist

Alyson Moore - Foley Artist

Mary Jo Lang - Foley Recordist

Mark Morrell - Sound Librarian

Kim Waugh - VP Post Production, Warner Bros.

Special Thanks:

Bill Bilodeau - ATI

Todd Clauson - Intel

Necia Dallas

Cindy Desmarais - Glitchpop

Keith Galocy - Nvidia

Kev Gee - Microsoft

Jason Hall - Warner Bros. Interactive Ent.

Tom Hitchcock - IGN/GameSpy

Le Khang

Gary Kussman

Jamie Lopez - The Actor's Group

Matt McClellan - Intel

Skip McIlvaine - Microsoft

Steve Mitchell - Steve Mitchell Studios

James Neil - IGN/GameSpy

Craig Peeper - Microsoft

Derek Reynolds - Intel

Guennadi Riguer - ATI

Doug Rogers - Nvidia

Kevin Schumacher - Topo Swope Talent

Rex Sikora - ATI

Rex Sikora - Nvidia

Topo Swope - Topo Swope Talent

Mark Thomas - ATI

Matthias Wloka - Nvidia

Kiyotaka Yaguchi

SIERRA ENTERTAINMENT/ VIVENDI UNIVERSAL GAMES

PRODUCTION

Executive Vice President of
Worldwide Studios -
Peter Della Penna

Vice President of Production -
Bret Berry

Executive Producer -
Chris Miller

Lead Producer -
Rob Loftus

Producer -
Ross Perez

Associate Producer -
Francis Choi

Chief Technology Officer -
Michael Heilemann

Technical Manager -
Rob Kohout

Production Art -
Kevin Hill
John Tripplet

Special Thanks -
Mike Jacob, Kelly Zmak,
Kenneth S. Rosman,
Joe Selinske, Paul Pawlicki,
Adam Kahn, Brian Leake,
Geoff Bent, Tim Tran, and
Patrick Dillon

MARKETING

Executive Vice President & Chief Strategy
& Marketing Officer -
Cindy Cook

Senior Vice President Global Marketing -
Ed Zobrist

Vice President of Marketing -
Koren Buckner

Director of Marketing -
Lori Inman

Brand Manager -
Ben Kusin

Marketing Coordinator -
Kevin Vlaming

AP BD Content Manager -
Chloe Rothwell

Brand Manager Asia/Pacific -
Karen Teo

Marketing Director Europe -
Estelle Dubernard

Product Manager Europe -
Antoine Molant

PUBLIC RELATIONS

Senior Public Relations Manager -
Marcus Beer

Senior Public Relations Manager -
Sarita Churchill

CREATIVE SERVICES

Michael Bannon
Bill Watt
Raul Ramirez
Zack Hubert
Michelle Garnier Winkler
Mary Moffitt

LEGAL

Pam Teller
Kevin Crook

WEB

Amy Chen
Hal Paris
Greg Agius

PROMOTIONS

Julie Thomas
Colette Fowler
Matthew Allen

TRADE MARKETING

Linda Ethridge
Chris Wincek

VIDEO SERVICES

Jim Carey
Michael Herring
Tonya Stumphauzer

CONSUMER RESEARCH

Miriam Bishay
Eric Culqui

VIVENDI QA DEPARTMENT

Vice President of Studio Operations -
Rich Robinson

Quality Assurance Director -
James Galloway

Quality Assurance Manager -
Michael Caradonna

Quality Assurance Project Lead -
William Guerrero

Quality Assurance Floor Lead -
Robert Scott

Quality Assurance Testers -

Minh Do
Channa De Silva
Julio Ferrer
Joseph Ha
Jesse Madrid
Jeff Monray
Christopher Placer
Jason Ramirez
Stephen Reed
Miguel Rodriguez
David Schaffer
David Scharf
Zachary Shaffer
John St. John
Laszlo Szoke
Karl Tars
Earon Guerrero
Jason Colombetti
Matt Hoffman
Duncan Field
Jennifer Losi
Crystin Kuhnke
Matt Stokes
Andrew Dorsett
Chris Redinger
Matthew Mizutani

Quality Assurance Network Engineer -
Eric Hoffmaster

Quality Assurance Technicians -
Terrance Stephenson

Quality Assurance Resources Manager -
Michael Gonzales

Quality Assurance Supervisors -
Christopher Richardson
James Pasque

Configuration Lab Manager -
Jaime Rios

Configuration Technicians Level 2 -
Afolabi Akibola
Jason Perry

Configuration Technicians Level 1 -
Edward Campos
Chang Koo
Chris Miller
Ken Sato

COMPATIBILITY REQUIREMENTS GROUP & PRODUCT CERTIFICATION

TRG & VUPC Senior Manager -
Christopher Wilson

CRG Supervisor -
Joaquin Meza

CRG Testers -
Robert Fleischacker
Matt Jensen
Earl DeVera

VUPC Team -
Brandon Valdez
Cyra Talton
Fausto Lorenzano
Richard Benavides

GAMESPY INDUSTRIES, INC.

Project Management & Multiplayer Design -
Tom Hitchcock

Middleware Support Engineer -
Saad Nader

Middleware SDK Engineer -
Bill Dewey

Developer Support Manager -
Joost Schuur

Sales Operations Manager -
Leif Klokkevold

Quality Assurance -
Philip Wilson
Ryan Sharpe

CONTACTING SIERRA

CUSTOMER SERVICE, SUPPORT AND SALES

United States Sales

Phone: (800) 757-7707

Hours: Monday-Friday 6 AM to 6 PM, Eastern Time

International Sales

Phone: (800) 757-7707

Hours: Monday-Friday 6 AM to 6 PM, Eastern Time

<http://www.sierra.com>

On-Line Sales

Internet USA: <http://www.sierra.com>

TECHNICAL SUPPORT

North America

Sierra Entertainment offers a 24-hour automated technical support line with recorded answers to the most frequently asked technical questions. To access this service, call (800) 630-0811, and follow the recorded instructions to find your specific topic and resolve the issue. If this fails to solve your problem, you may still write or fax us with your questions, or contact us via our Web site:

<http://support.vugames.com>

Sierra Entertainment

Technical Support

4247 South Minnewawa Avenue

Fresno, CA 93725

Main: (800) 630-0811

Monday-Friday, 6 AM to 6 PM, Eastern Time

<http://support.vugames.com>

Disk and/or Manual Replacement:

Product Returns:

Vivendi Universal Games, Inc.

Warranty Returns

4247 South Minnewawa Avenue

Fresno, CA 93725

* Returns to this address valid in North America only.

SIERRA WARRANTY AND LEGAL INFORMATION

Sierra's end user license agreement, limited warranty and return policy is set forth in the EULA found at the end of this manual and is also available during the install of the product.

LICENSE AGREEMENT

YOU SHOULD CAREFULLY READ THE FOLLOWING END USER LICENSE AGREEMENT BEFORE INSTALLING THIS SOFTWARE PROGRAM. BY INSTALLING, COPYING, OR OTHERWISE USING THE SOFTWARE PROGRAM, YOU AGREE TO BE BOUND BY THE TERMS OF THIS AGREEMENT. IF YOU DO NOT AGREE TO THE TERMS OF THIS AGREEMENT, PROMPTLY RETURN THE UNUSED SOFTWARE PROGRAM TO THE PLACE OF PURCHASE OR CONTACT SIERRA ENTERTAINMENT CUSTOMER SERVICE AT (800) 757-7707 FOR A FULL REFUND OF THE PURCHASE PRICE WITHIN 30 DAYS OF THE ORIGINAL PURCHASE.

This software program and any files that are provided by Sierra Entertainment, Inc., to you by on-line transmission or otherwise to "patch," "update," or modify the software program, as well as any printed materials, on-line or electronic documentation, and any and all copies and derivative works of such software program and materials are the copyrighted work of Sierra Entertainment, Inc. and/or its wholly owned subsidiaries, or its licensors or suppliers ("Sierra"). All use of the software program ("Program") is governed by the terms of the End User License Agreement which is provided below ("License Agreement"). The Program is solely for use by end users according to the terms of the License Agreement. Any use, reproduction or redistribution of the Program not in accordance with the terms of the License Agreement is expressly prohibited.

END USER LICENSE AGREEMENT

- 1. Limited Use License.** Sierra hereby grants, and by installing the Program you thereby accept, a limited, non-exclusive license and right to install and use one (1) copy of the Program for your use on either a home or portable computer. The Program may also contain a "Campaign Editor" (the "Editor") that allows you to create custom levels or other materials for your personal use in connection with the Program ("New Materials"). All use of the Editor or any New Materials is subject to this License Agreement. In addition, the Program has a multi-player capability that allows users to utilize the Program over the Internet via GameSpy.com or another gaming network designated by Sierra (an "On-line Provider"). Use of the Program over GameSpy.com or other On-line Provider is subject to your acceptance of GameSpy.com's or such other On-line Provider's Terms of Use Agreement as may be updated or modified at any time. The Program is licensed, not sold. Your license confers no title or ownership in the Program.
- 2. Ownership.** All title, ownership rights and intellectual property rights in and to the Program and any and all copies thereof (including but not limited to any titles, computer code, themes, objects, characters, character names, stories, dialog, catch phrases, locations, concepts, artwork, animations, sounds, musical compositions, audio-visual effects, methods of operation, moral rights, any related documentation, and "applets" incorporated into the Program) are owned by Sierra or its licensors. The Program is protected by the copyright laws of the United States, international copyright treaties and conventions, and other laws. All rights are reserved. The Program contains certain licensed materials, and Sierra's licensors may protect their rights in the event of any violation of this Agreement. The Program may access websites owned, controlled by, or operated by licensed affiliates of Sierra, and receive patches and/or updates to the Program from these websites. All patches, updates or other downloadable material used by, or incorporated into, the Program are the copyrighted property of Sierra, who reserves all rights therein, and shall be governed by the terms and conditions of this Agreement.

3. Responsibilities of End User.

- A.** Subject to the Grant of License hereinabove, you may not, in whole or in part, copy, photocopy, reproduce, translate, reverse engineer, derive source code from, modify, disassemble, decompile, create a source code equivalent of, create derivative works based on, or remove any proprietary notices or labels from the Program without the prior consent, in writing, of Sierra.
 - B.** The Program is licensed to you as a single product. Its component parts may not be separated for use on more than one computer.
 - C.** You are entitled to use the Program for your own use, but you are not entitled to:
 - (i)** sell, grant a security interest in or transfer reproductions of the Program to other parties in any way, nor to rent, lease or license the Program to others without the prior written consent of Sierra;
 - (ii)** exploit the Program or any of its parts for any commercial purpose, including, but not limited to, use at a cyber café, computer gaming center or any other location-based site (Sierra may offer a separate Site License Agreement to permit you to make the Program available for commercial use; contact Sierra for details);
 - (iii)** use or allow third parties to use the Editor and the New Materials created thereby for commercial purposes, including, but not limited to, distribution of New Materials on a stand-alone basis or packaged with other software or hardware through any and all distribution channels, including, but not limited to, retail sales and on-line electronic distribution, without the express written consent of Sierra;
 - (iv)** host or provide matchmaking services for the Program or emulate or redirect the communication protocols used by Sierra in the network feature of the Program, through protocol emulation, tunneling, modifying or adding components to the Program, use of a utility program or any other techniques now known or hereafter developed, for any purpose, including, but not limited to, network play over the Internet, network play utilizing commercial or non-commercial gaming networks, or as part of content aggregation networks, without the prior written consent of Sierra; and
 - (v)** create or maintain, under any circumstance, more than one simultaneous connection to any hosting service utilized for on-line play. All such connections, whether created by the Program or by other tools and utilities, may only be made through methods and means expressly approved by Sierra. Under no circumstances may you connect, or create tools that allow you to connect to the hosting service's private binary interface or interfaces other than those explicitly provided by Sierra for public use.
- 4. Program Transfer.** You may permanently transfer all of your rights under this License Agreement, provided the recipient agrees to the terms of this License Agreement and you agree to remove the Program and any New Materials from your home or portable computer.
 - 5. Termination.** This License Agreement is effective until terminated. You may terminate the License Agreement at any time by destroying the Program and any New Materials. Sierra may, at its discretion, terminate this License Agreement in the event that you fail to comply with the terms and conditions contained herein. In such event, you must immediately destroy the Program and any New Materials.
 - 6. Export Controls.** The Program may not be re-exported, downloaded or otherwise exported into (or to a national or resident of) any country to which the U.S. has embargoed goods, or to anyone on the U.S. Treasury Department's list of Specially Designated Nationals or the U.S. Commerce Department's Table of Denial Orders. By installing the Program, you are agreeing to the foregoing and you are representing and warranting that you are not located in, under the control of, or a national or resident of any such country or on any such list.

7. **Customer Service/Technical Support.** "Customer Service" as used herein may be provided to you by Sierra representatives by telephone and/or by electronic message (e-mail). "Technical Support" may be provided to you by Sierra by telephone, by electronic message (e-mail), or by posting of information related to known technical support issues on a website. Unless otherwise stated in the Program's packaging or in the Program's user manual, nothing herein shall be construed so as to place a duty upon Sierra to provide Customer Service or Technical Support via a toll-free telephone number for an unlimited period of time.
8. **Duration of the "On-Line" Component of the Program.** This Program contains an "on-line" component that allows you to utilize the Product over the Internet utilizing servers and software maintained by Sierra and/or its affiliates. Sierra may, in its sole discretion, provide the servers and software technology necessary to utilize the "on-line" component of the Program, or Sierra may license to third parties the right to provide the servers and software technology necessary to utilize the "on-line" component of the Program. However, nothing contained herein shall be construed so as to place an obligation upon Sierra to provide the servers and software technology necessary to utilize the "on-line" component beyond the time that the Program is Out of Publication. The term "Out of Publication" as used herein shall mean that the Program is no longer being manufactured by Sierra.
9. **Limited Warranty.** Sierra expressly disclaims any warranty for the Program, Editor and Manual(s). The Program, Editor and Manual(s) are provided "as is" without warranty of any kind, either express or implied, including, without limitation, the implied warranties of merchantability, fitness for a particular purpose, or noninfringement. The entire risk arising out of use or performance of the Program and Manual(s) remains with the User; however, Sierra warrants up to and including 90 days from the date of your purchase of the Program that the media containing the Program shall be free from defects in material and workmanship. In the event that the media prove to be defective during that time period, and upon presentation to Sierra of proof of purchase of the defective Program, Sierra will at its option 1) correct any defect, 2) provide you with a product of equal or lesser value, or 3) refund your money. Some states do not allow the exclusion or limitation of implied warranties or liability for incidental damages, so the above limitations may not apply to you.
10. **Limitation of Liability.** NEITHER SIERRA ENTERTAINMENT, INC., THE ON-LINE PROVIDER, NOR EACH OF THEIR RESPECTIVE PARENTS, SUBSIDIARIES OR AFFILIATES SHALL BE LIABLE IN ANY WAY FOR LOSS OR DAMAGE OF ANY KIND RESULTING FROM THE USE OF THE PROGRAM, THE EDITOR OR AN AUTHORIZED ON-LINE GAME NETWORK, INCLUDING, BUT NOT LIMITED TO, LOSS OF GOODWILL, WORK STOPPAGE, COMPUTER FAILURE OR MALFUNCTION, OR ANY AND ALL OTHER COMMERCIAL DAMAGES OR LOSSES. ANY WARRANTY AGAINST INFRINGEMENT THAT MAY BE PROVIDED IN SECTION 2-312(3) OF THE UNIFORM COMMERCIAL CODE AND/OR IN ANY OTHER COMPARABLE STATE STATUTE IS EXPRESSLY DISCLAIMED. FURTHER, EACH OF SIERRA ENTERTAINMENT, ITS PARENT AND THE ON-LINE PROVIDER SHALL NOT BE LIABLE IN ANY WAY FOR THE LOSS OR DAMAGE TO PLAYER CHARACTERS, ACCOUNTS, STATISTICS OR USER PROFILE INFORMATION STORED ON AN AUTHORIZED ON-LINE GAME NETWORK, INCLUDING GAMESPY.COM. EACH OF SIERRA ENTERTAINMENT, ITS PARENT, AND THE ON-LINE PROVIDER SHALL NOT BE RESPONSIBLE FOR ANY INTERRUPTIONS OF SERVICE ON GAMESPY.COM OR OTHER AUTHORIZED ON-LINE GAME NETWORK, INCLUDING, BUT NOT LIMITED TO, ISP DISRUPTIONS, SOFTWARE OR HARDWARE FAILURES, OR ANY OTHER EVENT WHICH MAY RESULT IN A LOSS OF DATA OR DISRUPTION OF SERVICE. Some states do not allow the exclusion or limitation of incidental or consequential damages, or allow limitations on how long an implied warranty lasts, so the above limitations may not apply.