

THE BEST OF THE WORLD'S #1-SELLING SCREEN SAVER

After Dark[®] *Classic*



WINDOWS 95 & MAC CD



Call 1-800-757-7707 or visit your local retailer today. See our web site at www.sierra.com
©1998 Sierra On-Line Inc. ® and ™ designate trademarks of, or licensed to Sierra On-Line, Inc., Bellevue, WA 98007. All rights reserved.
©1996-1998 Berkeley Systems, Inc. All Rights reserved.



57057515

Table of Contents

Table of Contents	1
WINDOWS	
Installation.....	2
Using After Dark.....	3
After Dark SetUp.....	4-5
Password.....	6
Advanced Options.....	7
Ecologic.....	8
Randomizer.....	9
Troubleshooting.....	10-11
Technical Support.....	12
Legal.....	13
MACINTOSH	
Installation.....	14
Using After Dark.....	15
After Dark SetUp.....	16-17
Password.....	18
Wallzapper.....	19
Ecologic.....	20
Randomizer.....	21
Troubleshooting.....	22
Technical Support.....	23-24
Legal.....	24



WINDOWS EASY INSTALLATION:

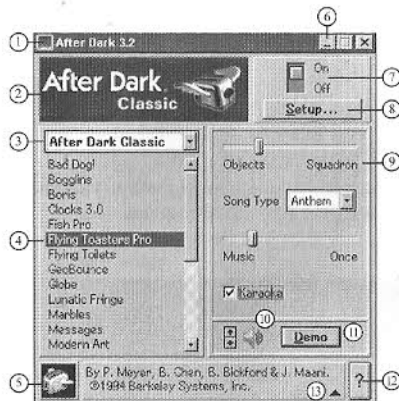
Full Install puts all of your screen saver's necessary files in their proper locations and updates any other Berkeley Systems screen savers you own. Remember to turn off any other screen savers and all anti-virus programs before you install. To install your screen saver, follow these step-by-step instructions:

1. Start up Windows.
2. Insert CD-ROM into the appropriate drive. In the Windows 3.1 Program Manager, select Run from the File menu. In Windows 95, click Start Button in the Taskbar and select Run.
3. In the Run dialog box, type "d:\setup". Select OK.
4. When the Select Directory dialog box appears, select OK to install to the C:\AFTERDRK directory.
5. When the system file dialog appears asking permission to update your system files, select YES. The installer will make backup copies of your system files and update the originals so that your screen saver will start correctly in Windows.
6. Select YES to restart Windows.

NOTE: Your screen saver replaces older versions of the After Dark control panel that you have installed on your computer. If you own other Berkeley Systems screen saver packages displays from those packages are put in individual sub-directories inside the C:\AFTERDRK directory.



USING AFTER DARK



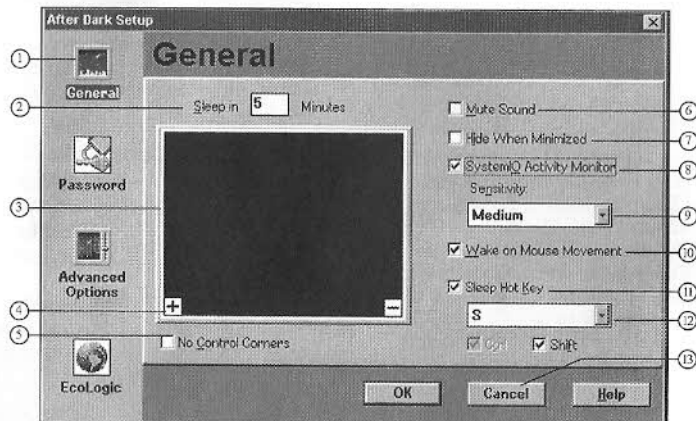
1. Double-click on the Control Menu Box to close After Dark and remove it from memory. If you close After Dark, the After Dark icon will disappear and After Dark will NOT activate.
2. To see credits, click on the logo faceplate.
3. If you have other Berkeley Systems screen savers, you will find them in this pull-down menu, just click the down arrow to select another screen saver.
4. Click a display's name from this list to select it. The currently selected display's name is highlighted.
5. This graphic is a thumbnail of the selected display. If no thumbnail is available, you'll see a generic After Dark icon.
6. Click on the Minimize Button in the upper right corner to minimize the Control Panel.
7. This switch turns After Dark on or off. If After Dark is turned off, screen saving will not occur.
8. To customize After Dark features such as Password and EcoLogic™, click on Setup...
9. Change display settings in the control panel.
10. Click the arrows of the speaker icon to control the volume for the selected display.
11. Press Demo to preview the currently selected display.
12. To access help, click the question mark.
13. To see more information on a display's controls, click the up-triangle.

NOTE: Your After Dark control panel will only display the screen saver package(s) you have installed on your computer. This screen shot features the After Dark 3.0 screen saver running under Windows 3.1.



AFTER DARK SETUP

The General Setup panel controls your screen saver's sleep time, Hot Key, Sleep Corners, SystemIQ™ and several other features. Sleep time is the amount of ideal time your screen saver waits before putting your screen to sleep. You can also put your screen saver to sleep instantly using the Sleep Corner feature or with the Sleep Hot Key combination.



GENERAL

1. Click the General icon to access After Dark features such as Sleep time and SystemIQ.
2. After Dark puts your screen to sleep after your computer has been idle for this many minutes. Change the time by typing in a new number in this text entry box.
3. This rectangle is a representation of your actual screen. The + symbol represents the Sleep Now corner. You can put the screen to sleep instantly by moving the mouse into this corner on your actual screen. The - symbol represents the Never Sleep corner. You can prevent After Dark from sleeping by leaving your cursor in the Never Sleep corner of your actual monitor screen.
4. Change the positions of the Sleep Now + and Never Sleep - corners by moving these symbols to different corners on the representative screen.
5. Check the No Control Corners box to disable the sleep corners feature.
6. Check the Mute Sound box to prevent After Dark from playing any music or sound.
7. Check the Hide When Minimized box to prevent the After Dark icon from appearing on your desktop, even when After Dark is active.
8. Check the SystemIQ Activity Monitor box to turn on SystemIQ, which makes After Dark more sensitive to your system's workload, including monitoring com port activity and CPU load.
9. The Sensitivity menu determines how sensitive SystemIQ is. A low setting means After Dark will activate even if there's a fairly large amount of system activity. A High setting will prevent After Dark from activating if there's a small amount of system activity. A Medium setting is somewhere in between. Experiment to find out which setting is best for you.
10. With the Wake on Mouse Movement checkbox selected, moving the mouse will wake up After Dark.
11. Click the Sleep Hot Key by selecting one from the menu. Unclick the Shift box if you just want a Ctrl combination. The default Hot Key is Ctrl+Shift+S.
12. Change the Sleep Hot Key by selecting one from the menu. Unclick the Shift box if you just want a Ctrl combination. The default Hot Key is Ctrl+Shift+S.
13. Click OK to save your changes. Click Cancel to close Setups without saving any changes. Click Help to get online help.



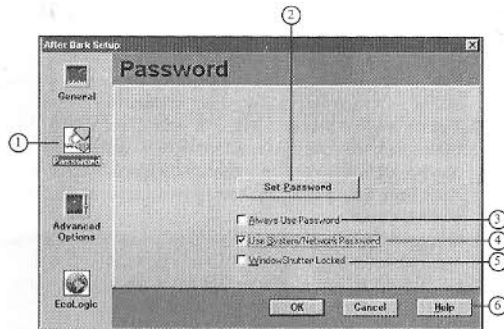


PASSWORD

The Password setup panel controls After Dark's security features. After Dark can protect your system with a password you choose.

When After Dark sleeps with password protection on, you can access your system only if you type in the correct password.

If you forget your password, relax, then check the Troubleshooting section for instructions.

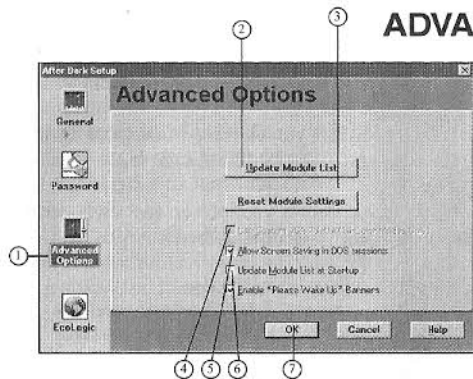


1. Click the Password icon to configure After Dark's security features.
2. Click Set Password to create a new password or change your old one.
3. Check the Always Use Password box to make After Dark always require a password before it wakes up.
4. Check the Use System/Network Password box to make After Dark use your Novell NetWare, or Windows 95 system password.
5. Check the Window Shutter Locked box to password protect entry to Windows. You will be prompted to enter your password every time you start up Windows.
6. Click OK to save your changes or click Cancel to exit without saving. Click Help to access the online help.



ADVANCED OPTIONS

Advanced Options allow you to quickly and easily update your collection of After Dark displays; it also lets you control how After Dark interacts with your system.



1. Click the Advanced Options icon to access this part of After Dark.
2. If you've added new displays or created a new display folder, click Update Module List to update After Dark immediately.
3. Click Reset Module Settings to reset all displays to their default settings.
4. If you have 16-color display, some displays may have strange colors. Uncheck the Custom VGA Palette box to force After Dark to use the standard VGA palette.
5. Click the Allow Screen Saving in DOS sessions box to run the screen saver if you are idle in full-screen DOS sessions under Windows.
6. Click this box to update the After Dark Display List every time After Dark is started.
7. Click OK to save your changes or Cancel to exit without saving. Click Help to access online help.



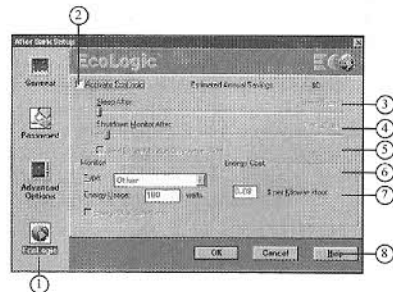
ECOLOGIC

EcoLogic™ is After Dark's power manager. EcoLogic reduces your computer's power consumption by powering off your monitor.

After a display runs for the time period that you choose, your screen saver displays a countdown animations to let you know that EcoLogic is about to turn off your Energy Star™ monitor.

At the end of the countdown, EcoLogic blanks your screen and shuts down your Energy Star monitor. Non-Energy Star™ monitors go black.

1. Click the EcoLogic icon to access After Dark's energy saving features.
2. Click the Activate EcoLogic button to turn on energy saving. With EcoLogic turned off, the screen saver will run normally and your monitor will not power off. Your Estimated Annual Savings are based on EcoLogic's current settings.
3. The Sleep After slider determines when After Dark will go to sleep (this will simultaneously change the Sleep Time in General setup).
4. The Shutdown Monitor After slide determines the amount of idle time After Dark waits before shutting down your monitor. During this time, screen saver will run.



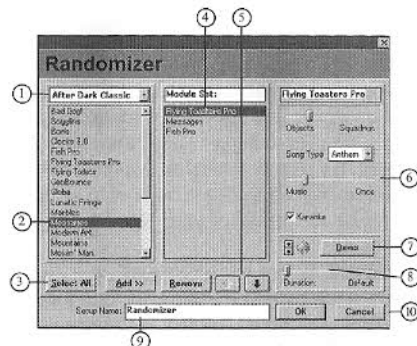
5. Check this box to shut down your monitor only after 5:00 p.m.
6. Select your monitor type from the Type pull-down menu. The energy usage of your monitor will be reflected in the box below. Check the Energy Star Compliant box if your monitor is Energy Star compliant.
7. Type in your area's electricity costs in the \$ per Kilowatt Hour text entry box.
8. Click OK to save your changes or click Cancel to exit without saving. Click Help to access online help.



RANDOMIZER

Can't decide which display to use? With Randomizer you can use all your favorite displays. Just select your favorites and Randomizer will display them in order or randomly. You can also decide how long each display runs.

To create your first Randomizer, select Randomizer from the screen saver pull-down menu, and click the New button.



1. Select your screen saver from this screen saver pull-down menu. Use this menu to select displays from other screen savers.
2. Double-click the displays you want in your Randomizer. You can select the same display more than once to make it appear more frequently than others.
3. You can click the Select All button to select all the displays in a screen saver. Click the Add button to add them.
4. The display list in the center shows the order in which the displays will run if you choose In Order from the main Randomizer menu.
5. Select a display and click Remove to remove it from the list. The Up and Down buttons will move a display up or down the list. Use them to order the displays however you wish.
6. You can adjust the controls for the currently selected display from the control panel on the right. This does not affect the display's settings outside of this Randomizer.
7. Click Demo to preview the currently selected display. The speaker controls sound for the currently selected display. However, the speaker icon on the main Randomizer menu determines the maximum volume for all displays in Randomizer.
8. The Duration Slider controls the amount of time each display runs. If Default is selected, the display will run for the default duration chosen in the main Randomizer menu.
9. Type in a unique name for your Randomizer creation in the Setup Name text entry box. It will appear in the display list whenever you select Randomizer from the screen saver pop-up menu.
10. Click OK to save your changes or click Cancel to exit without saving.



TROUBLESHOOTING

Here are the answers to a few common problems. More issues are covered in the Troubleshooting Help file. If you still have problems, see the next section about contacting our technical support department. Some displays only run properly in 256 color video mode. Change the number of colors your video displays according to your video card manufacturer's instructions. To run these displays, you will need to switch to a video driver that displays 256 colors. For instructions on how to switch your video driver, consult your Windows manual or your video card manufacturer's instructions.

Help! I forgot my password!

If your screen saver asks you for a password you don't know, don't panic. Delete the file ADWRAP.SFG from your screen saver directory (usually C:\AFTERDRK) and restart your PC. If the password is preventing you from accessing your PC, it can be bypassed by rebooting using a bootable floppy disk, the F5 key (DOS 6) or Safe Mode (Win 95). See your DOS or Windows manual for information on these features.

The Screen will not sleep:

Your screen saver may not animate if a com port is left open. If this occurs, go to the Setup panel and set the SystemIQ™ sensitivity to Low. You may also disable SystemIQ.

The installer tells me I can't install from a network drive. Why? The license agreement allows you to install your screen saver on one computer. For site licenses or volume purchases, call the Site License department at (425) 463-4400.



I want to uninstall my screen saver. How do I do it?

The After Dark installer includes an Uninstall option that completely removes your screen saver from your system. Run the Setup program as if you were going to install your screen saver. Click OK when it asks if you want to update After Dark, then choose Uninstall from the Install Options menu.

WARNING:

Uninstall removes ALL the files in your current After Dark directory.

Application Errors and General Protection Faults.

In Windows 3.1/3.11, if an Application Error occurs, choose "Close." In Windows 95, if you get an illegal Operation or illegal Instruction message, choose "Details". If you then get a General Protection fault Message, write down the exact text of the message. Exit and restart Windows to stabilize your PC. If the error referred to ADW30.EXE or other After Dark files, turn off your screen saver from the After Dark control panel, and contact our Technical Support department.

I can't get into Windows since I installed my screen saver!

On very rare occasions your screen saver may conflict with another program and cause your PC to lock up when Windows loads. If you speak with a technician from another company, inform him/her that After Dark made backup system files in the Windows directory (SYSTEM.AD3 and WIN.AD3). These files can be used to restore your system to its original state.



TECHNICAL SUPPORT

For further information, please read the Online Help file. To help us help you, please read these suggestions before you call us.

WHAT'S THE NATURE OF YOUR PROBLEM?

Customer Service: For upgrades, replacement disks, or other non-technical problems, call (425) 644-4343 and ask for Customer Service. Our e-mail address is support@sierra.com.

Technical Support: *If you're having technical problems with the software, please be in front of your computer when you call, and try to have as much of the following information as possible about:*

The problem - the nature of the problem and what led to it; if you're able to reproduce it; if any other programs are involved; if reinstalling After Dark did not solve the problem; and if any error messages appeared.

Your setup - your versions of After Dark & the system software; your Macintosh model and how much memory (RAM) it has; other Extensions/INITs and Control Panels in your System Folder.

When you call, please ask for PC Tech Support

U.S. Technical Support
Sierra On-Line Technical Support
Main: (425) 644-4343 • Fax: (415) 644-7697
P.O. Box 85006, Bellevue, WA 98015-8506
Monday - Friday 8:15 a.m. - 4:45 p.m. PST

U.K. Technical Support
Sierra On-Line Limited
Main: (44) 1-734-303-171 • Fax: (44) 1-734-303-362
4 Brewery Court
The Old Brewery
Theale, Reading, Berkshire
RG7 5AJ United Kingdom
Monday - Friday 9:00 a.m. - 5:00 p.m.

ON-LINE SUPPORT

CompuServe: GO SIERRA
America Online: Keyword "Sierra"
Internet USA: <http://www.sierra.com>
Internet United Kingdom: <http://www.sierra-online.co.uk>
Berkeley Systems Support page: <http://www.berksys.com/lite/support/index.html>



COPYRIGHTS & CREDITS

After Dark® Screen Saver Software® 1990-95 Berkeley Systems, Inc. All Rights Reserved. Screen Saver Documentation® 1995 Berkeley Systems, Inc. All Rights Reserved. After Dark, the Flying Toaster logo and the Berkeley Systems logo are trademarks of Berkeley Systems, Flying Toaster, Bad Dog, MultiModule, EcoLogic, SystemIQ, and WallZapper are trademarks of Berkeley Systems. Macintosh is a registered trademark of Apple Computer, Inc. registered in the U.S. and other countries.

LICENSE AGREEMENT

Berkeley Systems, Inc. grants you a nonexclusive, nontransferable license to use the screen saver (the Program) on one computer. You may install one copy of the Program onto the Hard Disk of one computer, and you may make one copy of the Program disk for backup purposes. These copies must include the After Dark copyright notice.

This Program, including its graphics displays and its related documentation, are copyrighted. You may not rent, distributed or transfer copies of the Program or documentation to others; modify, reverse engineer, disassemble, decompile, or translate the Program or documentation; make any copies of the individual module(s) for use with programs; or use the Program on more than one terminal of a network, on a multi-user computer, on a time-sharing system, on a service bureau, or on any other system on which the Program could be used by more than one person at a time.

WARRANTY

This license is effective until terminated. You may terminate it at any time by destroying all copies of the Program. It will also terminate automatically if you fail to comply with any of the terms and conditions of this Agreement.

This Agreement constitutes the entire agreement and understanding between the parties and supersedes any prior agreements, representations, or understandings, whether oral or written, relating to the Program.

This Agreement shall be governed by the laws of the State of California.

Berkeley Systems, Inc. warrants that the documentation and the original Program disks are free from physical defects in material and workmanship under normal use for a period of sixty days from the date of purchase. If during this warranty period you discover that either the documentation or the program disks contain a physical defect, return the defective item along with proof of purchase to your retailer and you will receive a replacement at no charge. This is your sole and exclusive remedy for breach.

THE WARRANTY SET FORTH ABOVE IS EXCLUSIVE AND IN LIEU OF ALL OTHERS, ORAL OR WRITTEN, EXPRESS OR IMPLIED, BERKELEY SYSTEMS MAKES NO WARRANTY OR REPRESENTATION, EXPRESS, IMPLIED, OR STATUTORY, WITH RESPECT TO THIS PROGRAM, ITS QUALITY, PERFORMANCE, MERCHANTABILITY, OR FITNESS FOR A PARTICULAR PURPOSE. THIS PROGRAM IS SOLD "AS IS," AND YOU, THE LICENSEE, ARE ASSUMING THE ENTIRE RISK AS TO ITS QUALITY AND PERFORMANCE.

IN NO EVENT SHALL BERKELEY SYSTEMS BE LIABLE FOR DIRECT OR INDIRECT, SPECIAL INCIDENTAL, OR CONSEQUENTIAL DAMAGES RESULTING FROM THE USE OF THE PROGRAM OR FROM ANY ERROR OR DEFECT IN THE PROGRAM OR ITS DOCUMENTATION, SUCH DAMAGES INCLUDE, BUT ARE NOT LIMITED TO, LOSS OF PROFIT, LOSS OF PROGRAMS OR DATA, AND DAMAGE TO YOUR MONITOR. IN NO EVENT SHALL LIABILITY EXCEED THE PRICE OF THE PROGRAM.

The above exclusions may not apply to you. This warranty provides you with specific legal rights. There may be other rights that you may have which vary from state to state.



MACINTOSH EASY INSTALLATION:

Easy install puts all of your screen saver's required files in their proper locations and updates any other Berkeley Systems screen savers you own. To install your screen saver, follow these step-by-step instructions.

(Before installing, turn off any virus protection software. If you are installing from a CD-ROM, turn off any virus protection software, but do not hold down the Shift key at start up.)

1. For CD-ROM Install: Place CD in CD-ROM drive.
2. Double-click on the Double-Click Me to Install icon. A screen appears with information about After Dark.
3. Select Continue. The install screen appears.
4. Select Install.
5. Select OK.
6. When installation is complete, the installer prompts you to restart your system. Don't forget to fill out your registration card and send it in.

NOTE: Installing your screen saver automatically replaces older versions of the After Dark control panel. If you own other Berkeley Systems screen saver packages, including After Dark 2.0 displays from those packages are put inside individual folders within the After Dark Files folder. Those folders appear as options in the After Dark control panel.



USING AFTER DARK

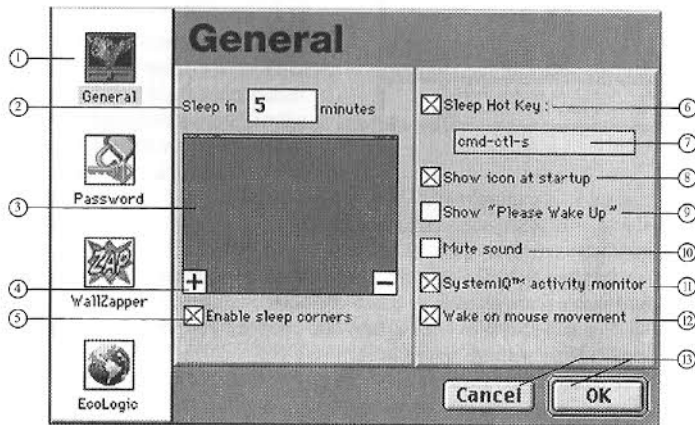


1. To see credits and version information, click on the logo faceplate.
2. This is the screen saver pop-up menu. If you have another screen saver from Berkeley Systems, click here to select it. You can also press Command-Up Arrow or Command-Down Arrow to select screen saver folders.
3. Click on a display name from this list to select it. The currently selected display is highlighted. You can also type the first few letters of the display name to select it.
4. This graphic is a thumbnail of the selected display. If a thumbnail is not available, you'll see a generic After Dark Icon.
5. This switch turns your screen saver on or off. If your screen saver is turned off, screen saving will not occur until your screen saver is turned on again.
6. To customize features such as password protection and Ecologic, click Setup. You can also select Setup from the File menu or press Command-5.
7. Change display settings in this area.
8. Click the arrows of the speaker icon to change the volume of the selected display.
9. The Demo button lets you preview the currently selected display and change its settings. You can also select Demo from the file menu or press Command-D.
10. To see more information about a display and its controls, click on the text at the bottom of the control panel.



AFTER DARK SETUP

The General Setup panel controls your screen saver's sleep time, Hot Key, Sleep Corners, SystemIQ™ and several other features. Sleep time is the amount of ideal time your screen saver waits before putting your screen to sleep. You can also put your screen saver to sleep instantly using the Sleep Corner feature or with the Sleep Hot Key combination.



GENERAL



1. Click the General icon to access features such as Sleep time and SystemIQ.
2. After Dark puts your screen to sleep after your computer has been idle for this many minutes. Change the time by typing in a new number in this text entry box.
3. This rectangle is a representation of your actual screen. The + symbol represents the Sleep Now corner. You can put the screen to sleep instantly by moving the mouse into this corner on your actual screen. The - symbol represents the Never Sleep corner. You can prevent After Dark from sleeping by leaving your cursor in the Never Sleep corner of your actual screen.
4. Change the positions of the Sleep Now + and Never Sleep - corners by moving these symbols.
5. Check the Enable sleep corners box to enable the sleep corners feature.
6. Check the Sleep Hot key box to turn on the Hot Key feature. The Hot Key allows you to put After Dark to sleep with the key combination below it.
7. The cmd-ctl-s Hot Key combination will put After Dark to sleep immediately. To change the Hot Key combination, click in the field then press the new key combination.
8. Check the "Show icon at startup" box to make the After Dark icon appear during startup.
9. After Dark will display a "Please Wake Up" message above the display if another program is trying to get your attention. Check the Show "Please Wake Up" box if you want to see the message.
10. Check the "Mute sound" box to prevent After Dark from playing any music or sound.
11. Check this box to turn on SystemIQ, which makes After Dark more sensitive to system activity. (Eg, won't sleep while files are being copied.)
12. With the Wake on mouse movement checkbox selected, moving the mouse will wake up After Dark. (Uncheck this box to prevent the mouse from waking up After Dark.)
13. Click OK to save your changes. Click Cancel to close Setup without saving any changes.

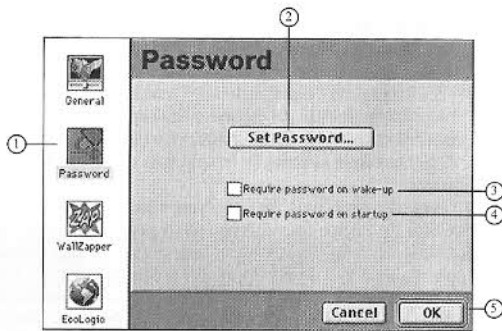


PASSWORD

The Password setup panel controls After Dark's security features. After Dark can protect your system with a password you choose.

When After Dark sleeps with password protection on, you can access your system only if you type in the correct password.

If you forget your password, relax, then check the Troubleshooting section for instructions.

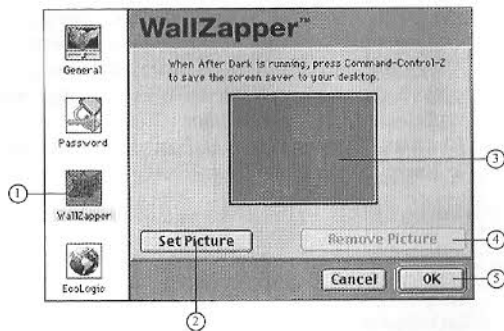


1. Click Password to set After Dark's security features.
2. Click Set Password... to create a new password or change your old one. A series of screens will appear; just follow the on-screen instructions.
3. Check this box to make After Dark always require a password before it wakes up.
4. Check this box to make After Dark require a password every time your computer starts up.
5. Click OK to save your changes or click Cancel to exit without saving.



WALLZAPPER

WallZapper™ enables you to turn your favorite screen saver display into desktop art! Just press Command-Control-Z when After Dark is running. It may take a moment to create the desktop art depending on the speed of your Mac and monitor configuration.



You can also use any PICT file as your desktop art. Simply follow the instructions below.

1. Click the Wallzapper icon to configure WallZapper.
2. Click Set Picture to display any PICT file as your desktop background. A standard file dialog box will appear. Locate the picture you want to use and click Open.
3. This rectangle shows what your monitor will look like with the selected picture. If you have more than one monitor, you can click on each one and select a different picture for each.
4. Click Remove Picture to remove the picture from your monitor.
5. Click OK to save your changes or click Cancel to exit without saving.



ECOLOGIC

EcoLogic™ is After Dark's power manager. EcoLogic reduces your computer's power consumption by powering off your monitor.

After a display runs for the time period that you choose, your screen saver displays a countdown animations to let you know that EcoLogic is about to turn off your energy Star monitor.

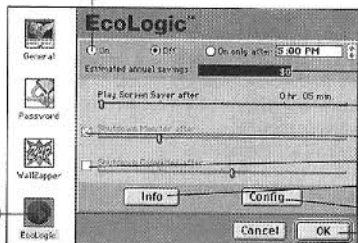
At the end of the countdown, EcoLogic blanks your screen and shuts down your Energy Star monitor. Non-Energy Star monitors go black.

1. Click the EcoLogic icon to access After Dark's energy saving features.
2. You can turn EcoLogic On or Off with those buttons. With EcoLogic turned off, the screen saver will run normally and your monitor will not power off. If you select On only after, EcoLogic will only be active after the time you set in the box. Change the time by clicking the up and down arrows.
3. The Estimated Annual Savings text box displays your estimated annual savings based on EcoLogic's current settings.
4. This slider determines when After Dark will go to sleep (this will change the Sleep Time in the General setup panel).
5. Check this box to shut down your monitor after a period of idle time. Move the slider to

change the amount of time After Dark waits before shutting down your monitor.

6. Check this box to shut down your computer after a period of idle time. Move the slider to change the amount of time After Dark waits before shutting down your computer.

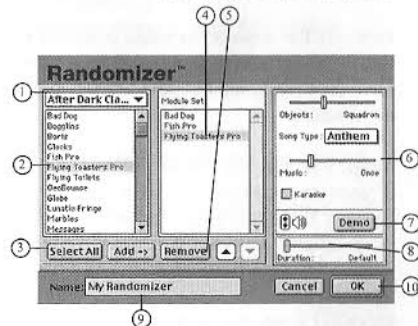
7. Click the info button for information on how EcoLogic calculates your savings.
8. Click the Config button to customize EcoLogic for your system and the electricity costs in your area.
9. Click OK to save your changes or click Cancel to exit without saving.



RANDOMIZER

Can't decide which display to use? With Randomizer you can use all your favorite displays. Just select your favorites and Randomizer will display them in order or randomly. You can also decide how long each display runs.

To create your first Randomizer, select Randomizer from the screen saver pull-down menu, and click the New button.



1. Select a screen saver folder from this pop-up menu. Use this menu to select displays from other screen savers.
2. Double-click the displays you want in your Randomizer or click once and then click "Add →". You can select the same display more than once to make it appear more frequently than others.
3. You can click the Select All button to select all the displays in a screen saver folder. Click the "Add →" button to add them.
4. This list of displays shows you the order in which the displays will appear if you choose in Order from the Randomizer display controls.
5. Click Remove to remove a highlighted display from the list above. The Up and Down buttons will move a display up or down the list. Use them to order the displays however you wish.
6. You can adjust the controls for the currently selected display from the control panel on the right. This does not affect the display's settings outside of this Randomizer.
7. Click Demo to preview the currently selected display. The speaker icon controls sound for the display. However, the speaker icon on the Randomizer display controls the maximum volume for all displays.
8. This slider controls how long each display runs. If Default is selected, the display will run for the default duration chosen in the randomizer controls.
9. Type a unique name for your Randomizer creation. It will appear in the display list whenever you select Randomizer from the screen saver pop-up menu.
10. Click OK to save your changes or click Cancel to exit without saving.



TROUBLESHOOTING

Here are the answers to some common problems. More issues are covered in the Troubleshooting section of your screen saver online manual. If you still have problems, see the next section about contacting our technical support department.

Help! I forgot my password!

If your screen saver asks for a password you don't know, follow these steps. System 7: Restart your Mac while holding down the Shift key; keep Shift pressed until you see "Welcome to Macintosh, Extensions Off," System 6: Restart off a startup floppy disk, such as System Startup.

In either case, the next step is to open the following sequence of folders: the System Folder, then the Preferences folder; then the After Dark Preferences folder. Finally, drag the preferences file to the Trash and restart. Your screen saver will create a new preference file with default settings and no password. To reinstate password protection, you will need to create a new password.

My display (or music) doesn't play - "Out of memory" messages.

Some displays need more memory (RAM) than others, and displays with music need even more. A variety of factors, such as the amount of RAM in your Mac and how much memory is used by applications and system software, determine whether or not a display can run, from the Finder; select "About this Macintosh (or Finder)" from the Apple menu to see memory usage. Here are some things you can try:

- quit unused applications;
- use the display's controls to reduce the complexity;
- use Virtual Memory, if your Mac supports this feature. Note that virtual memory is inherently slow;
- reduce the number of colors your monitor is set to display;
- select a different display temporarily.

I cannot open the After Dark Control Panel, or it says it was not loaded at start-up.

Please make sure the After Dark Control Panel is in the Control Panels folder in the System Folder on the active start-up disk. Make sure the After Dark Control Panel is selected to load within Extensions Manager or within your init controller.



TECHNICAL SUPPORT

For further information, please read the Online Help file. To help us help you, please read these suggestions before you call us.

WHAT'S THE NATURE OF YOUR PROBLEM?

Customer Service: For upgrades, replacement disks, or other non-technical problems, call (425) 644-4343 and ask for Customer Service. Our e-mail address is support@sierra.com.

Technical Support: If you're having technical problems with the software, please be in front of your computer when you call, and try to have as much of the following information as possible about:

The problem - the nature of the problem and what led to it; if you're able to reproduce it; if any other programs are involved; if reinstalling After Dark did not solve the problem; and if any error messages appeared.

Your setup - your versions of After Dark & the system software; your Macintosh model and how much memory (RAM) it has; other Extensions/INITs and Control Panels in your System Folder.

When you call, please ask for MAC Tech Support

U.S. Technical Support
Sierra On-Line Technical Support
Main: (425) 644-4343 • Fax: (415) 644-7697
P.O. Box 85006, Bellevue, WA 98015-8506
Monday - Friday 8:15 a.m. - 4:45 p.m. PST

U.K. Technical Support
Sierra On-Line Limited
Main: (44) 1-734-303-171 • Fax: (44) 1-734-303-362
4 Brewery Court
The Old Brewery
Theale, Reading, Berkshire
RG7 5AJ United Kingdom
Monday - Friday 9:00 a.m. - 5:00 p.m.



ON-LINE SUPPORT

CompuServe: GO SIERRA

Internet USA: <http://www.sierra.com>

America Online: Keyword "Sierra"

Internet United Kingdom: <http://www.sierra-online.co.uk>

Berkeley Systems Support page: <http://www.berksys.com/lite/support/index.html>

COPYRIGHTS & CREDITS

After Dark® Screen Saver Software® 1990-95 Berkeley Systems, Inc. All Rights Reserved. Screen Saver Documentation® 1995 Berkeley Systems, Inc. All Rights Reserved. After Dark, the Flying Toaster logo and the Berkeley Systems logo are trademarks of Berkeley Systems, Flying Toaster, Rod Dog, MultiModule, Ecology, SystemIQ, and WallZapper are trademarks of Berkeley Systems. Macintosh is a registered trademark of Apple Computer, Inc. registered in the U.S. and other countries.

LICENSE AGREEMENT

Berkeley Systems, Inc. grants you a nonexclusive, nontransferable license to use the screen saver (the Program) on one computer. You may install one copy of the Program onto the Hard Disk of one computer, and you may make one copy of the Program disk for backup purposes. These copies must include the After Dark copyright notice.

This Program, including its graphics displays and its related documentation, are copyrighted. You may not rent, disassemble or transfer copies of the Program or documentation to others; modify, reverse engineer, disassemble, decompile, or translate the Program or documentation; make any copies of the individual module(s) for use with programs; or use the Program on more than one terminal of a network, on a multi-user computer, on a time-sharing system, on a service bureau, or on any other system on which the Program could be used by more than one person at a time.

WARRANTY

This license is effective until terminated. You may terminate it at any time by destroying all copies of the Program. It will also terminate automatically if you fail to comply with any of the terms and conditions of this Agreement.

This Agreement constitutes the entire agreement and understanding between the parties and supersedes any prior agreements, representations, or understandings, whether oral or written, relating to the Program.

This Agreement shall be governed by the laws of the State of California.

Berkeley Systems, Inc. warrants that the documentation and the original Program disks are free from physical defects in material and workmanship under normal use for a period of sixty days from the date of purchase. If during this warranty period you discover that either the documentation or the program disks contain a physical defect, return the defective item along with proof of purchase to your retailer and you will receive a replacement at no charge. This is your sole and exclusive remedy for breach.

THE WARRANTY SET FORTH ABOVE IS EXCLUSIVE AND IN LIEU OF ALL OTHERS, ORAL OR WRITTEN, EXPRESS OR IMPLIED, BERKELEY SYSTEMS MAKES NO WARRANTY OR REPRESENTATION, EXPRESS, IMPLIED, OR STATUTORY, WITH RESPECT TO THIS PROGRAM, ITS QUALITY, PERFORMANCE, MERCHANTABILITY, OR FITNESS FOR A PARTICULAR PURPOSE. THIS PROGRAM IS SOLD "AS IS," AND YOU, THE LICENSEE, ARE ASSUMING THE ENTIRE RISK AS TO ITS QUALITY AND PERFORMANCE.

IN NO EVENT SHALL BERKELEY SYSTEMS BE LIABLE FOR DIRECT OR INDIRECT, SPECIAL, INCIDENTAL, OR CONSEQUENTIAL DAMAGES RESULTING FROM THE USE OF THE PROGRAM OR FROM ANY ERROR OR DEFECT IN THE PROGRAM OR ITS DOCUMENTATION. SUCH DAMAGES INCLUDE, BUT ARE NOT LIMITED TO, LOSS OF PROFIT, LOSS OF PROGRAMS OR DATA, AND DAMAGE TO YOUR MONITOR. IN NO EVENT SHALL LIABILITY EXCEED THE PRICE OF THE PROGRAM.

The above exclusions may not apply to you. This warranty provides you with specific legal rights. There may be other rights that you may have which vary from state to state.