

© 1995 Sierra On-Line, Inc. ® and ™ designate trademarks of,
or licensed to Sierra On-Line, Inc. All rights reserved.

SIERRA®

ACTION / ARCADE

S4470220206ZZ English

3-D ULTIMATE PINBALL

WINDOWS 95
and 3.1

FASTEST PINBALL IN SPACE

SIERRA®

ACTION / ARCADE

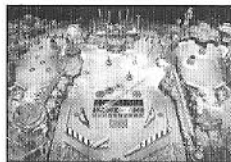
Table of contents

About This Manual	2
Installing and Starting the Game	3
Windows Troubleshooting	6
Customer Service	9
Sierra on CompuServe	10

About This Manual

Welcome to 3-D Ultra Pinball, the most revolutionary, eye-popping pinball game ever created. This booklet tells you how to install and start up Pinball for Windows™ 3.1, Windows 95™, or Macintosh®.

The rest of the Pinball game manual is “on-line”—built into the game. To open the manual from within the game, select On-line Manual from the Help menu.



Installing and Starting the Game

■ MACINTOSH CD INSTALLATION

1. After starting your computer, insert the Pinball CD into the CD-ROM drive.
2. Double-click on the Pinball installer icon.
3. Follow the on-screen instructions.

Starting the Game

1. After starting your computer, insert the Pinball CD into the CD-ROM drive.
2. Double-click on the Pinball game icon.

■ WINDOWS 95 CD INSTALLATION

1. Start Windows 95.
2. Insert the Pinball CD into the CD-ROM drive.
3. When the Pinball setup screen appears, follow the on-screen instructions.

Starting the Game

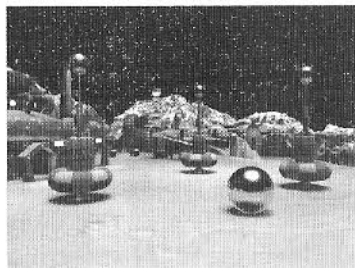
1. Start Windows 95.
2. Insert the Pinball CD into the CD-ROM drive.
3. Select the Start Game option when it appears.

■ WINDOWS 3.1 CD INSTALLATION

1. Start Windows 3.1.
2. Insert the Pinball CD into the CD-ROM drive.
3. From the Program Manager FILE menu, select RUN.
4. In the RUN window, type d:\setup and press [Enter] (assuming d is your CD-ROM drive name).
5. Follow the on-screen instructions.

Starting the Game

1. Start Windows 3.1.
2. Insert the Pinball CD into the CD-ROM drive.
3. Open the Sierra Program Group.
4. Double-click on the Pinball icon to start the game.

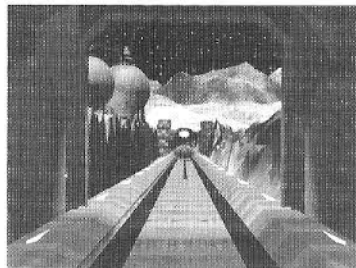


■ ADDITIONAL WINDOWS SETUP HELP

During installation, TEST SYSTEM checks to make sure your computer can run the game correctly.

If you have trouble installing or starting Pinball in Windows 3.1, refer to the following Troubleshooting section. You can find additional game information by double-clicking on the Pinball README file in the Sierra Program Group or folder.

After game installation, the "Setup & Uninstall" program in the Sierra Program Group lets you re-install the game, re-test your computer, uninstall the game, register, or view detailed Support and Setup Help information. To start it, just double-click on the Setup & Uninstall icon.



Windows Troubleshooting

Problem: *I have the required 8 MB of RAM. But when I try to start Pinball in Windows 3.1, I keep getting an "Out of Memory" error message.*

Possible solutions: Try closing all other programs or screen savers before launching Pinball. If that doesn't do it, try making a Boot Disk next. Simply double-click on the Boot Disk Maker in the Sierra Program Group, and follow the on-screen instructions. (NOTE - you will need a blank disk for your A: drive to create a boot disk.) Then restart your computer with the Boot Disk in the A: drive.

If you still do not have enough memory, your boot disk may require further modifications. Try creating your own boot disk manually. For instructions, start the Sierra "Setup and Uninstall" program. Click SUPPORT, then CONTENTS, then scroll down to the "Boot Disk Instructions" section.

Problem: *I have a SCSI drive on my PC and Pinball does not work properly.*

Possible Solution: Do not use SMARTDRV.SYS for Pinball if you have a SCSI drive. You may also need to load your ASPI drivers. For more information on drivers, please consult your SCSI controller and hardware documentation.

Problem: *Pinball does not run on a compressed drive.*

Possible solution: You may need to free up to twice as much hard disk space as the compression software says. Compression software expects to compress files by a ratio of 2 to 1 or more. However, many Pinball files will not compress much.

Problem: *The game's music is missing or distorted.*

Possible Solution: You may be using a non-standard MIDI setup. See the README file for details on correcting your MIDI setup.

■ ERROR MESSAGES

General Protection Fault: Try updating both your Windows Video Driver and your Windows Sound Card drivers. Contact your video card and sound card manufacturer for more information.

Not Enough Memory to Run This Application: Try closing all other programs or screen savers before launching Pinball. If that doesn't do it, try making a Boot Disk.

■ OTHER PROBLEMS

If you have already looked at the Pinball README file, check out the on-line Setup Help. To open this, double-click on the "Setup & Uninstall" program in the Sierra Program Group or folder. Click SUPPORT, and then CONTENTS to find help on your specific system component or problem.

Customer Service

SERVICES	NUMBERS	HOURS AVAILABLE
Customer/ Technical Support	(01734) 303 171	9 a.m. to 5 p.m. Monday - Friday
Customer Service Fax	(01734) 303 362	24 hrs.
Bulletin Board Service	(01734) 304 227	24 hrs Requires a modem.
Hintline (Older Games)	(01734) 304 004	24 hrs. Requires a touch tone phone Automated Service
New Hintline - UK only	0891 660 660*	24 hrs. Available in the UK only. Automated Service

* Costs 39p min. cheap rate, 49p at other times. Max. call length 7.5 mins, max. charge cheap rate £2.93, max. charge at other times £3.68 (UK only).

* Charges correct at time of printing.

For further information, please write to:

SIERRA

Attention: Customer Service, 4 Brewery Court, Theale,
Reading, Berkshire RG7 5AJ - U.K.

Sierra on CompuServe

Sierra offers technical support and patch files on its CompuServe forum, as well as product demos, hints, and reviews. CompuServe members can type GO SIERRA to reach the forum.

IMPLIED WARRANTIES LIMITED: SIERRA MAKES NO WARRANTY, EXPRESS OR IMPLIED, REGARDING THIS PRODUCT. Sierra disclaims any warranty that the software is fit for a particular purpose, AND ANY IMPLIED WARRANTY OF MERCHANTABILITY IS EXPRESSLY AND SPECIFICALLY DISCLAIMED, SOME STATES OR COUNTRIES DO NOT ALLOW LIMITATIONS ON WARRANTY, SO THE ABOVE LIMITATION MAY NOT APPLY TO YOU.

No consequential damages: Sierra shall not be liable for special, incidental, consequential or other damages, even if Sierra is advised of or aware of the possibility of such damages. This means that Sierra shall not be responsible or liable for lost profits or revenues, or for damages or costs incurred as a result of loss of time, data or use of the software, or from any other cause except the actual cost of the product. In no event shall Sierra's liability exceed the purchase price of this product. SOME STATES OR COUNTRIES DO NOT ALLOW THE EXCLUSION OR LIMITATION OF INCIDENTAL OR CONSEQUENTIAL DAMAGES, SO THE ABOVE LIMITATION OR EXCLUSION MAY NOT APPLY TO YOU.

You are entitled to use this product for your own use, but may not sell or transfer reproductions of the software manual or book to other parties in any way, nor rent or lease the product to others. You may use one copy of the product on a single terminal connected to a single computer. You may not network the product or otherwise install it on more than one computer or computer terminal at the same time

.IBM®, PC® are trademarks of International Business Machines Corporation. Microsoft®, MS-DOS®, Windows™, Windows 95™, are trademarks of Microsoft Corporation. Macintosh®, is a registered trademark of Apple Computer, Inc. Sound Ideas is a registered trademark of the Brian Nimens Corporation, Ltd. Other ® and TM designate trademarks of, or licensed to Sierra On-Line, Inc. © Sierra On-Line, Inc. 1995. All rights reserved. Printed in the USA.